



R.D & S.H. National College & S.W.A Science College  
Managed by Hyderabad (Sind) National Collegiate Board Estd. 1949



# THE GAME CHANGING 71 YEARS

PROSPECTUS 2021-2022

# HSNC BOARD MEMBERS



**Mr. Kishu Mansukhani**  
President & Trustee



**Mr. Anil Harish**  
Immediate Past President & Trustee



**Dr. Niranjana Hiranandani**  
Past President & Trustee



**Mr. Lal Chellaram**  
Trustee



**Ms. Maya Shahani**  
Trustee



**Mr. Dinesh Panjwani**  
Secretary

# CONTENTS

1. INSTITUTE'S MISSION, VISION & GOALS
2. FROM THE PRINCIPAL'S DESK
3. PREFACE
4. FACILITIES
5. FACULTY DEGREE COLLEGE
6. ADMINISTRATIVE SECTION
7. PROGRAMS OFFERED
8. INTAKE CAPACITY FOR VARIOUS COURSES
9. ELIGIBILITY CRITERIA
10. CURRICULUM
11. ADMISSION GUIDELINES
12. FEES STRUCTURE A.Y. 2021 2022
13. RULES & REGULATIONS
14. ACADEMIC CALENDAR A.Y. 2021-22 (*will be updated as when received from University of Mumbai*)
15. EXAMINATION RULES UNDER CBSGS
16. FREESHIPS & CONCESSIONS
17. COLLEGE AWARDS AND SCHOLARSHIPS
18. INNOVATIONS
19. ASSOCIATIONS & CLUBS
20. COMMITTEES
21. HOW TO GET???
22. RDNC ... IN THE NEWS
23. MINORITY COLLEGE CIRCULAR
24. HYDERABAD (SIND) NATIONAL COLLEGIATE BOARD, MUMBAI
25. A SNEAK PEAK INTO ACADEMIC YEAR 2020-21

# INSTITUTE'S MISSION, VISION & GOALS

## OUR MISSION

All-round development of the students,  
with an equal emphasis on academics as well as extra and co-curricular activities  
so that they emerge as individuals capable of facing the challenges of life.

## VISION

To be at the front-line of human knowledge and work towards  
the fulfilment of cultural, scientific, intellectual and humane needs of society  
in general and students in particular;  
to enrich and enhance the economic vitality and quality of life,  
while being firmly rooted in the rich Indian ethos and belief.

## GOALS OF THE INSTITUTION

- Academic Excellence
- Realization of inherent creative skills
- Sharpening of leadership skills
- Inculcating the right values
- Sensitization of the problems of the country
- Emphasis on liberal, secular and open-minded education
- Promoting a culture of research and exploration at all levels
- Providing platforms to enhance employability skills through work and earn.
- Creating instruments of team building, catering to diverse strata of society.

# FROM THE PRINCIPAL'S DESK

Dear Students and Parents,

*“Hope can be a powerful force. Maybe there’s no actual magic in it but when you know what you hope for most and hold it like a light within you, you can make things happen... Almost like magic!”*

- Laini Taylor

I welcome you all to the academic year 2021-22 with utmost caution, care, and an abundance of enthusiasm!

You are aspiring to become a member of a prestigious 70 years old institution which was established by Sindhi migrants after being displaced during the partition of India. This prospectus outlines the history of the college, rules and regulations and the academic calendar. It will guide you at every step in fulfilling the various formalities which are to be observed throughout the academic year. Therefore, it is an important document which needs to be preserved. Reading every word of this prospectus carefully will empower you with knowledge about the procedures, rules and regulations, as well as every important facet of this college's campus. A good student is the one who learns by acquainting himself/herself with the procedures, rules and regulations outlined in this prospectus.

It is rightly said that *“Every finishing line is the new starting line. When you reach there, you find there is no there. Life is all about the journey.”* With the changing global scenario and under the threat of this pandemic we need not buckle under, but we shall buckle up all our resources for the process of learning must not stop. In the past year, we have seen a lot of changes in the pedagogical procedures. Online learning has become the buzz word until regular lectures shall commence. We shall make the most of this channel of teaching -learning by providing exposure to students not only to their own teachers but also the best of the faculty from all over the world as online teaching gives us the advantage of connecting with the prestigious educational institutions across the globe.

Dauntless spirit of our students and teachers has been active throughout the lockdown period, spreading hope and help through webinars, online FDPs, online internships, creation of a digital repository of free online content through our Virtual Lab and several extension activities such as Online Yoga training, Awareness about the lockdown and social distancing, relief work at our adopted village in Raigad, counselling on stress and anxiety, to name a few. Our team of teachers and coordinators shall ensure that in addition to all the systems in the college, most co-curricular and extra-curricular activities shall go on virtually without any disturbance.

The college provides every single facility which a student needs for his/her academic, social, physical and moral development. We expect that the students of this college make fullest use of the available facilities. The details of all



the facilities are listed in the prospectus. Some important academic components, which every student of this college should make efforts to be part of, are:

- a) Tutor System and mentor system, which establish a bond of academic exposition among the students and faculty.
- b) House System, N.S.S., Nature Club and Sports which inculcate the values of team spirit, Community service and camp experience. They shape the personality of the students and sensitise them towards the less privileged.
- c) Honour System and Community Awareness and Assessment Survey Project (CAASP) which promote research culture amongst students. The in-house internship programs provide the students with in-house avenues for exposition of theory.
- d) Remedial Coaching: remedial Teaching for different classes which strengthen the linguistic, numerical and composition skills of our students.
- e) Cultural Forums like the Arts Forum, Marathi Vangmay Mandal, Science Association, Commerce Association, Sindhi Sahit Sangat, and similar others which expose the students to the Indian cultural ethos. A strong student-connect which ensures the involvement of our biggest stakeholders.
- f) The Placement Cell works incessantly to help students identify their career goals and provide an insight into the present-day competitive job market. Placement Cell extends from organizing workshops to providing internships to students in various organizations as well as preparing students for the final placements. Further Placement Cell liaison with the Industry to organize In-House and External Placement Drive.

All activities are geared to instil cultural, intellectual and moral responsibilities which help shape the character of every student. Therefore, we seek your participation in all the activities conducted by the college and look forward to a fulfilling and enriching year.

This brings to mind the words of the famous writer, Rudyard Kipling who says that,

*“If you can keep your head when all about you are losing theirs...*

*Yours is the Earth and everything that’s in it.”*

**Dr. Neha Jagtiani**  
I/C Principal

# PREFACE

Rishi Dayaram & Seth Hassaram National College and Seth Wassiamull Assomull Science College, Bandra, Mumbai is one of the oldest institutes of higher education situated in the suburbs of Mumbai. The college was first established in Hyderabad (Sind), now in Pakistan, in the year 1921 with the blessings of Dr. Annie Besant and Rishi Dayaram. After partition, the then Principal of this college, Principal K. M. Kundnani, vowed to re-establish the college in Mumbai.

It is the first college to be established by the Hyderabad Sind National Collegiate Board (HSNCB) in Mumbai, in the year 1949, under the able guidance of the founder Principal of this college, K. M. Kundnani and the founder President of the HSNCB, Barrister H. G. Advani. The history of the college is an inspiration in itself and has been striving to provide best of the facilities and the courses, and has served first generation learners and minority communities for over six decades, imparting value-based community intense education.

The college has classrooms with LCD projectors, sound system, unlimited Wi-Fi, internet connectivity, up-to-date laboratories, a language lab, state of art auditorium, conference rooms, multipurpose indoor sports center, basketball/ volley ball court, girls common room, resource rooms, library and so on. The college regularly upgrades its infrastructure. The courses like BAF, BMS, Masters in English Literature, Psychology, Computer Science, Biotechnology, Information Technology, have been introduced after 2009 and intake capacity of BMM and BMS has been increased to accommodate the increasing demand for these courses. Several short-term courses and in-house internship programs have been introduced to add value to the curriculum. Centers for research have been introduced in the subject of Botany, Physics and Accounts. Many of the faculty members are actively involved in research and have received grants from the UGC and other funding agencies.

The college is permanently affiliated to the University of Mumbai and is recognized by UGC under 2(f) and 12(b) of U.G.C. Act. Working towards its vision and mission statements, the college lays great emphasis on the all-round development of all its students. While academic excellence is encouraged and rewarded, a variety of extra-curricular activities conducted by the institution enable the students to explore their capabilities and is a step towards the holistic development of the students' personality and confidence. Students of both, Junior and Degree College, participate in academic and other activities of the college every year under the guidance of its caring and supportive staff.

The college is aware of its social responsibilities and caters to work in this direction by promoting amongst all students a culture of community service.

Tutor System helps the college in assessing the feedback of the students and the parents. Honors System and

Community Awareness and Assessment Survey Project and linking community and environment initiatives of the college with curriculum based projects promote research culture amongst the students. The In-house Internship programs have created in-house avenues of exposition of theory for the students. Whereas, the In-house consultancy by teachers has helped the college in saving the revenues, which were earlier spend on outsourced academic-administrative operations.

The college strongly believes that one of the most important aspects of higher education is to create an individual who can contribute to national growth through self-learning. Campus Induced Placement Process and Curriculum-Intense Inter-collegiate departmental festivals are some student-intense steps in the direction of self-learning.

The grievances of students are addressed through instruments like the Inward System, Mentor System, Tutor System, etc. A language Lab and English Proficiency courses cater to the needs of first generation learners and students from vernacular medium of school education. The college is a part of large conglomerate of fourteen prime educational institutions in and around Mumbai, as well as, has established networks with neighbouring institutions and other institutions of repute. This helps the college in providing further avenues to its students for exposition of theory.

The students are also exposed to the world outside its curriculum by conduction of Industrial /Institutional Visits, Guest Lectures by eminent personalities and by the introduction of skill-based programs. The college has collaborations with some industries and corporate houses.

Workshops are organized on regular basis to abreast our students and faculties with the latest knowledge and to enhance their employability skills. The progressive management, the enthusiastic faculty and students who are the ambassadors of the college strongly believe in the motto of the college, "PLAY THE GAME", and are working in a direction to take the institution towards accomplishing its mission and vision statements, reflecting the ideology of our founders.

# FACILITIES

## AUDITORIUM



The college has a state of the art, fully air conditioned, duplex auditorium with a seating capacity of 600 that is utilized for various cultural activities, events that promote public speaking and communication skill development, State and National level seminars/workshops. It also has a dedicated Control Room with Light and Sound Mixing Facilities and two Changing Rooms.

## CONFERENCE ROOMS



The college has two air-conditioned Conference Rooms equipped with modern facilities with all the latest state of art audio visual equipments and other e-learning tools.

## SEMINAR ROOM



A fully equipped Seminar Room is located on the 1st floor for any kind of Conference, Seminars and Meetings for the Delegation Visits with the capacity of 30 members.

## MULTI-PURPOSE SPORTS CENTRE



The Sports Centre is equipped with Carom boards, chessboards, TT Tables, digital timers which are available for the students for recreation or for practicing before tournaments.

Yoga mats are available to perform Yoga, the training for which is provided by our own trained college teachers.

The Sports Centre is also equipped with a number of Sports Items like Hockey Kits, Cricket Kits, Basketball Kits, Boxing Gloves, Footballs, Volleyballs, Handballs, Basketballs and Athletic Equipments like Javelin, Discus, Shot Put etc which encourages the students for participation in a number of Outdoor Sports.

The Sports Centre also has a collection of Lezim which promote the Maharashtrian Culture and Folk Dance.

Separate Changing Rooms for Boys and Girls are available in the Sports Centre.

The Gymkhana committee organizes and supervises various sports events.

# FACILITIES

## BASKETBALL COURT



The college has a well-lit Volleyball cum Basketball Court in its premises that cater to a number of outdoor sports.

## CANTEEN



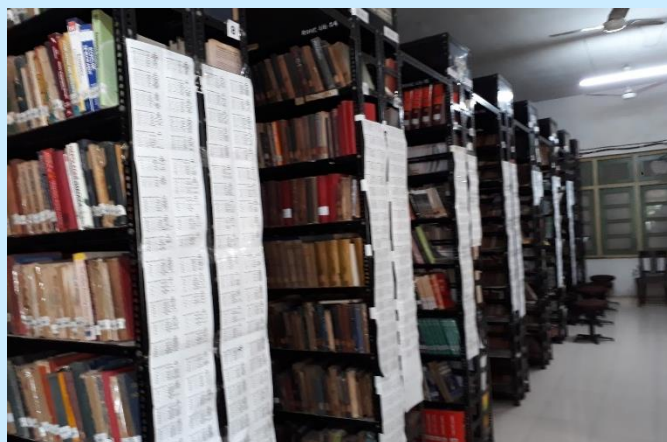
The Canteen is situated on the ground floor of the college building. It remains open during the College hours. Students are advised not to eat the food supplied by hawker stalls outside the college. Only bonafide students with I. D. card and teachers are allowed to use this facility.

## LIBRARY



The college has a well-equipped library with open access system. It has more than 65,000 volumes of books, journals, periodicals, educational CDs, magazines, newspapers. Library has unique collections on Shakespeare, Women Studies, Books on and By Gandhiji,

Books on Bombay. It has a separate reference section with a number of reference books. It also has a separate computer section with free wifi access for staff and students.



- The library has a separate Resource Centre equipped with computers with internet facility which is specially earmarked for research students and staff members.
- Timing: 8:00 am. To 6:00 pm. on all working days.
- Book-bank facilities are available for bonafide students.
- Economically backward but meritorious students are provided 5 sets of book per faculty. Concessions are made for those with consistently good academic performance having proof of economic constraints. Students can retain the books for the entire academic year and have to return them within a week after appearing for their Annual Exam. A fine of Rs. 25/- is charged as late fee.
- The library has a blog for important news, previous years question paper and general information about the college. The blog can be accessed at [rdnclibraryblog2018.blogspot.com](http://rdnclibraryblog2018.blogspot.com)

## THE BOTANICAL GARDEN & HERBARIUM



The college botanical garden housing around 150 species of plants grouped into medicinal, aromatic, fibre yielding,

# FACILITIES

dye yielding, road side shade giving trees, food plants, etc. The Department of Botany initiated the botanical garden as an aid to classroom teaching.

As a corollary to the Botanical garden, the research on the garden has created a departmental Herbarium (RDNCP) as another aid to teaching learning holding around 500 herbarium vouchers specimens and specimens of new plants discovered by the staff and students of the department.

## DR. C.V. RAMAN COMMON FACILITY CENTER AND E-LEARNING LABORATORY



On the occasion of National Science Day, on 28th February, 2020 college has inaugurated this center. Our college is one of the distinguished colleges that has been selected under the Ministry of Science & Technology, Department of Science & Technology, “**Fund for Improvement of S&T Infrastructure in Universities and Higher Educational Institutions (FIST) Program – 2018, PG-0 Level grant with a funding of 90 Lakhs.**

The DST-FIST Scheme provides optimal infrastructural facilities for post-graduate teaching and research, such as, renovation of existing laboratory space (no fresh constructions) modernization of laboratories involved in PG teaching and research, acquisition of essential equipment, up-gradation of existing facilities, networking & computational facilities including software & databases, scientific & technical books (no journals), maintenance & refurbishing of existing and E-learning facilities etc.. The facilities provided under the Program are intended to support the efforts of the Department as a whole or a number of faculty members in the Department. Proposal towards individual R&D support would not be accepted under this Scheme. This **Common Facility Centre (CFC)** as a “**State of the Art Instrumentation facility**” will be available for institutions associated with our management

and nearby areas. The E-learning and computer Laboratory will be available to all students for conducting online examination, virtual Laboratory Demonstrations, Online educational programs for E-learning. Faculty will be encouraged to **form Open Resource Learning and MOOC courses for promotion of online learning. This Facility will provide all infrastructure needs during the current situation of COVID-19 for facilitation of video recording and lecture steaming of teachers as well conducting webinars for students.**

## LANGUAGE LAB



These days instant communication has led to the distortion of language, ignorance of spellings and omission of grammar which has unfortunately crept into formal communication & correspondence. Moreover, correct knowledge of the English language has become a serious requisite for all job profiles. Therefore, to make this challenge an opportunity, the college has set up an English Language Lab which will try to enrich English proficiency.

The college is equipped with a comprehensive Language Lab Software which is one of the finest of its kind. The Language lab plans to conduct short term as well as long term courses in English Proficiency. Focusing intensively on pronunciation and grammar, these courses shall also provide life skills through sessions on email & cell phone etiquettes and gearing up for interviews.

These courses shall be open to students, teaching and non-teaching staff of the college and can teach a learner everything from the accurate pronouncing of an alphabet to structuring resumes.

# FACULTY – DEGREE COLLEGE

## I/C Principal

Dr. Neha Jagtiani

## Vice Principals

Ms. Lakshmi Iyer

Dr. Kiron R. Jathar

Mr. Dinesh Himatsinghani (I/C)

## AIDED COURSES

### Economics

Dr. Ablin J.C. Alphonso (HOD)

### English

Ms. Purna Dewan Jatav (HOD)

Ms. Kranti M. Doibale

### History

Dr. (Ms). Jennifer Rodrigues (HOD)

Dr. Kiran D. Sawant

### Political Science

Dr. Ravi Shukla (HOD)

### Psychology

Dr. Meghna B. Thakur (HOD)

### Hindi

Ms. Anjana Vijan (HOD)

### Accountancy

Dr. Meghna Chotalia (HOD)

Mr. Kayzad Dadachanji

### Commerce

Ms. Lakshmi Iyer (HOD)

Dr. Neha Jagtiani

Mr. Murli Rohra

### Chemistry

Mr. A. S. Shethi Anand (HOD)

Dr. Kiron R. Jathar

Dr. Shashwati V. Pradhan

Dr. Lahu Arjun Ghule

Dr. Nilesh Shivaji Patil

Dr. Dhanaji Jawale

### Physics

Ms. Namrata R. Ajwani (HOD)

Mr. Dinesh Himatsinghani

Dr. Milind Kulkarni

Dr. Laxman Jathar

Ms. Seema Vilas Shinde

### Mathematics

Ms. Anjana Sampat (HOD)

Dr. Rajesh Raut

### Botany

Dr. (Ms). Vibha Mehra (HOD)

Dr. Suchandra Dutta

Dr. Mona Kejriwal

Dr. Vijendra Pratap Singh

## Zoology

Ms. Lata N. Sardesai (HOD)

Dr. Lalana D. Khot

Mr. Manoj Kadam

Mr. Nikhil Disoria

## Librarian

Dr. Roopa Gokahale Shahade

Mr. Himanshu Agrawal (Library Asst.)

## UNAIDED COURSES

### Computer Science

Mr. Vipul Surinder Saluja (Co-ordinator)

Mr. Akbar Khan

Ms. Rachel John

Ms. Farheen Shaikh

### Information Technology

Ms. Manali Jamsandekar

Ms. Manisha Sutar

Mr. Akshay Nimkar

Ms. Jyoti Mirani

Ms. Nayana Chavan

### Bio-Technology

Mr. Chetan Patil (UG Co-ordinator)

Mr. Laukik Shetye (PG Co-ordinator)

Ms Archana Ghugal

Mr. Sahir Q. Mansuri

Dr. Amrita Sherlekar

### B.M.S.

Ms. Nikisha Kukreja (Co-ordinator)

Mr. Vinod Adagale

Ms. Rachana Mehta

Ms. Darshana Kamble

### BCom (A&F)

Mr. Mukesh Kanojia (Co-ordinator)

Ms. Krupa Shah

Mr. Pravin Panigrahi

### BA (MMC)

Ms. Meghna Kothari (Co-ordinator)

Ms. Rumina Rai (Co-ordinator)

Ms. Farha Panthaky

### MA (Psychology)

Ms. Kiran Makhijani (Co-ordinator)

### MA (English Literature)

Ms. Zainab Razvi (Co-ordinator)

### MA (Entertainment, Media & Advertising)

Ms. Meghna Kothari (Co-ordinator)

### M.Sc. (Physics)

Ms. Poonam Jaju

# ADMINISTRATIVE SECTION

|   |   |  |
|---|---|--|
| Administrative Office Incharge                            | Mr. Ganesh Ruke   | 10.00 am to 05.00 pm                         |
|   |   |  |
| Accounts Incharge   | Mr. Mahesh Lulla  | 09.30 am to 05.00 pm                         |
|   |   |  |
| Inward & Enquiry Counter                                  | Mr. Katar Mirchandani   | 09.30 am to 12.30 pm                         |
|   |   |  |
| Cash Counter No 1 & 2                                     | Mr. Nilamkumar Patil  | 09.30 am to 12.30 pm                         |
|   |   |  |
| Degree College Counter No. 3<br>(University related work) | Ms. Sandhya Gawde<br>Mr. Anil Dhawde<br>Mr. Mangesh Angre<br>Mr. Anil Lalge | 09.30 am to 12.30 pm                         |
|   |   |  |
| Junior College Counter No. 5                              | Mr. Arjun Kori<br>Mr. Yogesh Shinde<br>Mr. Shripad Naik                     | 09.30 am to 12.30 pm                         |
|   |   |  |
| Scholarship Counter No. 4                                 | Mr. Arjun Kori  | 02.30 am to 04.00 pm                         |
|   |   |  |
| Railway Concession Counter No. 6                          | Mr. Sandeep Singh   | 09.30 am to 12.30 pm<br>02.30 am to 04.00 pm |
|   |   |  |
| Accounts Department                                       | Mr. Vinod Tekwani<br>Mr. Shantilal Kanojiya<br>Mr. Vilas Bendal             |  |
|   |   |  |
| Admin Department  | Ms. Sonam Gogia<br>Mr. M.L. D'Souza<br>Mr. Rajesh Khadye                    |  |

# PROGRAMS OFFERED

## UNDER GRADUATE

|   |   |
|---|---|
| <b>Bachelor of Arts</b>                                     | <ul style="list-style-type: none"> <li>• Economics (6 courses)</li> <li>• English (6 courses)</li> <li>• History (6 courses)</li> <li>• Psychology (6 courses)</li> </ul> |
|   |   |
| <b>Bachelor of Arts (Multimedia and Mass Communication)</b> | <ul style="list-style-type: none"> <li>• Advertising</li> <li>• Journalism</li> </ul>   |
|   |   |
| <b>Bachelor of Commerce</b>                                 | <ul style="list-style-type: none"> <li>• Business Management</li> <li>• Advanced Accountancy</li> </ul>   |
|   |   |
| <b>Bachelor of Commerce (Accounting &amp; Finance)</b>      | <ul style="list-style-type: none"> <li>• B.Com (A&amp; F)</li> </ul>  |
|   |   |
| <b>Bachelor of Management Studies</b>                       | <ul style="list-style-type: none"> <li>• Finance</li> <li>• Marketing</li> </ul>  |
|   |   |
| <b>Bachelor of Science</b>                                  | <ul style="list-style-type: none"> <li>• Chemistry (6 courses)</li> <li>• Physics (6 courses)</li> </ul>  |
|   |   |
| <b>Bachelor of Science (Biotechnology)</b>                  | <ul style="list-style-type: none"> <li>• B.Sc. (BT)</li> </ul>  |
|   |   |
| <b>Bachelor of Science (Computer Science)</b>               | <ul style="list-style-type: none"> <li>• B.Sc. (CS)</li> </ul>  |
|   |   |
| <b>Bachelor of Science (Informtion Technology)</b>          | <ul style="list-style-type: none"> <li>• B.Sc. (IT)</li> </ul>  |

## POST GRADUATE

|                                   |   |
|-----------------------------------|---|
| <b>Masters of Science (M.Sc.)</b> | <ul style="list-style-type: none"> <li>• Chemistry (by papers) <ul style="list-style-type: none"> <li>○ Organic</li> <li>○ Inorganic</li> <li>○ Analytical</li> </ul> </li> <li>• Chemistry (by research) <ul style="list-style-type: none"> <li>○ Organic</li> <li>○ Inorganic</li> </ul> </li> <li>• Computer Science (by papers)</li> <li>• Physics (by papers) <ul style="list-style-type: none"> <li>○ Electronics</li> </ul> </li> <li>• Biotechnology (by papers)</li> <li>• Information Technology (by papers)</li> </ul> |
|                                   |   |
| <b>Masters of Arts (M.A.)</b>     | <ul style="list-style-type: none"> <li>• Psychology</li> <li>• English Literature</li> <li>• Entertainment, Media &amp; Advertising</li> </ul>  |
|                                   |   |
| <b>Ph.D.</b>                      | <ul style="list-style-type: none"> <li>• Organic Chemistry</li> <li>• Botany</li> </ul>   |

# INTAKE CAPACITY FOR VARIOUS COURSES

## UNDER GRADUATE COURSES

| Sr. No. | Course                 | Intake Capacity |         |          |
|---------|------------------------|-----------------|---------|----------|
|         |                        | I Year          | II Year | III Year |
| 1.      | Arts                   | 240             | 240     | 240      |
| 2.      | Commerce               | 240             | 240     | 240      |
| 3.      | Science                | 240             | 240     | 240      |
| 4.      | Information Technology | 60              | 60      | 60       |
| 5.      | Biotechnology          | 35              | 35      | 35       |
| 6.      | Computer Science       | 60              | 60      | 60       |
| 7.      | B.M.M. / B.A.(M.M.C.)  | 120             | 120     | 120      |
| 8.      | B.A.F.                 | 60              | 60      | 60       |
| 9.      | B.M.S.                 | 120             | 120     | 120      |

## POST GRADUATE COURSES

| Sr. No. | Course  | Intake Capacity |                |
|---------|---|-----------------|----------------|
|         |   | I Year          | II Year        |
| 1.      | M.Sc. (Physics)   | 10              | 10             |
| 2.      | M.Sc. (Chemistry)<br>Organic<br>Inorganic<br>Analytical | 05<br>02<br>03  | 05<br>02<br>03 |
| 3.      | M.Sc. (Chemistry) By Research + (Ph.D. Chemistry)       | 05              | 05             |
| 4.      | M.Sc. (Computer Science)                                | 20              | 20             |
| 5.      | M.Sc. (Biotechnology)                                   | 20              | 20             |
| 6.      | M.Sc. (I.T.)  | 20              | 20             |
| 7.      | M.A. (English Literature)                               | 60              | 60             |
| 8.      | M.A. (Psychology)                                       | 60              | 60             |
| 9.      | M.A. (Media, Entertainment & Advertising)               | 60              | 60             |
| 10.     | Ph.D. (Botany)  | 08              | 08             |

# ELIGIBILITY CRITERIA

## UNDER GRADUATE PROGRAMMES

### BACHELOR OF ARTS (B.A.)

**Ordinance No: O.2138**

**Circular No: No.UG/105 of 2004, Dated 15<sup>th</sup> March, 2004**

A candidate for being eligible for admission to the three year integrated course leading to the degree of Bachelor of Arts must have passed the Higher Secondary School Certificate (Std. XII) examination conducted by the different Divisional Boards of the Maharashtra State Board of Secondary and Higher Secondary Education with the following subjects :-

1. English
2. Any one of the Modern Indian Languages or Modern Foreign Languages or any classical Language or Information Technology.
3. Any four subjects carrying 100 marks each.

**OR**

Must have passed the Higher Secondary School Certificate (Std. XII) examination with vocational subject conducted by the different Divisional Boards of the Maharashtra State Board of Secondary and Higher Secondary Education with the following subjects:-

1. English
2. Any one vocational subject carrying 200 marks prescribed by the Board from time to time.
3. Any three subjects carrying 100 marks each.

**OR**

Must have passed the Higher Secondary School Certificate (Std. XII) examination with the Minimum Competency based vocational courses conducted by the different Divisional Boards of the Maharashtra State Board of Secondary and Higher Secondary Education with the following subjects :-

1. English
2. Any one of the Modern Indian Languages or Modern Foreign Languages or Classical Language or Information Technology
3. General Foundation Course.
4. Any one subject carrying 300 marks from among the Minimum Competency based vocational courses prescribed by the Higher Secondary School Certificate examination from time to time.

**OR**

Must have passed an examination of another University or Body Recognized as equivalent thereto.

### BACHELOR OF ARTS in MULTIMEDIA AND MASS COMMUNICATION (B.A. – MMC)

**Ordinance NO: O 5206**

**Circular NO: No.UG/279 of 2007, Dated 16<sup>th</sup> June, 2007**

A candidate for being eligible for admission to the degree course in BA (MMC) shall have passed XIIth Std. Examination of Maharashtra Board of Higher Secondary

Education or its equivalent from the Science, Arts or Commerce Stream.

No college shall conduct any entrance test in any form and the admissions are purely based on merit duly following the reservation policy as per the norms of Government of Maharashtra. While drawing the merit list, weightage has to be given to students from Arts, Commerce and Science Stream at 12<sup>th</sup> Standard level. The stream wise weightage to be given is as under:

| Stream     | Arts | Commerce | Science |
|------------|------|----------|---------|
| Percentage | 50%  | 25%      | 25%     |

The applications are to be accepted and processed by the colleges stream wise separately and the merit list is to be displayed stream wise taking into account the reservation policy prescribed by Government of Maharashtra.

- a) The merit list is to be prepared and displayed stream wise.
- b) In case if no application is received from any stream, the vacant seats are to be distributed equally between the two streams only.
- c) After the first merit list is displayed, if any seat allotted to one stream remains vacant, the same shall be distributed equally between the remaining two streams. In case of vacancy in one stream is of single/odd number of seats, the single seat is to be allotted to the Arts Stream. In case if no application is available from the two streams, then all the vacant seats of such two streams must be transferred to the third stream.

Step c) be repeated for the subsequent merit lists till all the forms are exhausted or the final merit list is displayed, whichever is earlier.

### BACHELOR OF COMMERCE (B.Com.)

**Ordinance No: 0.2152**

**Circular No: No.UG/142 of 2010, Dated 1<sup>st</sup> July, 2010**

A candidate for being eligible for admission to the three year degree course leading to the Bachelor of Commerce must have passed the Higher Secondary School Certificate (Std. XII) examination conducted by the different Divisional Boards of the Maharashtra State Board of Secondary and Higher Secondary Education.

**OR**

Must have passed the Higher Secondary School Certificate (Std. XII) examination with vocational subjects/minimum competency based vocational course conducted by the different Divisional Boards of the Maharashtra State Board of Secondary and Higher Secondary Education.

**OR**

Must have passed an examination of another University or Body recognized as equivalent to Higher Secondary School Certificate (Std. XII) Examination.

# ELIGIBILITY CRITERIA

## BACHELOR OF COMMERCE (ACCOUNTING & FINANCE) (B.Com – A&F)

**Ordinance No: O.5204**

**Circular No: No.UG/395 of 2004, Dated 7<sup>th</sup> Sept, 2004**

- A candidate for being eligible for admission to the Bachelor of Commerce (Accounting and Finance) degree course shall have passed XII std. Examination of the Maharashtra Board of Higher Secondary Education or its equivalent and secured not less than 45% marks in aggregate at first attempt (40% in case of reserved category).
- Every candidate admitted to the degree course in the constituent / affiliated college/recognized institution, conducting the course, shall have to register himself/herself with the University.

## BACHELOR OF MANAGEMENT STUDIES (B.M.S.)

**Ordinance No: O. 3941**

**Circular No: No.UG/80 of 2010, Dated 27<sup>th</sup> April, 2010**

Maharashtra Board of Higher Secondary Education or its equivalent examination or Diploma in any Engineering branches with two years or three years duration after S.S.C. conducted by the Board of Technical Education, Maharashtra State or its equivalent examination by securing minimum 45% marks for general category (in one attempt) at the respective Examination and minimum 40% marks for the reserved category (in one attempt).

No college shall conduct any entrance test in any form and the admissions are purely based on merit duly following the reservation policy as per the norms of Government of Maharashtra. While drawing the merit list, weightage has to be given to students from Arts, Commerce and Science Stream at 12<sup>th</sup> standard level. The stream wise weightage to be given is as under:

| Stream     | Commerce | Arts | Science | Diploma |
|------------|----------|------|---------|---------|
| Percentage | 45%      | 25%  | 25%     | 5%      |

The applications are to be accepted and processed by the colleges stream wise separately and the merit list is to be displayed stream wise taking into account the reservation policy prescribed by the Government of Maharashtra.

- The merit list is to be prepared and displayed stream wise.
- In case if no applications are received under the “Diploma in Engineering and other Category” or if the seats remain vacant in “Diploma in Engineering and other Category” after all the merit lists/forms are exhausted, the vacant seats must be transferred to Commerce Stream.
- In case if no application is received from any stream the vacant seats are to be distributed equally between the remaining two streams only.
- After the first merit list is displayed, if any seat allotted to one stream remains vacant, the same shall be distributed

equally between the remaining two streams. In case of vacancy in ones tream is of single/odd number of seats, the single seat is to be allotted to the Commerce Stream. In case if no applications are available from the two streams, then all the vacant seats of such two streams must be transferred to the third stream.

- Step d) be repeated for the subsequent merit lists till all the forms are exhausted or the final merit list is displayed, whichever is earlier.

## BACHELOR OF SCIENCE (B.Sc.)

**Ordinance No: O.2145**

**Circular No: No.UG/394 of 2004 , Dated 6<sup>th</sup> Sept, 2004**

### **Minimum Admission Requirements:**

A candidate for being eligible for admission to the three year integrated course leading to the degree of Bachelor of Science (B.Sc.) must have passed the Higher Secondary School Certificate examination (Std. XII) conducted by the Maharashtra State Board of Secondary and Higher Secondary Education, Pune, in the following subjects:

#### **A) Science Stream (General)**

| Subject No. | Subject Title  |
|-------------|--|
| 01          | English (Higher or Lower Level) 100 marks  |
| 02          | Any one of the Modern Indian Languages OR Modern Foreign Languages OR any Classical Language (Higher Level OR Lower Level) OR Information Technology   |
| 03 to 06    | Four other subjects from among the subjects mentioned below carrying a total of 400 marks<br><b>OR</b><br>Three other subjects from among the subjects mentioned below carrying a total of 300 marks and one more subject from among the remaining optional subjects carrying 100 marks as prescribed for the HSC<br>List of subjects (03 to 06)<br>i. Physics<br>ii. Chemistry<br>iii. Biology<br>iv. Mathematics and Statistics<br>v. Geography<br>vi. Economics<br>vii. Geology<br>viii. Psychology |

#### **OR**

- B) Vocational Stream:** Must have pass the Higher Secondary School certificate (HSC) (Std.XII) examination with vocational subjects conducted by the Maharashtra State Board of Secondary and Higher Secondary Education, Pune, in the following subjects:

# ELIGIBILITY CRITERIA

| Subject No. | Subject Title  |
|-------------|--|
| 01          | English (Higher or Lower Level) 100 marks  |
| 02 to 03    | Any One vocational subject carrying 200 marks (from among 19 subjects) prescribed for the HSC (Std.XII) examination under the Technical Group Commercial Group Agriculture Group Catering & Food Technology Group and Fisheries Group) |
| 04 to 06    | Any three of the following subjects carrying a total of 300 marks:<br>i. Physics<br>ii. Chemistry<br>iii. Biology<br>iv. Mathematics and Statistics  |

**OR**

**C) MCVC Stream:** Must have passed the Higher Secondary Vocational Subjects School Certificate (HSC) (Std. XII) Examination Certificate (HSC)(Std. XII) examination with conducted by the Maharashtra State Board of Secondary and Higher Secondary Education Pune, in the following subjects:

| Subject No. | Subject Title   |
|-------------|---|
| 01          | English (Higher or Lower Level) (100 marks)   |
| 02          | Any one of the Modern Indian ( 100 marks) Languages OR Modern Foreign Languages OR any Classical Language (Higher or Lower Level) OR Information Technology.  |
| 03          | General Foundation course (100 marks)   |
| 04          | Any three of the minimum competency to vocational subjects carrying total of 300 marks 06 [from among the following groups prescribed for the HSC (Std. XII) examination namely Engineering & Technology Group Agriculture Group Fisheries Group Para Medical Group and Catering & Food Technology Group] |

Further that the students, passing the HSC (Std.XII) examination with the MCVC stream shall be eligible for admission to F.Y.B.Sc. for certain subject combinations only depending on their subjects (04 to 06) of the MCVC stream as specified in the following table:

| Sr. No | MCVP Group             | Any three of the following subjects to be offered at F.Y.B.Sc.  |
|--------|------------------------|---|
| 01.    | Engineering Technology | Physics, Chemistry, Group Mathematics, Statistics, Geology, Geography, Computer Science, Information Technology |
| 02.    | Agriculture Group      | Chemistry, Botany, Zoology, Life Sciences, Biochemistry, Bio-Technology, Microbiology, Geography, Geology       |

|     |                   |  |
|-----|-------------------|--|
| 03. | Fisheries Group   | Chemistry, Botany, Zoology , Life Sciences Biochemistry, Bio-Technology, Microbiology, Geography, Geology                      |
| 04. | Paramedical Group | Chemistry, Botany, Zoology, Life Sciences, Biochemistry, Bio-Technology, Microbiology, Geography, Geology                      |
| 05. | Catering & Food   | Chemistry, Botany, Technology, Zoology, Life Sciences, Biochemistry, Bio-Technology, Microbiology, Geography, Geology, Economy |

Students of this MCVC Group shall also be eligible for admission to the F.Y. B.Sc. of B.Sc. (Home Science) Degree course.

**OR**

**D)** Must have passed an examination of another University OR Body or Board recognized as equivalent to the HSC (Std. XII) Examination conducted by the Maharashtra Secondary and Higher Secondary Education, Pune,

**OR**

**E)** Must have passed the First Year Science Examination of the Year B.Sc. degree Course of this University or an Examination of any other University recognized as equivalent Thereto

**OR**

**F)** Must have passed at list the Second Year Examination of the Post S.S.C. (Std. X) Three Year Engineering Diploma course or the 4th Semester of 6th Semester Engineering Diploma Course conducted by approved by recognized by affiliated to the Maharashtra Board of Technical Education or another Body Board recognized as equivalent thereto. Further, that such students of Engineering Diploma courses shall be eligible to offer any three of the following subjects for admission to the F.Y. B.Sc.: Physics, Chemistry, Mathematics, Statistics, Computer Science, Information Technology, Geology, Geography, Economics.

## **BACHELOR OF SCIENCE (BIO-TECHNOLOGY)** **(B.Sc. – BT)**

**Ordinance No: O.5108**

**Circular No: No.UG/282 of 2007, Dated 16th June, 2007 & No.UG/294 of 2009, Dated 28th July, 2009**

A candidate for being eligible for admission to the Three year Integrated course leading to the degree of Bachelor of Science (B.Sc.) must have passed Higher Secondary School Certificate Examination (Std.XII) in Science conducted by the Maharashtra State Board of Secondary and Higher Secondary Education or its equivalent in Science stream. Admission will be on merit, based on order of preference as follows: Aggregate Marks at H.S.C. or equivalent, Aggregate Marks in

# ELIGIBILITY CRITERIA

Science Group (Physics, Chemistry and Biology), Marks in Biology and Chemistry, Marks in Biology.

A candidate who has not offered Mathematics and Statistics as one of the Subject at H.S.C. (Std.XII) shall have to satisfactorily complete a course on Mathematics and Statistics (of 15 hours duration) during the academic year of First year B.Sc. in which he is admitted.

## **BACHELOR OF SCIENCE (COMPUTER SCIENCE)** **(B.Sc. – CS)**

**Ordinance No: O.5719**

**Circular No: No.UG./284 of 2007, Dated 16<sup>th</sup> June, 2007**

A candidate for being eligible for admission to the three years integrated course leading to the degree of Bachelor of Science (B.Sc.) in Computer Science must have passed Higher Secondary School Certificate Examination (Std. XII) in Science stream conducted by the Maharashtra State Board of Secondary and Higher Secondary Education with Mathematics and Statistics as one of the subject or its equivalent. Admission will be on merit, based on order of preference as follows:

1. Aggregate Marks at H.S.C. or equivalent.
2. Aggregate Marks in Science Group (Physics, Chemistry and Mathematics)
3. Marks in Mathematics and Statistics and Physics. Marks in Mathematics and Statistics.

## **BACHELOR OF SCIENCE (INFORMATION TECHNOLOGY) (B.Sc. – I.T.)**

**Ordinance No: O.5051**

**Circular No: No.UG./283 of 2007, Dated 16<sup>th</sup> June, 2007**

- (a) A candidate for being eligible for admission to the degree course of Bachelor of Science-Information Technology, shall have passed XII standard examination of the Maharashtra Board of Higher Secondary Education or it's equivalent with Mathematics and Statistics as one of the subject and should have secured not less than 45% marks in aggregate for open category and 40% marks in aggregate in case of Reserved category candidates.
- (b) Candidate who have passed Diploma (Three years after S.S.C. – Xth Std.) in Information Technology/ Computer Technology/ Computer Engineering/Computer Science/ Electrical, Electronics and Video Engineering and Allied Branches/Mechanical and Allied Branches/ Civil and Allied branches are eligible for direct admission to the Second Year of the B.Sc. (I.T.) degree course. –

However, the Diploma should be recognized by the Board of Technical Education or any other recognized Government Body. Minimum marks required 45% aggregate for open category candidates and 40% aggregate for reserved category candidates.

Candidates with post HSC-Diploma in Information Technology/Computer Technology/ Computer Engineering/ Computer Science/ and Allied branches will be eligible for direct admission to the Second Year of B.Sc. (I.T.).

However, the Diploma should be recognized by the Board of Technical Education or any other recognized Government Body Minimum Marks required 45% aggregate for open category candidates and 40% aggregate for reserved category candidates.

## **POST GRADUATE PROGRAMMES**

### **MASTER OF ARTS (M.A.)**

**Ordinance No: O.2237**

**Circular No: UG/Gen/104 of 1989**

A candidate for being eligible for admission to the course leading to the degree of Master of Arts must have passed the examination for the degree of Bachelor of Arts (three year integrated course) of this University or the degree of Bachelor of Arts (Old that is four year course) of this University or a degree of another University recognized as equivalent thereto. Provided, however, that applications of graduates of this University in the faculties other than the faculty of Arts, or those who have passed the equivalent examination of another recognized University seeking admission to the M.A. degree course by papers, will be considered by the Academic Council on the merits of each individual case on the recommendation of the Head of the University Department concerned/Chairman of the Board of Studies concerned in the subject in which there is no University Department/Principal of a college where the Post-Graduate Centre is granted, and in the case of a student seeking admission to the course by research, on the recommendation of the Chairmen of the Committee of recognized Teachers in the subject concerned before recommending such applications, the following procedure shall be followed:-

A written test consisting of 2 papers as under shall be administered in the subject in which the student desires to register for his M.A. degree.

- i. An essay paper in the subject,
- ii. A paper to test the student's general acquaintance with the subject

The change of Faculty Test required to be given by the students has been waived in case of students who desire to register with the Directorate of Distance Education.

N.B.: Candidates shall be given a list of books for period reading before they are examined.

**OR**

# ELIGIBILITY CRITERIA

## MASTER OF ARTS PROGRAMME IN ENTERTAINMENT, MEDIA AND ADVERTISING (M.A. – EMA)

Ordinance No: O.6081

Circular No: UG/89 of 2013-14 Date 30<sup>th</sup> Dec., 2013

Students who have passed a bachelor's course from any discipline/ faculty of a recognized (by UGC-DE Council or any other competent body appointed for the said purpose by the due authority) university in India, or the degree from any foreign university, which has been approved by UGC/Association of Indian Universities and is considered equivalent and at par with Indian Degrees. In case of more applications are received than the sanctioned strength then Merit-With entrance test will be the criteria for selection. Reservations as per University rules will be applicable.

## MASTER OF SCIENCE (M. Sc.)

Circular No: UG/89 of 2013-14 Date 30<sup>th</sup> Dec., 2013 dated 19<sup>th</sup> May, 2012

A learner for being eligible to apply for admission to the M.Sc. degree course by papers in the branches other than those of Molecular Biology, Computer Science, Biochemistry, Biophysics, Fisheries management, Life Sciences, Information Technology, Applied and Industrial Chemistry, Biotechnology, M.Sc. (Home Science), M.Sc. (Home Science) in Food Processing and Preservation, M.Sc. (Home Science) in Sports and Nutrition, Five year integrated M. Sc. course in Basic Sciences, Bioanalytical Sciences, Herbal Sciences, Bioanalytical instrumentation, Bioinformatics, Nanoscience and NanoTechnology, Environmental Sciences, Nutraceuticals and Five Year Integrated Course in Bioanalytical Sciences must have passed:

The B.Sc. degree examination of this university or degree of any other university recognized as equivalent thereto with minimum 46 credits or its equivalent (i.e, the minimum credits required for majoring in a subject and excluding the credits for optional courses) of the subject which he wants to offer for the M.Sc. degree course by papers.

The admission shall be strictly on merit for the seats allotted by the University.

However, where the seats are allotted by the college, the Head of the institution shall have discretionary powers for admission under "College seats" which shall not exceed 30% of the total allotted quota. Without prejudice the same shall be applicable unless prescribed by the University Rules or otherwise.

However a learner who has passed the B.Sc. degree of this University or of another University recognized as equivalent thereto with the following combinations of subjects will be eligible for admission to the M.Sc. degree course by papers in

the branches as listed below:

### **COMPUTER SCIENCE**

A learner who has either passed Bachelor's Degree Examination of University of Mumbai in Science or equivalent degree of any other university recognized as equivalent thereto with one of the following as major subject

| MAJOR       | ANCILIARY   |
|-------------|-------------|
| Mathematics | -----       |
| <b>OR</b>   |             |
| Physics     | Mathematics |
| <b>OR</b>   |             |
| Statistics  | Mathematics |

**OR**

The Bachelor of Engineering (B.E.) degree examination

**OR**

The B.Sc. (Computer Science) / BCS / B.Sc. (I.T.) Degree Examination

### **INFORMATION TECHNOLOGY**

A learner who has either passed B.Sc. Degree in Information Technology of University of Mumbai or any other recognized University with minimum 45 percent of marks.

**OR**

B.Sc. in Computer Science / BCS with minimum 45 percent marks.

**OR**

B.E. Degree in any branch with 45 percent marks

**OR**

B.Sc. (Mathematics) with minimum 45 percent marks

**OR**

B.Sc. (Physics) with minimum 45 percent marks

**OR**

B.Sc. (Statistics) with minimum 45 percent marks

**OR**

B.Sc. (Electronics) with minimum 45 percent marks

With Mathematics as one of the subjects at 10 + 02 or its equivalent examination. Further, 15 percent of the seats out of the sanctioned capacity is to be utilized for the above said admissions.

### **BIOTECHNOLOGY**

A learner being eligible for admission to the M.Sc. degree course in Biotechnology must have passed:

a) The B.Sc. (Three Year integrated course) degree examination of this University or any other University recognized as equivalent thereto) with the major subject Biotechnology.

**OR**

b) With three units in Biotechnology at T.Y.B.Sc. in combination with three units of any other major subject at the T.Y.B.Sc.

The learners will be admitted to the M.Sc. degree course in Biotechnology on the basis of the marks obtained at the T.Y.B.Sc. Examination.

# CURRICULUM

## B.Sc. (Computer Science)

| Semester I  | Semester III   | Semester V   |
|---|--|--|
| <ul style="list-style-type: none"> <li>• Computer Organisation &amp; Design</li> <li>• Program with Python – I</li> <li>• Free &amp; Open Source Software</li> <li>• Database Systems</li> <li>• Discrete Mathematics</li> <li>• Descriptive Statistics &amp; Introduction to Probability</li> <li>• Soft Skills Development</li> </ul> | <ul style="list-style-type: none"> <li>• Theory of Computation</li> <li>• Core Java</li> <li>• Operating System</li> <li>• Database Management System</li> <li>• Combinations &amp; Graph theory</li> <li>• Physical Computing &amp; IoT Programming</li> <li>• Web Programming</li> </ul> | <ul style="list-style-type: none"> <li>• <b><u>Elective-I (Any Two)</u></b><br/>Artificial Intelligence<br/>Linux Server Administration<br/>Software Testing and Quality Assurance</li> <li>• <b><u>Elective-II (Any Two)</u></b><br/>Information and Network Security<br/>Architecting of IoT<br/>Web Services</li> <li>• Game Programming</li> <li>• Project Implementation</li> </ul> |
| Semester II   | Semester IV  | Semester VI  |
| <ul style="list-style-type: none"> <li>• Programming with C</li> <li>• Programming with Python – II</li> <li>• Linux</li> <li>• Data Structure</li> <li>• Calculus</li> <li>• Statistical Methods &amp; Testing of Hypothesis</li> <li>• Green Technologies</li> </ul>  | <ul style="list-style-type: none"> <li>• Fundamentals of Algorithms</li> <li>• Advanced Java</li> <li>• Software Engineering</li> <li>• Computer Networks</li> <li>• Linear Algebra Using Python</li> <li>• Net Technologies</li> <li>• Android development Fundamentals</li> </ul>        | <ul style="list-style-type: none"> <li>• <b><u>Elective-I (Any Two)</u></b><br/>Wireless Sensor Networks &amp; MC<br/>Cloud Computing<br/>Cyber Forensics</li> <li>• <b><u>Elective-II (Any Two)</u></b><br/>Information Retrieval<br/>Digital Image Processing<br/>Data Science</li> <li>• Ethical Hacking</li> <li>• Project Implementation</li> </ul>                                 |

## B.Sc. (Information Technology)

| Semester I  | Semester III   | Semester V   |
|---|--|--|
| <ul style="list-style-type: none"> <li>• Imperative Programming</li> <li>• Digital Electronics</li> <li>• Operating System</li> <li>• Discrete Mathematics</li> <li>• Communication Skills</li> </ul>                       | <ul style="list-style-type: none"> <li>• Python Programming</li> <li>• Data Structures</li> <li>• Computer Networks</li> <li>• Database Management Systems</li> <li>• Applied Mathematics</li> </ul>                                       | <ul style="list-style-type: none"> <li>• Software Project Management</li> <li>• Internet of Things</li> <li>• Advanced Web Programming</li> <li>• Artificial Intelligence</li> <li>• Enterprise Java</li> <li>• Project Dissertation</li> </ul>                  |
| Semester II   | Semester IV  | Semester VI  |
| <ul style="list-style-type: none"> <li>• Object Oriented Programming</li> <li>• Microprocessor Architecture</li> <li>• Web Programming</li> <li>• Numerical &amp; Statistical Methods</li> <li>• Green Computing</li> </ul> | <ul style="list-style-type: none"> <li>• Core Java</li> <li>• Introduction to Embedded Systems</li> <li>• Computer Oriented Statistical Techniques</li> <li>• Software Engineering</li> <li>• Computer Graphics &amp; Animation</li> </ul> | <ul style="list-style-type: none"> <li>• Software Quality Assurance</li> <li>• Security in Computing</li> <li>• Business Intelligence</li> <li>• Principles of Geographic Information Systems</li> <li>• Cyber Laws</li> <li>• Project Implementation</li> </ul> |

## B.Sc. (Biotechnology)

| Semester I  | Semester III   | Semester V   |
|---|--|--|
| <ul style="list-style-type: none"> <li>• Basic Chemistry – I</li> <li>• Basic Chemistry – II</li> <li>• Basic Life Science – I</li> <li>• Basic Life Science – II</li> <li>• Biotechnology – I</li> <li>• Biotechnology – II</li> </ul> | <ul style="list-style-type: none"> <li>• Biophysics</li> <li>• Applied Chemistry –I</li> <li>• Immunology</li> <li>• Cell Biology and Cytogenetics</li> <li>• Molecular Biology</li> <li>• Bioprocess Technology</li> <li>• Research Methodology</li> </ul>                                    | <ul style="list-style-type: none"> <li>• Cell Biology</li> <li>• Medical Microbiology and Instrumentation</li> <li>• Genomes and Molecular Biology</li> <li>• Marine Biotechnology</li> <li>• Biosafety (Applied Component)</li> </ul> |
| Semester II   | Semester IV  | Semester VI  |
| <ul style="list-style-type: none"> <li>• Chemistry – I</li> <li>• Chemistry – II</li> <li>• Basic Life Science – I</li> <li>• Basic Life Science – II</li> <li>• Biotechnology – I</li> <li>• Biotechnology – II</li> </ul>             | <ul style="list-style-type: none"> <li>• Biochemistry</li> <li>• Applied Chemistry – II</li> <li>• Medical Microbiology</li> <li>• Environmental Biotechnology</li> <li>• Biostatistics and Bioinformatics</li> <li>• Molecular Diagnostics</li> <li>• Entrepreneurship Development</li> </ul> | <ul style="list-style-type: none"> <li>• Biochemistry</li> <li>• Industrial Microbiology</li> <li>• Pharmacology and Neurochemistry</li> <li>• Environmental Biotechnology</li> <li>• Agribiotechnology (Applied Component)</li> </ul> |

# CURRICULUM

## B.M.S.

| Semester I   | Semester III  | Semester V   |
|--|---|--|
| <ul style="list-style-type: none"> <li>• Introduction to Financial Accounts</li> <li>• Business Law</li> <li>• Business Statistics</li> <li>• Business Communication - I</li> <li>• Foundation Course - I</li> <li>• Foundation of Human Skills</li> <li>• Business Economics - I</li> </ul> | <p><b><u>Compulsory Papers</u></b></p> <ul style="list-style-type: none"> <li>• Information Technology in Business Management</li> <li>• Environmental Management (Foundation Course)</li> <li>• Business Planning &amp; Entrepreneurial Management</li> <li>• Accounting for Managerial Decisions</li> <li>• Strategic Management</li> </ul> <p><b>Elective Group (Any One)</b></p> <p><b><i>Finance (Any Two)</i></b></p> <ul style="list-style-type: none"> <li>• Basics of Financial Services</li> <li>• Introduction to Cost Accounting</li> <li>• Corporate Finance</li> <li>• Equity &amp; Debt Market</li> </ul> <p><b><i>Marketing (Any Two)</i></b></p> <ul style="list-style-type: none"> <li>• Consumer Behaviour</li> <li>• Product Innovations Management</li> <li>• Advertising</li> <li>• Social Marketing</li> </ul>                               | <p><b><u>Compulsory Papers</u></b></p> <ul style="list-style-type: none"> <li>• Logistics &amp; Supply Chain Management</li> <li>• Corporate Communication &amp; Public Relations</li> </ul> <p><b>Elective Group (Any One)</b></p> <p><b><i>Finance (Any Four)</i></b></p> <ul style="list-style-type: none"> <li>• Investment Analysis &amp; Portfolio Management</li> <li>• Commodity &amp; Derivatives Market</li> <li>• Wealth Management</li> <li>• Financial Accounting</li> <li>• Risk Management</li> <li>• Direct Taxes</li> </ul> <p><b><i>Marketing (Any Four)</i></b></p> <ul style="list-style-type: none"> <li>• Services Marketing</li> <li>• E-Commerce &amp; Digital Marketing</li> <li>• Sales &amp; Distribution Management</li> <li>• Customer Relationship Management</li> <li>• Industrial Marketing</li> <li>• Strategic Marketing Management</li> </ul> |
| Semester II  | Semester IV   | Semester VI  |
| <ul style="list-style-type: none"> <li>• Principles of Marketing</li> <li>• Industrial Law</li> <li>• Business Mathematics</li> <li>• Business Communication II</li> <li>• Foundation Course II</li> <li>• Business Environment</li> <li>• Principles of Management</li> </ul>               | <p><b><u>Compulsory Papers</u></b></p> <ul style="list-style-type: none"> <li>• Information Technology in Business Management II</li> <li>• Production &amp; Total Quality Management</li> <li>• Business Economics II</li> <li>• Ethics &amp; Governance (Foundation Course)</li> <li>• Business Research Methods</li> <li>• Production &amp; Total Quality Management</li> </ul> <p><b>Elective Group (Any One)</b></p> <p><b><i>Finance (Any Two)</i></b></p> <ul style="list-style-type: none"> <li>• Financial Institutions &amp; Market</li> <li>• Auditing</li> <li>• Strategic Cost Management</li> <li>• Behavioural Finance</li> </ul> <p><b><i>Marketing (Any Two)</i></b></p> <ul style="list-style-type: none"> <li>• Integrated Marketing Communication</li> <li>• Rural Marketing</li> <li>• Event Marketing</li> <li>• Tourism Marketing</li> </ul> | <p><b><u>Compulsory Papers</u></b></p> <ul style="list-style-type: none"> <li>• Operation Research</li> <li>• Project Work</li> </ul> <p><b>Elective Group (Any One)</b></p> <p><b><i>Finance (Any Four)</i></b></p> <ul style="list-style-type: none"> <li>• International Finance</li> <li>• Innovative Financial Services</li> <li>• Project Management</li> <li>• Strategic Financial Management</li> <li>• Financing Rural Development</li> <li>• Indirect Taxes</li> </ul> <p><b><i>Marketing (Any Two)</i></b></p> <ul style="list-style-type: none"> <li>• Brand Management</li> <li>• Retail Management</li> <li>• International Marketing</li> <li>• Media Planning &amp; Management</li> <li>• Sports Marketing</li> <li>• Marketing of Non-Profit Organisation</li> </ul>  |

# CURRICULUM

## B.Com. (Accounting & Finance)

| Semester I   | Semester III  | Semester V  |
|--|---|---|
| <ul style="list-style-type: none"> <li>• Financial Accounting I</li> <li>• Cost Accounting I</li> <li>• Financial Management I</li> <li>• Business Communication I</li> <li>• Foundation Course I</li> <li>• Commerce I</li> <li>• Business Economics I</li> </ul>       | <ul style="list-style-type: none"> <li>• Financial Accounting III</li> <li>• Cost Accounting II</li> <li>• Taxation II</li> <li>• Information Technology in Accountancy I</li> <li>• Foundation Course III</li> <li>• Business Law II</li> <li>• Business Economics II</li> </ul> | <ul style="list-style-type: none"> <li>• Financial Accounting - IV</li> <li>• Taxation - III</li> <li>• Information Technology in Accountancy - II</li> <li>• Foundation Course - IV</li> <li>• Business Law - III</li> <li>• Introduction to Management Accounting</li> <li>• Research Methodology in Accounting and Finance.</li> </ul> |
| Semester II  | Semester IV   | Semester VI   |
| <ul style="list-style-type: none"> <li>• Financial Accounting II</li> <li>• Auditing I</li> <li>• Innovative Financial Service</li> <li>• Business Communication II</li> <li>• Foundation Course II</li> <li>• Business Law I</li> <li>• Business Mathematics</li> </ul> | <ul style="list-style-type: none"> <li>• Financial Accounting III</li> <li>• Cost Accounting II</li> <li>• Taxation II</li> <li>• Information Technology in Accountancy I</li> <li>• Foundation Course III</li> <li>• Business Law II</li> <li>• Business Economics II</li> </ul> | <ul style="list-style-type: none"> <li>• Financial Accounting VII</li> <li>• Project WorkII</li> <li>• Cost Accounting IV</li> <li>• Financial Management III</li> <li>• Taxation V (Indirect Taxes III)</li> <li>• Economics Paper III (Indian Economy)</li> </ul>   |

## B.A. (MMC)

| Semester I  | Semester III  |
|---|---|
| <ul style="list-style-type: none"> <li>• Current Affairs</li> <li>• Fundamentals of Mass Communication</li> <li>• Effective Communication I</li> <li>• History of Mass Media</li> <li>• Visual Communication</li> <li>• Foundation Course I</li> </ul>        | <ul style="list-style-type: none"> <li>• Corporate Communication &amp; Public Relations</li> <li>• Media Studies</li> <li>• Introduction to Photography</li> <li>• Film Communication-I</li> <li>• Computers &amp; Multimedia-I</li> <li>• Electronic Media-I (Elective Paper)</li> </ul> |
| Semester II   | Semester IV   |
| <ul style="list-style-type: none"> <li>• Effective Communication II</li> <li>• Media, Gender &amp; Culture</li> <li>• Foundation Course II</li> <li>• Content Writing</li> <li>• Introduction to Journalism</li> <li>• Introduction to Advertising</li> </ul> | <ul style="list-style-type: none"> <li>• Writing &amp; Editing for Media</li> <li>• Media Law &amp; Ethics</li> <li>• Mass Media Research</li> <li>• Film Communication-II</li> <li>• Computers &amp; Multimedia-II</li> <li>• Electronic Media-II (Elective Paper)</li> </ul>            |

| ADVERTISING  | JOURNALISM   |
|--|--|
| Semester V   | Semester V   |
| <ul style="list-style-type: none"> <li>• Copywriting</li> <li>• Advertising &amp; Marketing Research</li> <li>• Globalization &amp; International Advertising</li> <li>• Agency Management</li> <li>• Direct marketing &amp; E-Commerce</li> <li>• Consumer Behaviour</li> </ul> | <ul style="list-style-type: none"> <li>• Reporting</li> <li>• Investigative Journalism</li> <li>• Global media and Conflict Resolution</li> <li>• Business and Financial Journalism</li> <li>• Mobile Journalism and New Media</li> <li>• News Media Management</li> </ul> |
| Semester VI  | Semester VI  |
| <ul style="list-style-type: none"> <li>• Digital Media</li> <li>• Ad Design</li> <li>• Advertising in Contemporary Society</li> <li>• Brand Management</li> <li>• Media Planning &amp; Buying</li> <li>• Entertainment &amp; Media Marketing</li> </ul>                          | <ul style="list-style-type: none"> <li>• Digital media</li> <li>• Newspaper &amp; Magazine Design</li> <li>• Contemporary Issues</li> <li>• Lifestyle Journalism</li> <li>• Crime Reporting</li> <li>• Fake News &amp; Fact Checking</li> </ul>                            |

# CURRICULUM

## B.A.

| F.Y.B.A.   | S.Y.B.A.   | T.Y.B.A.   |
|--|--|--|
| <p><b>Compulsory</b></p> <ul style="list-style-type: none"> <li>• Foundation Course</li> <li>• Communication Skills in English</li> <li>• Language (other than English) viz. Hindi or French</li> </ul> <p><b>Optional (Any 3)</b></p> <ul style="list-style-type: none"> <li>• English Literature</li> <li>• Hindi Literature</li> <li>• History</li> <li>• Psychology</li> <li>• Economics</li> <li>• Political Science</li> <li>• Statistics</li> </ul> | <p><b>Compulsory</b></p> <ul style="list-style-type: none"> <li>• Foundation Course</li> </ul> <p><b>Optional</b></p> <ul style="list-style-type: none"> <li>• Two papers in each optional subject out of three taken at F. Y. B. A level</li> </ul> <p><b>Applied Component</b><br/>(<i>Any One Subject</i>)</p> <ul style="list-style-type: none"> <li>• Mass Communication</li> <li>• Psychology of Adjustment</li> </ul> | <p><b>Six papers in one of the subjects offered at S. Y. B. A. level</b></p> <ul style="list-style-type: none"> <li>• Economics</li> <li>• English</li> <li>• Psychology</li> <li>• History</li> </ul> |

## B.Com.

| F.Y.B.Com.   | S.Y.B.Com.  | T.Y.B.Com.  |
|--|---|---|
| <p><b>Compulsory</b></p> <ul style="list-style-type: none"> <li>• Foundation Course – I &amp; II</li> <li>• Commerce – I &amp; II</li> <li>• Business Economics – I &amp; II</li> <li>• Business Communication – I &amp; II</li> <li>• Environmental Studies – I &amp; II</li> <li>• Mathematical &amp; Statistical Techniques – I &amp; II</li> <li>• Accountancy &amp;</li> <li>• Financial Management – I &amp; II</li> </ul> | <p><b>Compulsory</b></p> <ul style="list-style-type: none"> <li>• Foundation Course – III &amp; IV</li> <li>• Commerce - III &amp; IV</li> <li>• Business Economics - III &amp; IV</li> <li>• Business Law – I &amp; II</li> <li>• Accountancy &amp; Financial Management - III &amp; IV</li> <li>• Financial Accounting &amp; Auditing</li> </ul> <p style="text-align: center;"><b>OR</b></p> <ul style="list-style-type: none"> <li>• Business Management – Marketing Management</li> </ul> <p><b>Applied Component</b><br/>(<i>Any One Subject</i>)</p> <ul style="list-style-type: none"> <li>• Advertising – I &amp; II</li> <li>• Computer Programming – I &amp; II</li> </ul> | <p><b>Compulsory</b></p> <ul style="list-style-type: none"> <li>• Business Economics – V &amp; VI</li> <li>• Commerce – V &amp; VI</li> </ul> <p><b>Optional (Any one)</b></p> <ul style="list-style-type: none"> <li>• Business Management</li> <li>• Advanced Accountancy</li> </ul> <p><b>Applied Component (Any one)</b></p> <ul style="list-style-type: none"> <li>• Psychology of Human Behaviour at Work</li> <li>• Direct &amp; Indirect Taxation</li> </ul> <p><b>Applied Component (Any one)</b></p> <ul style="list-style-type: none"> <li>• Export Marketing</li> <li>• Computer Systems &amp; Application</li> </ul> |

## B.Sc.

| F.Y.B.Sc.   | S.Y.B.Sc.   | T.Y.B.Sc.  |
|---|---|--|
| <p><b>Compulsory</b></p> <ul style="list-style-type: none"> <li>• Foundation Course</li> </ul> <p><b>A student shall offer any one group comprising three subjects</b></p> <ul style="list-style-type: none"> <li>• Chemistry – Botany – Zoology</li> <li>• Chemistry – Physics – Mathematics</li> <li>• Physics – Chemistry – Botany</li> <li>• Physics – Chemistry – Zoology</li> <li>• Physics – Mathematics – Statistics</li> </ul> | <p><b>Compulsory</b></p> <ul style="list-style-type: none"> <li>• Foundation Course</li> </ul> <p><b>A student shall offer any one group comprising two subjects mentioned here if offered at F. Y. B.Sc. level</b></p> <ul style="list-style-type: none"> <li>• Botany – Zoology</li> <li>• Chemistry – Botany</li> <li>• Chemistry – Physics</li> <li>• Chemistry – Zoology</li> <li>• Mathematics – Chemistry</li> <li>• Mathematics – Physics</li> <li>• Mathematics – Statistics</li> <li>• Physics – Botany</li> <li>• Physics – Statistics</li> <li>• Physics – Zoology</li> </ul> | <p><b>Major Option 1</b></p> <ul style="list-style-type: none"> <li>• Chemistry</li> <li>• Drugs &amp; Dyes (<i>Applied Component</i>)</li> </ul> <p><b>Major Option 2</b></p> <ul style="list-style-type: none"> <li>• Physics</li> <li>• Computer Science: Advanced Microprocessor, Microcontrollers &amp; Python Programing (<i>Applied Component</i>)</li> </ul> |

# CURRICULUM

## M.A. (English Literature)

| Sem – I   | Sem – II  |
|---|---|
| <ul style="list-style-type: none"> <li>Literary Theory and Criticism (Compulsory)</li> <li>Linguistic &amp; Stylistic Analysis of Texts (Compulsory)</li> <li>Pre 20th Century Fiction (Compulsory)</li> <li>Drama (Compulsory)</li> </ul>  | <ul style="list-style-type: none"> <li>Literary Theory and Criticism (Compulsory)</li> <li>Linguistic &amp; Stylistic Analysis of Texts (Compulsory)</li> <li>Fiction from 1900 onwards (Compulsory)</li> <li>Drama (Compulsory)</li> </ul> |
| Sem – III   | Sem – IV  |
| <ul style="list-style-type: none"> <li>Poetry from Chaucer to Shakespeare (Elective)</li> <li>19th Century American Literature (Elective)</li> <li>20th Century American Literature (Elective)</li> <li>Shakespeare (Elective)</li> <li>Postcolonial Literature (Elective)</li> </ul> | <ul style="list-style-type: none"> <li>Political Reading of Literature (Elective)</li> <li>English for Academic &amp; Commercial Purpose (Elective)</li> <li>Research Project (Compulsory)</li> </ul>                                       |

## M.A. (Psychology)

| Sem – I   | Sem – II   |
|---|--|
| <ul style="list-style-type: none"> <li>Personality Psychology (Core)</li> <li>Research Methodology for Psychology (Core)</li> <li>Statistics for Psychology (Core)</li> <li>Psychology of Cognition and Emotion (Core)</li> <li>Experimental Psychology Practicals (Core)</li> </ul>  | <ul style="list-style-type: none"> <li>Evolutionary Psychology (Core)</li> <li>Intervention Systems in Psychology (Core)</li> <li>Multiculturalism: Theory and Practice (Core)</li> <li>Positive Psychology (Core)</li> <li>Psychological Testing and Psychometrics Practicals (Core)</li> </ul> |
| Sem – III   | Sem – IV   |
| <ul style="list-style-type: none"> <li>Assessment in Clinical Psychology (Elective)</li> <li>Psychopathology Across lifespan (Elective)</li> <li>Psychotherapy (Elective)</li> <li>Rehabilitation Psychology (Elective)</li> <li>CBT and REBT: Basic and Application (Elective)</li> <li>Practicum in Clinical Psychology (Elective)</li> </ul> | <ul style="list-style-type: none"> <li>Applications of Neuropsychology for Health Management (Elective – Ability Enhancement Course)</li> <li>Change Management (Elective – Interdisciplinary Course)</li> <li>Project Based Course</li> </ul>   |

## M.A. (Entertainment , Media & Advertising)

| Sem – I   | Sem – II   |
|---|--|
| <b>Core Courses</b> <ul style="list-style-type: none"> <li>Overview I: Print, Radio, Television and Advertising</li> <li>Overview II: Film, Digital, Events, Gaming and Animation</li> <li>Media Communication Theories</li> <li>Media Management</li> </ul>  | <b>Core Courses</b> <ul style="list-style-type: none"> <li>Introduction to Media Research</li> <li>Media Marketing (IMC)</li> <li>Media Finance &amp; Accounting</li> <li>Entrepreneurship, Innovation &amp; Media Laws</li> </ul> |
| SPECIALIZATION in Film and Television   |  |
| Sem – III   | Sem – IV   |
| <b>Core Courses</b> <ul style="list-style-type: none"> <li>Broadcast Business Management</li> <li>Film Production &amp; Content pipeline</li> <li>An Orientation to New Media Technologies</li> <li>Television &amp; Radio Production &amp; Programming</li> <li>Film Distribution and Marketing</li> </ul> | <b>Optional Courses</b> <ul style="list-style-type: none"> <li>Media Research Analytical Skills</li> <li>Business Plan and Negotiation Skills</li> </ul> <b>Dissertation / Field Project</b>                                       |
| SPECIALIZATION in Advertising and Marketing Communication   |  |
| Sem – III   | Sem – IV   |
| <b>Core Courses</b> <ul style="list-style-type: none"> <li>Account Planning &amp; Media Business</li> <li>Media &amp; Consumer Behaviour</li> <li>Strategic Brand Management</li> <li>Advertising Agency Structure &amp; Management</li> <li>Media Planning and Buying</li> </ul>                           | <b>Optional Courses</b> <ul style="list-style-type: none"> <li>Media Research Analytical Skills</li> <li>Digital and Socials Media Advertising &amp; Marketing</li> </ul> <b>Dissertation / Field Project</b>                      |

# CURRICULUM

## M.Sc. (Chemistry)

| Sem – I   | Sem – II  |
|---|---|
| <ul style="list-style-type: none"><li>Physical Chemistry</li><li>Inorganic Chemistry</li><li>Organic Chemistry</li><li>Analytical Chemistry</li></ul> | <ul style="list-style-type: none"><li>Physical Chemistry</li><li>Inorganic Chemistry</li><li>Organic Chemistry</li><li>Analytical Chemistry</li></ul> |

### **Inorganic Chemistry Specialization**

| Sem – III  | Sem – IV   |
|--|--|
| <ul style="list-style-type: none"><li>Chemistry of Inorganic Solids</li><li>Bioinorganic and Coordination Chemistry.</li><li>Spectral Methods in Inorganic Chemistry</li><li>Applied Chemistry</li></ul> | <ul style="list-style-type: none"><li>Properties of Inorganic Solids and Group Theory.</li><li>Organometallics and main group Chemistry</li><li>Instrumental methods in Inorganic Chemistry.</li><li>Intellectual Property Rights &amp; Cheminformatics</li><li>Research Methodology</li></ul> |

### **Analytical Chemistry Specialization**

| Sem – III   | Sem – IV   |
|---|--|
| <ul style="list-style-type: none"><li>Quality In Analytical Chemistry</li><li>Advance Instrumental Techniques</li><li>Bioanalytical Chemistry and Food Analysis</li><li>Environmental and Certain Industrially Important Material</li><li>Pharmaceutical and Organic Analysis</li></ul> | <ul style="list-style-type: none"><li>Quality In Analytical Chemistry</li><li>Advanced Instrumental Techniques</li><li>Selected Topics in Analytical Chemistry</li><li>Intellectual Property Rights &amp; Cheminformatics</li><li>Research Methodology</li></ul> |

### **Organic Chemistry Specialization**

| Sem – III  | Sem – IV  |
|--|---|
| <ul style="list-style-type: none"><li>Theoretical organic chemistry-I</li><li>Synthetic Organic Chemistry-I Natural products and Spectroscopy</li><li>Medicinal, Biogenesis and green chemistry</li><li>Bioorganic chemistry</li></ul> | <ul style="list-style-type: none"><li>Theoretical organic chemistry-II</li><li>Synthetic organic chemistry-II</li><li>Natural products and heterocyclic chemistry</li><li>Intellectual Property Rights &amp; Cheminformatics</li><li>Research Methodology</li></ul> |

## M.Sc. (Physics) Elective: Microcontrollers and Interfacing Embedded Systems and RTOS

| Sem – I  | Sem – II   |
|--|--|
| <ul style="list-style-type: none"><li>Mathematical Methods</li><li>Classical Mechanics</li><li>Quantum Mechanics-I</li><li>Solid State Physics</li></ul>                 | <ul style="list-style-type: none"><li>Advanced Electronics</li><li>Electrodynamics</li><li>Quantum Mechanics-II</li><li>Solid State Devices</li></ul>  |
| Sem – III  | Sem – IV   |
| <ul style="list-style-type: none"><li>Statistical Mechanics</li><li>Nuclear Physics</li><li>Microcontrollers and Interfacing</li><li>Embedded Systems and RTOS</li></ul> | <ul style="list-style-type: none"><li>Experimental Physics</li><li>Atomic and Molecular Physics</li><li>Advanced Microprocessor and ARM 7</li><li>VHDL and Communication Interface</li></ul> |

# CURRICULUM

## M.Sc. (Biotechnology)

| Sem – I  | Sem – II  |
|--|---|
| <ul style="list-style-type: none"> <li>Biochemistry</li> <li>Immunology</li> <li>Cell Biology</li> <li>Emerging technologies and molecular diagnostics</li> </ul>  | <ul style="list-style-type: none"> <li>Bioinformatics and Biostatistics</li> <li>Plant and Animal Biotechnology</li> <li>Bioprocess Engineering and technology</li> <li>Intellectual property rights and Bioethics</li> </ul> |
| Sem – III  | Sem – IV  |
| <ul style="list-style-type: none"> <li>Applied Virology &amp; Microbiology</li> <li>Environmental Biotechnology</li> <li>Biologics &amp; Regulatory Affairs</li> <li>Molecular enzymology and Enzyme Technology</li> </ul> | <ul style="list-style-type: none"> <li>Nanobiotechnology</li> <li>OMICS &amp; System biology</li> <li>Drug Discovery &amp; Clinical Studies</li> <li>Scientific Writing and Food Biotechnology</li> </ul>                     |

## M.Sc. (Computer Science)

| Sem – I   | Sem – II   |
|---|--|
| <ul style="list-style-type: none"> <li>Analysis of Algorithms and Researching Computing</li> <li>Advanced Networking Concepts</li> <li>Advanced Database Systems</li> <li>Robotics &amp; Artificial Intelligence</li> </ul>   | <ul style="list-style-type: none"> <li>Advanced Operating Systems</li> <li>Design and implementation of Modern Compilers</li> <li><b>Elective I</b><br/><b>Track A:</b> Cloud Computing –I (Concepts and Design of Web services)<br/><b>Track B:</b> Cyber and Information Security- I (Network Security)</li> <li><b>Elective II</b><br/><b>Track C:</b> Business Intelligence and Big Data Analytics –I (Business Intelligence )<br/><b>Track D:</b> Machine Learning –I (Fundamentals of Machine Intelligence)</li> </ul>   |
| Sem – III   | Sem – IV   |
| <ul style="list-style-type: none"> <li>Ubiquitous Computing</li> <li>Social Network Analysis</li> <li><b>Elective I</b><br/><b>Track A:</b> Cloud Computing –II (Cloud Computing Technologies)<br/><b>Track B:</b> Cyber and Information Security- II (Cyber Forensics)</li> <li><b>Elective II</b><br/><b>Track C:</b> Business Intelligence and Big Data Analytics –II (Mining Massive Data sets )<br/><b>Track D:</b> Machine Learning –II (Advanced Machine Learning)</li> <li><b>Project Proposal</b></li> </ul> | <ul style="list-style-type: none"> <li>Simulation and Modeling</li> <li><b>Specialization - Track A:</b> Cloud Computing –III (Building Clouds and Services)<br/><b>Specialization - Track B:</b> Cyber and Information Security- II (Cryptography and Crypt Analysis)</li> <li><b>Specialization - Track C:</b> Business Intelligence and Big Data Analytics –III (Intelligent Data Analysis)</li> <li><b>Specialization - Track D:</b> Machine Learning –III (Computational Intelligence)</li> <li><b>Internship with Industry</b></li> <li><b>Project Implementation</b></li> </ul> |

## M.Sc. (Information Technology)

| Sem – I  | Sem – II  |
|--|---|
| <ul style="list-style-type: none"> <li>Research in Computing</li> <li>Data Science</li> <li>Cloud Computing</li> <li>Soft Computing Techniques</li> </ul>  | <ul style="list-style-type: none"> <li>Big Data Analytics</li> <li>Modern Networking</li> <li>Microservices Architecture</li> <li>Image Processing</li> </ul> |
| Sem – III  | Sem – IV  |
| <ul style="list-style-type: none"> <li>Technical Writing and Entrepreneurship Development.</li> <li>Applied Artificial Intelligence</li> <li>Cloud Management</li> <li>Data Centre Technologies</li> </ul> | <ul style="list-style-type: none"> <li>Information Security Auditing</li> <li>Blockchain</li> <li>Cyber Forensics</li> <li>Remote Sensing</li> </ul>          |

# ADMISSION GUIDELINES

Students seeking admission to the college should apply online on the Portal <http://admissions.rdnational.ac.in>. **The entire admission process including payment of fees is Online.**

## **COST OF FORM AND PROSPECTUS**

Rs. 100/- vide circular number CONCOL/FEE/14 OF 2008 - dated 23rd May, 2008 applicable from the academic year 2008-09.

## **MINORITY STATUS**

The institution is recognized as a linguistic minority institution. 50% seats are reserved for Sindhi Minority Community in every course offered by the college.

## **DOCUMENTS REQUIRED**

- Original HSC Marksheet
- 4 attested photo copies of Marksheet (*front & back side of HSC Marksheet*)
- 4 attested photo copies of Leaving Certificate
- 2 photograph of the student
- Photograph of the Parent / Guardian
- In case of a guardian, letter from the guardian accepting the guardianship of the student.
- Proof of Residence (*Electrical Bill, Telephone Bill, Rent Agreement, Ration Card, Aadhar Card (any one)*)

### ***Students from other Education Boards***

In addition to the above mentioned documents the student will be required to submit the following:

- Original Leaving / Transfer / Migration Certificate + 4 attested photo copies
- Provisional Eligibility Certificate from University of Mumbai

### ***Students Belonging to Foreign Universities***

In addition to the above mentioned documents, the student will be required to submit the following:

- 4 attested photo copies of the entire Passport
- 4 attested photo copies of the Visa
- Provisional Eligibility Certificate from University of Mumbai

### ***Students belonging to Reserved Category***

In addition to above mentioned documents the student will be required to submit the following:

- Caste Certificate in student's name + 2 attested photo copies
- Leaving / Transfer Certificate
- Income and Tahsildar Certificate for Scheduled Caste\* Form No. 16 only Freeship Form for SC Category

***Students belonging to Sindhi Minority (At least one parent should be from the Sindhi Community)***

In addition to above mentioned documents the student will be required to submit the following:

- Affidavit on Rs. 100/- stamp paper stating that he/she belongs to Sindhi Community and atleast one of the parents is from Sindhi Community + 2 attested photocopies.
- Leaving /Transfer/Migration Certificate for other boards. + 4 attested photo copies

## **REMARKS**

- Students from other institutions will be required to submit their Leaving/ Transfer Certificate/ Migration Certificate, at the time of admission.
- Outside board admission is Provisional till it is confirmed by the University.
- Final Eligibility Certificate is to be submitted by the end of first term.
- No Objection Certificate from the previous college attended.
- IB diploma, Cambridge and foreign students have to contact the eligibility department at Kalina, to obtain a prime facie letter for provisional admission.

## **NO ADMISSION SHALL BE CONSIDERED AS DULY GRANTED UNLESS**

- Original documents are submitted and verified
- Necessary fee is paid and receipt obtained thereof.
- Approved by the competent authority.

## **RESERVATION FOR S.C., ST., D.T., NT., OBC, VJNT & SBC STUDENTS**

## **RESERVATION FOR HANDICAPPED STUDENTS**

- As per Government and University rules.
- Relevant documents to be submitted as per rules.

## **CANCELLATION OF ADMISSION**

- Students who wish to cancel their admission should fill the Performa available in the Administrative Office.
- The form should be signed by the Vice Principal/ the Registrar.

## **REFUND OF FEES**

(As per University guidelines vide Circular No. UG /412 of 2008)

Ordinance relating to the refund of all the fees shall be related to all the faculties O.2859 (a) All fees paid by a student at the time of admission shall be refunded to him/her after deduction of Rs. 500/- as administrative charges, if the student informs the Principal of the college/institution, in writing, before the date of

# ADMISSION GUIDELINES

commencement of the term that he/she desires to cancel his/her admission. However, cancellations requested after the commencement of the term are governed by the following regulations:

| Period  | Deduction Charges                |
|---|----------------------------------|
| Prior to commencement of academic term and instruction of the course.                         | Rs. 500/- Lump Sum               |
| Upto 20 Days After the commencement of academic term of the course.                           | 20% of the total Amount of fees  |
| From 21 <sup>st</sup> Day upto 50 Days After the commencement of academic term of the course. | 30% of the total Amount of fees  |
| From 51 <sup>st</sup> Day upto 80 Days After the commencement of academic term of the course. | 50% of the total Amount of fees  |
| From September 1 <sup>st</sup> upto September 30 <sup>th</sup>                                | 80% of the total Amount of fees  |
| After September 30 <sup>th</sup>  | 100% of the total Amount of fees |

**O.2859 (A)** All fees paid by a student at the time of admission shall be refunded to him/ her after deduction of

(i) At the time of applying for admission, if he/she intimates in writing that he/ she has also applied or intends to apply for admission to one or more of the professional colleges or institutions or departments affiliated to this university which imparts instructions for degree courses in Engineering, Architecture, Pharmacy, Physiotherapy, Technology, Medicine, Dentistry, Ayurved / Unani Medicine, Homeopathy, Painting, Commercial Art, Home Science Engineering.

(ii) He/she withdraws his/her application in writing within 7 days from the date of admission to a professional college or a course mentioned in (i) above, but not later than 31<sup>st</sup> August of the same academic year. In such cases it shall be binding on the student to produce documentary proof of his/her being admitted to the professional course.

**O.2859 (B)** All fees paid by a student at the time of admission shall be refunded to him/ her after deduction of Rs. 250/- or all prescribed fees whichever is less as administrative charges provided: At the time of applying for admission, if he/she intimates in writing that he/she has also applied or intends to apply for admission to one or more of the professional colleges or institutions or departments affiliated to this university which imparts instruction for degree course in Engineering, Architecture, Pharmacy, Physiotherapy, Occupational, Therapy,

Audiology & Speech Therapy, Technology, Medicine, Dentistry, Ayurved / Unani Medicine, Homeopathy, Painting, Commercial Art, Home Science and courses conducted by National Defence Academy or Indian Institute of Technology or Regional college of Engineering.

He/ She withdraws his/her application in writing within 7 days from the date of admission to a professional college or a

course mentioned in (i) above, but not later than 30th September of the same academic year. In such cases it shall be binding on the student to produce documentary proof of his/her being admitted to the professional course.

## **Professional Courses**

The refund of fees in professional courses will be done on as prorata basis as they are unaided courses. No refund of fees will be made even on prorata basis, after 31<sup>st</sup> August.

## **COLLEGE DEPOSIT**

Application for refund of college deposits must be made on the prescribed form accompanied by the relevant deposit receipts within one year of applicant's ceasing to be a regular student of the college, failing which the college deposit will be forfeited. The period of one year will be counted from the last date of term, last attended by the applicant or in case of the student leaving the college with the permission of the principal during the course; from the date he/she is permitted to leave the college. N.B.: fee receipt and Identity Card must be produced while applying for refund of fees or college deposits. A penalty of Rs. 50/- will be levied for each receipt lost by the student and consequently not attached to the application for withdrawal of the deposits.

## **CHANGE OF COLLEGE**

No student will be permitted to change the college during the course of the year without prior permission of the Principal in writing.

## **CHANGE OF SUBJECT**

Students are not permitted to change their subject. Only in exceptional circumstances which need to substantiate in writing counter signed by parents may be considered by the subject change Committee. If necessary the student along with his / her parent may be called to meet the Subject change Committee.

# FEES STRUCTURE A.Y. 2021 – 2022

## B.Com.

| SR. NO | FEES HEAD                                      | F.Y.           | S.Y.           | T.Y.           |
|--------|--|----------------|----------------|----------------|
| 1      | ADMISSION PROCESSING FEE                       | 200.00         | 200.00         | 200.00         |
| 2      | TUITION FEE                                    | 800.00         | 800.00         | 800.00         |
| 3      | LIBRARY FEE                                    | 200.00         | 200.00         | 200.00         |
| 4      | GYMKHANA FEE                                   | 400.00         | 400.00         | 400.00         |
| 5      | OTHER FEE/EXTRA CURR. ACT                      | 250.00         | 250.00         | 250.00         |
| 6      | ENROLMENT FEE                                  | 220.00         | 0.00           | 0.00           |
| 7      | EXAMINATION FEE                                | 2100.00        | 2100.00        | 0.00           |
| 8      | IDENTITY CARD                                  | 50.00          | 50.00          | 50.00          |
| 9      | UNIVERSITY SPORTS CUL. ACT                     | 30.00          | 30.00          | 30.00          |
| 10     | E-CHARGE                                       | 20.00          | 20.00          | 20.00          |
| 11     | D.R. FUND                                      | 10.00          | 10.00          | 10.00          |
| 12     | MAGAZINE FEE                                   | 100.00         | 100.00         | 100.00         |
| 13     | GROUP INSURANCE                                | 125.00         | 125.00         | 125.00         |
| 14     | S.W. FUND                                      | 50.00          | 50.00          | 50.00          |
| 15     | UTILITY FEE                                    | 250.00         | 250.00         | 250.00         |
| 16     | DEVELOPMENT FUND                               | 500.00         | 500.00         | 500.00         |
| 17     | CAUTION MONEY                                  | 150.00         | 0.00           | 0.00           |
| 18     | LIBRARY DEPOSIT                                | 250.00         | 0.00           | 0.00           |
| 19     | V.C. FUND                                      | 20.00          | 20.00          | 20.00          |
| 20     | E-SUVIDHA                                      | 50.00          | 50.00          | 50.00          |
| 21     | N.S.S.   | 10.00          | 10.00          | 10.00          |
| 22     | MARKSHEET FEE                                  | 100.00         | 100.00         | - -            |
| 23     | ALUMNI ASSOCIATION                             | 25.00          | 25.00          | 25.00          |
| 24     | NSS (EKAK YOZANA FEE)                          | 10.00          | 10.00          | 10.00          |
| 25     | E.R.P CHARGES                                  | 140.00         | 140.00         | 140.00         |
| *      | <b>TOTAL</b>                                   | <b>6060.00</b> | <b>5440.00</b> | <b>3240.00</b> |
|        | *New Admission to S.Y. Classes                 | 0.00           | 400.00         | 0.00           |
|        | *New Admission to T.Y. Classes                 | 0.00           | 0.00           | 400.00         |
|        | <b>COMPUTER FEES ONLY FOR COMPUTER SUBJECT</b> | <b>0.00</b>    | <b>600.00</b>  | <b>1500.00</b> |

*Students who opt for Computer Programming at S.Y.B.Com. level and Computer System at T.Y.B.Com. level will be required to pay on additional amount of Rs. 600/- as Fees and or 1500/- respectively.*

## B.Com. (Accounting & Finance)

| SR. NO | FEES HEAD                      | F.Y.            | S.Y.            | T.Y.            |
|--------|--------------------------------|-----------------|-----------------|-----------------|
| 1      | ADMISSION PROCESSING FEE       | 200.00          | 200.00          | 200.00          |
| 2      | TUITION FEE                    | 10000.00        | 10000.00        | 10000.00        |
| 3      | LABORATORY FEE                 | 1000.00         | 1000.00         | 1000.00         |
| 4      | LIBRARY FEE                    | 600.00          | 600.00          | 600.00          |
| 5      | GYMKHANA FEE                   | 400.00          | 400.00          | 400.00          |
| 6      | OTHER FEE/EXTRA CURR. ACT      | 250.00          | 250.00          | 250.00          |
| 7      | IDENTITY CARD                  | 50.00           | 50.00           | 50.00           |
| 8      | UNIVERSITY SPORTS CUL. ACT     | 30.00           | 30.00           | 30.00           |
| 9      | MAGAZINE FEE                   | 100.00          | 100.00          | 100.00          |
| 10     | GROUP INSURANCE                | 125.00          | 125.00          | 125.00          |
| 11     | S.W. FUND                      | 50.00           | 50.00           | 50.00           |
| 12     | UTILITY FEE                    | 250.00          | 250.00          | 250.00          |
| 13     | DEVELOPMENT FUND               | 500.00          | 500.00          | 500.00          |
| 14     | COMPUTER FEE                   | 1000.00         | 1000.00         | 1000.00         |
| 15     | V.C. FUND                      | 20.00           | 20.00           | 20.00           |
| 16     | E-SUVIDHA                      | 50.00           | 50.00           | 50.00           |
| 17     | E-CHARGE                       | 20.00           | 20.00           | 20.00           |
| 18     | D.R. FUND                      | 10.00           | 10.00           | 10.00           |
| 19     | INDUSTRIAL VISIT FEE           | 500.00          | 500.00          | 500.00          |
| 20     | EXAMINATION FEE                | 2772.00         | 2772.00         | 0.00            |
| 21     | ENROLMENT FEE                  | 220.00          | 0.00            | 0.00            |
| 22     | LABORATORY DEPOSIT             | 400.00          | 0.00            | 0.00            |
| 23     | CAUTION MONEY                  | 150.00          | 0.00            | 0.00            |
| 24     | LIBRARY DEPOSIT                | 250.00          | 0.00            | 0.00            |
| 25     | N.S.S.                         | 10.00           | 10.00           | 10.00           |
| 26     | PROJECT FEES                   | 00.00           | 00.00           | 500.00          |
| 27     | MARKSHEET FEE                  | 100.00          | 100.00          | - -             |
| 28     | ALUMNI ASSOCIATION             | 25.00           | 25.00           | 25.00           |
| 29     | NSS (EKAK YOZANA FEE)          | 10.00           | 10.00           | 10.00           |
| 30     | E.R.P CHARGES                  | 140.00          | 140.00          | 140.00          |
| *      | <b>TOTAL</b>                   | <b>19232.00</b> | <b>18212.00</b> | <b>15840.00</b> |
|        | *New Admission to S.Y. Classes | 0.00            | 800.00          | 0.00            |
|        | *New Admission to T.Y. Classes | 0.00            | 0.00            | 800.00          |

# FEES STRUCTURE A.Y. 2021 – 2022

## B.A.

| SR. NO | FEES HEAD                                   | F.Y.           | S.Y.           | T.Y.           |
|--------|---|----------------|----------------|----------------|
| 1      | ADMISSION PROCESSING FEE                    | 200.00         | 200.00         | 200.00         |
| 2      | TUITION FEE                                 | 800.00         | 800.00         | 800.00         |
| 3      | LIBRARY FEE                                 | 200.00         | 200.00         | 200.00         |
| 4      | GYMKHANA FEE                                | 400.00         | 400.00         | 400.00         |
| 5      | OTHER FEE/EXTRA CURR. ACT                   | 250.00         | 250.00         | 250.00         |
| 6      | ENROLMENT FEE                               | 220.00         | 0.00           | 0.00           |
| 7      | EXAMINATION FEE                             | 2100.00        | 2100.00        | 0.00           |
| 8      | IDENTITY CARD                               | 50.00          | 50.00          | 50.00          |
| 9      | UNIVERSITY SPORTS CUL. ACT                  | 30.00          | 30.00          | 30.00          |
| 10     | E-CHARGE                                    | 20.00          | 20.00          | 20.00          |
| 11     | D.R. FUND                                   | 10.00          | 10.00          | 10.00          |
| 12     | MAGAZINE FEE                                | 100.00         | 100.00         | 100.00         |
| 13     | GROUP INSURANCE                             | 125.00         | 125.00         | 125.00         |
| 14     | S.W. FUND                                   | 50.00          | 50.00          | 50.00          |
| 15     | UTILITY FEE                                 | 250.00         | 250.00         | 250.00         |
| 16     | DEVELOPMENT FUND                            | 500.00         | 500.00         | 500.00         |
| 17     | CAUTION MONEY                               | 150.00         | 0.00           | 0.00           |
| 18     | LIBRARY DEPOSIT                             | 250.00         | 0.00           | 0.00           |
| 19     | V.C. FUND                                   | 20.00          | 20.00          | 20.00          |
| 20     | E-SUVIDHA                                   | 50.00          | 50.00          | 50.00          |
| 21     | N.S.S.                                      | 10.00          | 10.00          | 10.00          |
| 22     | MARKSHEET FEE                               | 100.00         | 100.00         | --             |
| 23     | ALUMNI ASSOCIATION                          | 25.00          | 25.00          | 25.00          |
| 24     | NSS (EKAK YOZANA FEE)                       | 10.00          | 10.00          | 10.00          |
| 25     | E.R.P CHARGES                               | 140.00         | 140.00         | 140.00         |
| *      | <b>TOTAL</b>                                | <b>6060.00</b> | <b>5440.00</b> | <b>3240.00</b> |
|        | *New Admission to S.Y. Classes              | 0.00           | 400.00         | 0.00           |
|        | *New Admission to T.Y. Classes              | 0.00           | 0.00           | 400.00         |
|        | <b>LAB FEES ONLY FOR PSYCHOLOGY SUBJECT</b> | 0.00           | 0.00           | 800.00         |
|        | <b>FRENCH SUBJECT FEES</b>                  | 3000.00        | 0.00           | 0.00           |

## M.A. (ENGLISH)

| SR. NO | FEES HEAD                   | M.A. - I       | M.A. - II      |
|--------|-----------------------------|----------------|----------------|
| 1      | ADMISSION PROCESSING FEE    | 200.00         | 200.00         |
| 2      | TUITION FEE                 | 3000.00        | 3000.00        |
| 3      | CAUTION MONEY               | 150.00         | 0.00           |
| 4      | LIBRARY FEE                 | 1000.00        | 1000.00        |
| 5      | GYMKHANA FEE                | 400.00         | 400.00         |
| 6      | OTHER FEE/EXTRA CURR. ACT   | 250.00         | 250.00         |
| 7      | IDENTITY CARD               | 50.00          | 50.00          |
| 8      | UNIVERSITY SPORTS CUL. ACT  | 30.00          | 30.00          |
| 9      | MAGAZINE FEE                | 100.00         | 100.00         |
| 10     | GROUP INSURANCE             | 125.00         | 125.00         |
| 11     | S.W. FUND                   | 50.00          | 50.00          |
| 12     | DEVELOPMENT FUND            | 500.00         | 500.00         |
| 13     | V.C. FUND                   | 20.00          | 20.00          |
| 14     | E-SUVIDHA                   | 50.00          | 50.00          |
| 15     | E-CHARGE                    | 20.00          | 20.00          |
| 16     | D.R. FUND                   | 10.00          | 10.00          |
| 17     | LIBRARY DEPOSIT             | 250.00         | 0.00           |
| 18     | REGISTRATION FORM/FEE       | 1025.00        | 0.00           |
| 19     | LABORATORY DEPOSIT          | 400.00         | 0.00           |
| 20     | N.S.S.                      | 20.00          | 20.00          |
| 21     | UTILITY FEES                | 250.00         | 250.00         |
| 22     | PROJECT FEES                | 00.00          | 2000.00        |
| 23     | E.R.P CHARGES               | 140.00         | 140.00         |
| *      | <b>TOTAL</b>                | <b>8040.00</b> | <b>8215.00</b> |
|        | *New Admission to M.A. – II | 0.00           | 800.00         |

# FEES STRUCTURE A.Y. 2021 – 2022

## M.A. (Psychology)

| SR. NO | FEES HEAD                   | M.A. - I        | M.A. - II      |
|--------|-----------------------------|-----------------|----------------|
| 1      | ADMISSION PROCESSING FEE    | 200.00          | 200.00         |
| 2      | TUITION FEE                 | 3000.00         | 3000.00        |
| 3      | LABORATORY FEE              | 2000.00         | 2000.00        |
| 4      | LIBRARY FEE                 | 1000.00         | 1000.00        |
| 5      | GYMKHANA FEE                | 400.00          | 400.00         |
| 6      | OTHER FEE                   | 250.00          | 250.00         |
| 7      | IDENTITY CARD               | 50.00           | 50.00          |
| 8      | UNIVERSITY SPORTS CUL. ACT  | 30.00           | 30.00          |
| 9      | MAGAZINE FEE                | 100.00          | 100.00         |
| 10     | GROUP INSURANCE             | 125.00          | 125.00         |
| 11     | S.W. FUND                   | 50.00           | 50.00          |
| 12     | DEVELOPMENT FUND            | 500.00          | 500.00         |
| 13     | V.C. FUND                   | 20.00           | 20.00          |
| 14     | E-SUVIDHA                   | 50.00           | 50.00          |
| 15     | E-CHARGE                    | 20.00           | 20.00          |
| 16     | D.R. FUND                   | 10.00           | 10.00          |
| 17     | LIBRARY DEPOSIT             | 250.00          | 0.00           |
| 18     | LABORATORY DEPOSIT          | 400.00          | 0.00           |
| 19     | CAUTION MONEY               | 150.00          | 0.00           |
| 20     | REGISTRATION FORM & FEE     | 1025.00         | 0.00           |
| 21     | UTILITY FEE                 | 250.00          | 250.00         |
| 22     | COMPUTER FEE                | 500.00          | 500.00         |
| 23     | N.S.S.                      | 20.00           | 20.00          |
| 24     | E.R.P CHARGES               | 140.00          | 140.00         |
| *      | <b>TOTAL</b>                | <b>10540.00</b> | <b>8715.00</b> |
|        | *New Admission to M.A. – II | 0.00            | 800.00         |

## M.A. (Media, Advertising & Entertainment)

| SR. NO | FEES HEAD                   | M.A. - I        | M.A. - II       |
|--------|-----------------------------|-----------------|-----------------|
| 1      | ADMISSION PROCESSING FEE    | 2000.00         | 2000.00         |
| 2      | TUITION FEE                 | 32000.00        | 32000.00        |
| 3      | CAUTION MONEY               | 150.00          | 00.00           |
| 4      | LIBRARY FEE                 | 2000.00         | 2000.00         |
| 5      | COMPUTER LABORATORY FEE     | 12000.00        | 12000.00        |
| 6      | GYMKHANA FEE                | 400.00          | 400.00          |
| 7      | OTHER FEE/EXTRA CURR. ACT   | 250.00          | 250.00          |
| 8      | IDENTITY CARD               | 50.00           | 50.00           |
| 9      | UNIVERSITY SPORTS CUL. ACT  | 30.00           | 30.00           |
| 10     | LIBRARY DEPOSIT             | 250.00          | 0.00            |
| 11     | MAGAZINE FEE                | 100.00          | 100.00          |
| 12     | GROUP INSURANCE             | 125.00          | 125.00          |
| 13     | S.W. FUND                   | 50.00           | 50.00           |
| 14     | UTILITY FEE                 | 250.00          | 250.00          |
| 15     | DEVELOPMENT FUND            | 500.00          | 500.00          |
| 16     | V.C. FUND                   | 20.00           | 20.00           |
| 17     | E-SUVIDHA                   | 50.00           | 50.00           |
| 18     | E-CHARGE                    | 20.00           | 20.00           |
| 19     | D.R. FUND                   | 10.00           | 10.00           |
| 20     | N.S.S.                      | 20.00           | 20.00           |
| 21     | E.R.P CHARGES               | 140.00          | 140.00          |
| *      | <b>TOTAL</b>                | <b>50415.00</b> | <b>50015.00</b> |
|        | *New Admission to M.A. – II | 0.00            | 800.00          |

# FEES STRUCTURE A.Y. 2021 – 2022

## B.Sc.

| SR. NO | FEES HEAD                      | F.Y.           | S.Y.           | T.Y.           |
|--------|--------------------------------|----------------|----------------|----------------|
| 1      | ADMISSION PROCESSING FEE       | 200.00         | 200.00         | 200.00         |
| 2      | TUITION FEE                    | 800.00         | 800.00         | 800.00         |
| 3      | LABORATORY FEE                 | 800.00         | 800.00         | 800.00         |
| 4      | LIBRARY FEE                    | 200.00         | 200.00         | 200.00         |
| 5      | GYMKHANA FEE                   | 400.00         | 400.00         | 400.00         |
| 6      | OTHER FEE/EXTRA CURR. ACT      | 250.00         | 250.00         | 250.00         |
| 7      | ENROLMENT FEE                  | 220.00         | 0.00           | 0.00           |
| 8      | EXAMINATION FEE                | 2100.00        | 2100.00        | 0.00           |
| 9      | IDENTITY CARD                  | 50.00          | 50.00          | 50.00          |
| 10     | UNIVERSITY SPORTS CUL. ACT     | 30.00          | 30.00          | 30.00          |
| 11     | E-CHARGE                       | 20.00          | 20.00          | 20.00          |
| 12     | D.R. FUND                      | 10.00          | 10.00          | 10.00          |
| 13     | MAGAZINE FEE                   | 100.00         | 100.00         | 100.00         |
| 14     | GROUP INSURANCE                | 125.00         | 125.00         | 125.00         |
| 15     | S.W. FUND                      | 50.00          | 50.00          | 50.00          |
| 16     | UTILITY FEE                    | 250.00         | 250.00         | 250.00         |
| 17     | DEVELOPMENT FUND               | 500.00         | 500.00         | 500.00         |
| 18     | LABORATORY DEPOSIT             | 400.00         | 0.00           | 0.00           |
| 19     | CAUTION MONEY                  | 150.00         | 0.00           | 0.00           |
| 20     | LIBRARY DEPOSIT                | 250.00         | 0.00           | 0.00           |
| 21     | V.C. FUND                      | 20.00          | 20.00          | 20.00          |
| 22     | E-SUVIDHA                      | 50.00          | 50.00          | 50.00          |
| 23     | N.S.S.                         | 10.00          | 10.00          | 10.00          |
| 24     | MARKSHEET FEE                  | 100.00         | 100.00         | --             |
| 25     | ALUMNI ASSOCIATION             | 25.00          | 25.00          | 25.00          |
| 26     | NSS (EKAK YOZANA FEE)          | 10.00          | 10.00          | 10.00          |
| 27     | E.R.P CHARGES                  | 140.00         | 140.00         | 140.00         |
| *      | <b>TOTAL</b>                   | <b>7260.00</b> | <b>6240.00</b> | <b>4040.00</b> |
|        | *New Admission to S.Y. Classes | 0.00           | 800.00         | 0.00           |
|        | *New Admission to T.Y. Classes | 0.00           | 0.00           | 800.00         |

## B.Sc. (Biotechnology)

| SR. NO | FEES HEAD                      | F.Y.            | S.Y.            | T.Y.            |
|--------|--------------------------------|-----------------|-----------------|-----------------|
| 1      | ADMISSION FEE                  | 200.00          | 200.00          | 200.00          |
| 2      | TUITION FEE                    | 16000.00        | 18000.00        | 20000.00        |
| 3      | LABORATORY FEE                 | 4000.00         | 4000.00         | 4000.00         |
| 4      | LIBRARY FEE                    | 600.00          | 600.00          | 600.00          |
| 5      | GYMKHANA FEE                   | 400.00          | 400.00          | 400.00          |
| 6      | OTHER FEE                      | 250.00          | 250.00          | 250.00          |
| 7      | ENROLLMENT FEES                | 220.00          | 0.00            | 0.00            |
| 8      | EXAMINATION FEE                | 1260.00         | 1260.00         | 0.00            |
| 9      | LABORATORY DEPOSIT             | 400.00          | 0.00            | 0.00            |
| 10     | MARKSHEET                      | 50.00           | 50.00           | 50.00           |
| 11     | IDENTITY CARD                  | 50.00           | 50.00           | 50.00           |
| 12     | UNIVERSITY SPORTS CUL. ACT     | 30.00           | 30.00           | 30.00           |
| 13     | CAUTION MONEY                  | 150.00          | 0.00            | 0.00            |
| 14     | LIBRARY DEPOSIT                | 250.00          | 0.00            | 0.00            |
| 15     | MAGAZINE FEE                   | 100.00          | 100.00          | 100.00          |
| 16     | GROUP INSURANCE                | 125.00          | 125.00          | 125.00          |
| 17     | S.W. FUND                      | 50.00           | 50.00           | 50.00           |
| 18     | UTILITY FEE                    | 250.00          | 250.00          | 250.00          |
| 19     | DEVELOPMENT FUND               | 500.00          | 500.00          | 500.00          |
| 20     | COMPUTER FEE                   | 1000.00         | 1000.00         | 1000.00         |
| 21     | V.C. FUND                      | 20.00           | 20.00           | 20.00           |
| 22     | E-SUVIDHA                      | 50.00           | 50.00           | 50.00           |
| 23     | PROJECT FEE                    | 2000.00         | 2000.00         | 2000.00         |
| 24     | E-CHARGE                       | 20.00           | 20.00           | 20.00           |
| 25     | D.R. FUND                      | 10.00           | 10.00           | 10.00           |
| 26     | N.S.S.                         | 10.00           | 10.00           | 10.00           |
| 27     | INDUSTRIAL VISIT               | 500.00          | 500.00          | 500.00          |
| 28     | DOCUMENT VERIFICATION FEES     | 400.00          | 400.00          | 400.00          |
| 29     | MARKSHEET FEE                  | 100.00          | 100.00          | --              |
| 30     | ALUMNI ASSOCIATION             | 25.00           | 25.00           | 25.00           |
| 31     | NSS (EKAK YOZANA FEE)          | 10.00           | 10.00           | 10.00           |
| 32     | E.R.P CHARGES                  | 140.00          | 140.00          | 140.00          |
| *      | <b>TOTAL</b>                   | <b>29170.00</b> | <b>30150.00</b> | <b>30790.00</b> |
|        | *New Admission to S.Y. Classes | 0.00            | 800.00          | 0.00            |
|        | *New Admission to T.Y. Classes | 0.00            | 0.00            | 800.00          |

# FEES STRUCTURE A.Y. 2021 – 2022

## M.Sc. (CHEMISTRY)

| SR. NO | FEES HEAD                    | M.Sc. - I       | M.Sc. - II      |
|--------|------------------------------|-----------------|-----------------|
| 1      | ADMISSION PROCESSING FEE     | 200.00          | 200.00          |
| 2      | POST GRADUATE TUITION FEE    | 1000.00         | 1000.00         |
| 3      | LABORATORY FEE               | 6000.00         | 6000.00         |
| 4      | LIBRARY FEE                  | 1000.00         | 1000.00         |
| 5      | GYMKHANA FEE                 | 400.00          | 400.00          |
| 6      | OTHER FEE/EXTRA CURR. ACT    | 250.00          | 250.00          |
| 7      | CAUTION MONEY                | 150.00          | 0.00            |
| 8      | LIBRARY DEPOSIT              | 250.00          | 0.00            |
| 9      | IDENTITY CARD                | 50.00           | 50.00           |
| 10     | UNIVERSITY SPORTS CUL. ACT   | 30.00           | 30.00           |
| 11     | MAGAZINE FEE                 | 100.00          | 100.00          |
| 12     | GROUP INSURANCE              | 125.00          | 125.00          |
| 13     | S.W. FUND                    | 50.00           | 50.00           |
| 14     | UTILITY FEE                  | 250.00          | 250.00          |
| 15     | DEVELOPMENT FUND             | 500.00          | 500.00          |
| 16     | COMPUTER FEE                 | 500.00          | 500.00          |
| 17     | V.C. FUND                    | 20.00           | 20.00           |
| 18     | E-SUVIDHA                    | 50.00           | 50.00           |
| 19     | E-CHARGE                     | 20.00           | 20.00           |
| 20     | D.R. FUND                    | 10.00           | 10.00           |
| 21     | REGISTRATION & FORM FEE      | 1025.00         | 0.00            |
| 22     | N.S.S.                       | 20.00           | 20.00           |
| 23     | LABORATORY DEPOSIT           | 400.00          | 0.00            |
|        | E.R.P CHARGES                | 140.00          | 140.00          |
| *      | <b>TOTAL</b>                 | <b>12540.00</b> | <b>10715.00</b> |
|        | *New Admission to M.Sc. – II | 0.00            | 800.00          |

## M.Sc. (Physics)

| SR. NO | FEES HEAD                               | M.Sc. - I       | M.Sc. - II      |
|--------|---|-----------------|-----------------|
| 1      | TUITION FEE                             | 15000.00        | 15000.00        |
| 2      | OTHER FEE/EXTRA CURR. ACT               | 250.00          | 250.00          |
| 3      | LABORATORY FEE                          | 5000.00         | 5000.00         |
| 4      | LIBRARY FEES                            | 1000.00         | 1000.00         |
| 5      | GYMKHANA                                | 400.00          | 400.00          |
| 6      | ADMISSION PROCESSING FEE                | 200.00          | 200.00          |
| 7      | VICE CHANCELLORS FUND                   | 20.00           | 20.00           |
| 8      | MAGAZINE                                | 100.00          | 100.00          |
| 9      | IDENTITY CARD                           | 50.00           | 50.00           |
| 10     | GROUP INSURANCE                         | 125.00          | 125.00          |
| 11     | STUDENT WELFARE                         | 50.00           | 50.00           |
| 12     | UNIVERSITY SPORTS & CULTURAL ACTIVITIES | 30.00           | 30.00           |
| 13     | DEVELOPMENT FEE                         | 500.00          | 500.00          |
| 14     | UTILITY                                 | 250.00          | 250.00          |
| 15     | COMPUTER / INTERNET                     | 500.00          | 500.00          |
| 16     | E-SUVIDHA                               | 50.00           | 50.00           |
| 17     | E-CHARGE                                | 20.00           | 20.00           |
| 18     | DISASTER RELIEF FUND                    | 10.00           | 10.00           |
| 19     | NSS                                     | 20.00           | 20.00           |
| 20     | CAUTION MONEY                           | 150.00          | 0.00            |
| 21     | LIBRARY DEPOSITS                        | 250.00          | 0.00            |
| 22     | LABORATORY DEPOSIT                      | 400.00          | 0.00            |
| 23     | REGISTRATION FEE & FORM FEE             | 1025.00         | 0.00            |
| 24     | E.R.P CHARGES                           | 140.00          | 140.00          |
| *      | <b>TOTAL</b>                            | <b>25540.00</b> | <b>23715.00</b> |
|        | *New Admission to M.Sc. – II            | 0.00            | 800.00          |

# FEES STRUCTURE A.Y. 2021 – 2022

## M.Sc. (Computer Science) & M.Sc. (Information Technology)

| SR. NO | FEES HEAD                           | M.Sc. - I       | M.Sc. - II      |
|--------|-------------------------------------|-----------------|-----------------|
| 1      | CAUTION MONEY                       | 150.00          | 0.00            |
| 2      | TUITION FEE                         | 15000.00        | 15000.00        |
| 3      | LABORATORY FEE                      | 15000.00        | 15000.00        |
| 4      | LIBRARY FEE                         | 1000.00         | 1000.00         |
| 5      | GYMKHANA FEE                        | 400.00          | 400.00          |
| 6      | OTHER FEE/EXTRA CURR. ACT           | 250.00          | 250.00          |
| 7      | LABORATORY DEPOSIT                  | 400.00          | 0.00            |
| 8      | LIBRARY DEPOSIT                     | 250.00          | 0.00            |
| 9      | IDENTITY CARD                       | 50.00           | 50.00           |
| 10     | UNIVERSITY SPORTS CUL. ACT          | 30.00           | 30.00           |
| 11     | MAGAZINE FEE                        | 100.00          | 100.00          |
| 12     | GROUP INSURANCE                     | 125.00          | 125.00          |
| 13     | S.W. FUND                           | 50.00           | 50.00           |
| 14     | UTILITY FEE                         | 250.00          | 250.00          |
| 15     | DEVELOPMENT FUND                    | 500.00          | 500.00          |
| 16     | ADMISSION PROCESSING FEE            | 200.00          | 200.00          |
| 17     | V.C. FUND                           | 20.00           | 20.00           |
| 18     | E-SUVIDHA                           | 50.00           | 50.00           |
| 19     | E-CHARGE                            | 20.00           | 20.00           |
| 20     | D.R. FUND                           | 10.00           | 10.00           |
| 21     | REGISTRATION & FORM FEE             | 25.00           | 0.00            |
| 22     | REGISTRATION FEE                    | 1000.00         | 0.00            |
| 23     | N.S.S.                              | 20.00           | 20.00           |
| 24     | PROJECT                             | 0.00            | 1000.00         |
| 25     | E.R.P CHARGES                       | 140.00          | 140.00          |
| *      | <b>TOTAL</b>                        | <b>35040.00</b> | <b>34215.00</b> |
|        | <b>*New Admission to M.Sc. – II</b> | 0.00            | 800.00          |

## M.Sc. (Biotechnology)

| SR. NO | FEES HEAD                           | M.Sc. - I       | M.Sc. - II      |
|--------|-------------------------------------|-----------------|-----------------|
| 1      | TUITION FEE                         | 15000.00        | 15000.00        |
| 2      | LABORATORY FEE                      | 20000.00        | 15000.00        |
| 3      | LIBRARY FEE                         | 1000.00         | 1000.00         |
| 4      | GYMKHANA FEE                        | 400.00          | 400.00          |
| 5      | OTHER FEE/EXTRA CURR. ACT           | 250.00          | 250.00          |
| 6      | PROJECT FEE                         | 2000.00         | 2000.00         |
| 7      | COMPUTER FEE                        | 500.00          | 500.00          |
| 8      | IDENTITY CARD                       | 50.00           | 50.00           |
| 9      | UNIVERSITY SPORTS CUL. ACT          | 30.00           | 30.00           |
| 10     | MAGAZINE FEE                        | 100.00          | 100.00          |
| 11     | GROUP INSURANCE                     | 125.00          | 125.00          |
| 12     | S.W. FUND                           | 50.00           | 50.00           |
| 13     | UTILITY FEE                         | 250.00          | 250.00          |
| 14     | DEVELOPMENT FUND                    | 500.00          | 500.00          |
| 15     | ADMISSION PROCESSING FEE            | 200.00          | 200.00          |
| 16     | V.C. FUND                           | 20.00           | 20.00           |
| 17     | E-SUVIDHA                           | 50.00           | 50.00           |
| 18     | E-CHARGE                            | 20.00           | 20.00           |
| 19     | D.R. FUND                           | 10.00           | 10.00           |
| 20     | REGISTRATION FEES                   | 1000.00         | 0.00            |
| 21     | FORM FEE                            | 25.00           | 0.00            |
| 22     | N.S.S.                              | 20.00           | 20.00           |
| 23     | CAUTION MONEY                       | 150.00          | 0.00            |
| 24     | LIBRARY DEPOSITS                    | 250.00          | 0.00            |
| 25     | LABORATORY DEPOSIT                  | 400.00          | 0.00            |
|        | E.R.P CHARGES                       | 140.00          | 140.00          |
| *      | <b>TOTAL</b>                        | <b>42540.00</b> | <b>35715.00</b> |
|        | <b>*New Admission to M.Sc. – II</b> | 0.00            | 800.00          |

# FEES STRUCTURE A.Y. 2021 – 2022

## B.Sc. (Computer Science)

| SR. NO | FEES HEAD                      | F.Y.            | S.Y.            | T.Y.            |
|--------|--------------------------------|-----------------|-----------------|-----------------|
| 1      | ADMISSION FEE                  | 200.00          | 200.00          | 200.00          |
| 2      | TUTION FEE                     | 16000.00        | 18000.00        | 20000.00        |
| 3      | LABORATORY FEE                 | 3000.00         | 3000.00         | 3000.00         |
| 4      | LIBRARY FEE                    | 600.00          | 600.00          | 600.00          |
| 5      | GYMKHANA FEE                   | 400.00          | 400.00          | 400.00          |
| 6      | OTHER FEE                      | 250.00          | 250.00          | 250.00          |
| 7      | ENROLLMENT FEES                | 220.00          | 0.00            | 0.00            |
| 8      | EXAMINATION FEES               | 1260.00         | 1260.00         | 0.00            |
| 9      | LABORATORY DEPOSIT             | 400.00          | 0.00            | 0.00            |
| 10     | MARKSHEET                      | 50.00           | 50.00           | 50.00           |
| 11     | IDENTITY CARD                  | 50.00           | 50.00           | 50.00           |
| 12     | UNIVERSITY SPORTS CUL. ACT     | 30.00           | 30.00           | 30.00           |
| 13     | CAUTION MONEY                  | 150.00          | 0.00            | 0.00            |
| 14     | LIBRARY DEPOSIT                | 250.00          | 0.00            | 0.00            |
| 15     | MAGAZINE FEE                   | 100.00          | 100.00          | 100.00          |
| 16     | GROUP INSURANCE                | 125.00          | 125.00          | 125.00          |
| 17     | S.W. FUND                      | 50.00           | 50.00           | 50.00           |
| 18     | UTILITY FEE                    | 250.00          | 250.00          | 250.00          |
| 19     | DEVELOPMENT FUND               | 500.00          | 500.00          | 500.00          |
| 20     | COMPUTER FEES                  | 2000.00         | 2000.00         | 2000.00         |
| 21     | V.C. FUND                      | 20.00           | 20.00           | 20.00           |
| 22     | E-SUVIDHA                      | 50.00           | 50.00           | 50.00           |
| 23     | PROJECT FEE                    | 2000.00         | 2000.00         | 2000.00         |
| 24     | E-CHARGE                       | 20.00           | 20.00           | 20.00           |
| 25     | D.R. FUND                      | 10.00           | 10.00           | 10.00           |
| 26     | N.S.S.                         | 10.00           | 10.00           | 10.00           |
| 27     | INDUSTRIAL VISIT               | 500.00          | 500.00          | 500.00          |
| 28     | DOCUMENT VERIFICATION FEES     | 400.00          | 400.00          | 400.00          |
| 29     | MARKSHEET FEE                  | 100.00          | 100.00          | --              |
| 30     | ALUMNI ASSOCIATION             | 25.00           | 25.00           | 25.00           |
| 31     | NSS (EKAK YOZANA FEE)          | 10.00           | 10.00           | 10.00           |
| 32     | E.R.P CHARGES                  | 140.00          | 140.00          | 140.00          |
| *      | <b>TOTAL</b>                   | <b>29170.00</b> | <b>30150.00</b> | <b>30790.00</b> |
|        | *New Admission to S.Y. Classes | 0.00            | 800.00          | 0.00            |
|        | *New Admission to T.Y. Classes | 0.00            | 0.00            | 800.00          |

## B.Sc. (Information Technology)

| SR. NO | FEES HEAD                      | F.Y.            | S.Y.            | T.Y.            |
|--------|--------------------------------|-----------------|-----------------|-----------------|
| 1      | ADMISSION FEE                  | 200.00          | 200.00          | 200.00          |
| 2      | TUTION FEE                     | 10000.00        | 10000.00        | 10000.00        |
| 3      | LABORATORY FEE                 | 6000.00         | 6000.00         | 6000.00         |
| 4      | LIBRARY FEE                    | 1200.00         | 1200.00         | 1200.00         |
| 5      | GYMKHANA FEE                   | 400.00          | 400.00          | 400.00          |
| 6      | OTHER FEES                     | 250.00          | 250.00          | 250.00          |
| 7      | ENROLLMENT FEES                | 220.00          | 0.00            | 0.00            |
| 8      | EXAMINATION FEES               | 1260.00         | 1260.00         | 0.00            |
| 9      | LABORATORY DEPOSIT             | 400.00          | 0.00            | 0.00            |
| 10     | MARKSHEET                      | 50.00           | 50.00           | 50.00           |
| 11     | IDENTITY CARD                  | 50.00           | 50.00           | 50.00           |
| 12     | UNIVERSITY SPORTS CUL. ACT     | 30.00           | 30.00           | 30.00           |
| 13     | CAUTION MONEY                  | 150.00          | 0.00            | 0.00            |
| 14     | LIBRARY DEPOSIT                | 250.00          | 0.00            | 0.00            |
| 15     | MAGAZINE FEE                   | 100.00          | 100.00          | 100.00          |
| 16     | GROUP INSURANCE                | 125.00          | 125.00          | 125.00          |
| 17     | S.W. FUND                      | 50.00           | 50.00           | 50.00           |
| 18     | UTILITY FEE                    | 250.00          | 250.00          | 250.00          |
| 19     | DEVELOPMENT FUND               | 500.00          | 500.00          | 500.00          |
| 20     | COMPUTER FEES                  | 1000.00         | 1500.00         | 2500.00         |
| 21     | V.C. FUND                      | 20.00           | 20.00           | 20.00           |
| 22     | E-SUVIDHA                      | 50.00           | 50.00           | 50.00           |
| 23     | PROJECT FEE                    | 1000.00         | 1000.00         | 1900.00         |
| 24     | E-CHARGE                       | 20.00           | 20.00           | 20.00           |
| 25     | D.R. FUND                      | 10.00           | 10.00           | 10.00           |
| 26     | N.S.S.                         | 10.00           | 10.00           | 10.00           |
| 27     | INDUSTRIAL VISIT               | 500.00          | 500.00          | 500.00          |
| 28     | DOCUMENT VERIFICATION FEES     | 00.00           | 00.00           | 00.00           |
| 29     | MARKSHEET FEE                  | 100.00          | 100.00          | --              |
| 30     | ALUMNI ASSOCIATION             | 25.00           | 25.00           | 25.00           |
| 31     | NSS (EKAK YOZANA FEE)          | 10.00           | 10.00           | 10.00           |
| 32     | E.R.P CHARGES                  | 140.00          | 140.00          | 140.00          |
| *      | <b>TOTAL</b>                   | <b>24370.00</b> | <b>23850.00</b> | <b>24390.00</b> |
|        | *New Admission to S.Y. Classes | 0.00            | 800.00          | 0.00            |
|        | *New Admission to T.Y. Classes | 0.00            | 0.00            | 800.00          |

# FEES STRUCTURE A.Y. 2021 – 2022

## B.M.S.

| SR. NO | FEES HEAD                      | F.Y.            | S.Y.            | T.Y.            |
|--------|--------------------------------|-----------------|-----------------|-----------------|
| 1      | ADMISSION PROCESSING FEE       | 200.00          | 200.00          | 200.00          |
| 2      | TUITION FEE                    | 10000.00        | 10000.00        | 10000.00        |
| 3      | LABORATORY FEE                 | 1000.00         | 1000.00         | 1000.00         |
| 4      | LIBRARY FEE                    | 300.00          | 300.00          | 300.00          |
| 5      | GYMKHANA FEE                   | 400.00          | 400.00          | 400.00          |
| 6      | OTHER FEE/EXTRA CURR. ACT      | 250.00          | 250.00          | 250.00          |
| 7      | IDENTITY CARD                  | 50.00           | 50.00           | 50.00           |
| 8      | UNIVERSITY SPORTS CUL. ACT     | 30.00           | 30.00           | 30.00           |
| 9      | MAGAZINE FEE                   | 100.00          | 100.00          | 100.00          |
| 10     | GROUP INSURANCE                | 125.00          | 125.00          | 125.00          |
| 11     | S.W. FUND                      | 50.00           | 50.00           | 50.00           |
| 12     | UTILITY FEE                    | 250.00          | 250.00          | 250.00          |
| 13     | DEVELOPMENT FUND               | 500.00          | 500.00          | 500.00          |
| 14     | COMPUTER FEE                   | 1000.00         | 1000.00         | 1000.00         |
| 15     | V.C. FUND                      | 20.00           | 20.00           | 20.00           |
| 16     | E-SUVIDHA                      | 50.00           | 50.00           | 50.00           |
| 17     | E-CHARGE                       | 20.00           | 20.00           | 20.00           |
| 18     | D.R. FUND                      | 10.00           | 10.00           | 10.00           |
| 19     | INDUSTRIAL VISIT FEE           | 500.00          | 500.00          | 500.00          |
| 20     | LABORATORY DEPOSIT             | 400.00          | 0.00            | 0.00            |
| 21     | CAUTION MONEY                  | 150.00          | 0.00            | 0.00            |
| 22     | LIBRARY DEPOSIT                | 250.00          | 0.00            | 0.00            |
| 23     | EXAMINATION FEE                | 2772.00         | 2772.00         | 0.00            |
| 24     | ENROLMENT FEE                  | 220.00          | 0.00            | 0.00            |
| 25     | N.S.S.                         | 10.00           | 10.00           | 10.00           |
| 26     | PROJECT FEES                   | 00.00           | 00.00           | 500.00          |
| 27     | MARKSHEET FEE                  | 100.00          | 100.00          | 00.00           |
| 28     | ALUMNI ASSOCIATION             | 25.00           | 25.00           | 25.00           |
| 29     | NSS (EKAK YOZANA FEE)          | 10.00           | 10.00           | 10.00           |
| 30     | E.R.P CHARGES                  | 140.00          | 140.00          | 140.00          |
| *      | <b>TOTAL</b>                   | <b>18932.00</b> | <b>17912.00</b> | <b>15540.00</b> |
|        | *New Admission to S.Y. Classes | 0.00            | 800.00          | 0.00            |
|        | *New Admission to T.Y. Classes | 0.00            | 0.00            | 800.00          |

## B.M.M.

| SR. NO | FEES HEAD                      | F.Y.            | S.Y.            | T.Y.            |
|--------|--------------------------------|-----------------|-----------------|-----------------|
| 1      | ADMISSION PROCESSING FEE       | 200.00          | 200.00          | 200.00          |
| 2      | TUITION FEE                    | 10000.00        | 10000.00        | 10000.00        |
| 3      | LABORATORY FEE                 | 1000.00         | 1000.00         | 1000.00         |
| 4      | LIBRARY FEE                    | 300.00          | 300.00          | 300.00          |
| 5      | GYMKHANA FEE                   | 400.00          | 400.00          | 400.00          |
| 6      | OTHER FEE/EXTRA CURR. ACT      | 250.00          | 250.00          | 250.00          |
| 7      | ENROLMENT FEE                  | 220.00          | 0.00            | 0.00            |
| 8      | EXAMINATION FEE                | 2772.00         | 2772.00         | 0.00            |
| 9      | LABORATORY DEPOSIT             | 400.00          | 0.00            | 0.00            |
| 10     | IDENTITY CARD                  | 50.00           | 50.00           | 50.00           |
| 11     | UNIVERSITY SPORTS CUL. ACT     | 30.00           | 30.00           | 30.00           |
| 12     | CAUTION MONEY                  | 150.00          | 0.00            | 0.00            |
| 13     | LIBRARY DEPOSIT                | 250.00          | 0.00            | 0.00            |
| 14     | MAGAZINE FEE                   | 100.00          | 100.00          | 100.00          |
| 15     | GROUP INSURANCE                | 125.00          | 125.00          | 125.00          |
| 16     | S.W. FUND                      | 50.00           | 50.00           | 50.00           |
| 17     | UTILITY FEE                    | 250.00          | 250.00          | 250.00          |
| 18     | DEVELOPMENT FUND               | 500.00          | 500.00          | 500.00          |
| 19     | COMPUTER FEE                   | 1000.00         | 1000.00         | 1000.00         |
| 20     | V.C. FUND                      | 20.00           | 20.00           | 20.00           |
| 21     | E-SUVIDHA                      | 50.00           | 50.00           | 50.00           |
| 22     | E-CHARGE                       | 20.00           | 20.00           | 20.00           |
| 23     | D.R. FUND                      | 10.00           | 10.00           | 10.00           |
| 24     | INDUSTRIAL VISIT FEE           | 500.00          | 500.00          | 500.00          |
| 25     | N.S.S.                         | 10.00           | 10.00           | 10.00           |
| 26     | MARKSHEET FEE                  | 100.00          | 100.00          | 00.00           |
| 27     | PROJECT FEES                   | 00.00           | 00.00           | 500.00          |
| 28     | ALUMNI ASSOCIATION             | 25.00           | 25.00           | 25.00           |
| 29     | NSS (EKAK YOZANA FEE)          | 10.00           | 10.00           | 10.00           |
|        | E.R.P CHARGES                  | 140.00          | 140.00          | 140.00          |
| *      | <b>TOTAL</b>                   | <b>18932.00</b> | <b>17912.00</b> | <b>15540.00</b> |
|        | *New Admission to S.Y. Classes | 0.00            | 800.00          | 0.00            |
|        | *New Admission to T.Y. Classes | 0.00            | 0.00            | 800.00          |

# RULES & REGULATIONS

## DISCIPLINE

Students are expected to be on their best behaviour in the college, especially in the class room, courteous to all and polite to teachers.

Students should avoid loitering in the corridors, sitting on staircases and converging at the corners. Care should be taken not to damage the furniture and belongings of the college. College premises, building as well as classes must be kept neat and tidy. Edibles (including chewing gum or mouth fresheners), consumption of alcoholic beverages, smoking and spitting are strictly prohibited in the college premises.

Students should strive to maintain the secular and harmonious atmosphere of the college by refraining from indulging in any type of religious, communal or political activities in the college premises. If a student's behavior is found to be detrimental to the best interest or discipline of the college, the Principal may direct such a student to leave the college without assigning any reason. The Principal's decision in this matter is final and binding on the defaulter.

Insubordination, use of abusive language of any kind and violation of any code of conduct of the educational institution will be considered as enough and sufficient cause for the expulsion of the student.

Use of mobile or cellular phones in the premises of the college other than the college canteen and open space outside building is strictly prohibited. As per the circular issued by the University of Mumbai No. UG/552 of 2004.

## ATTENDANCE

Regular attendance in the College is compulsory. If a student is absent from the College continuously for more than 20 working days without any valid prior written intimation to the Principal or Vice-Principal (Degree College), the student is liable to have his/her name deleted from the Roll Call and General Register. Generally no re-admission is granted to such students.

As per university ordinance 0.119 a student must attend lectures and practicals on 3/4th of the days on which lectures and practicals are conducted in each term. The minimum attendance necessary for being eligible to appear for the examination is 75% of the working days of each term taken separately, day's attendance means attendance in all lectures, tutorials, and practicals. A student, whose attendance does not meet the above requirement of 75%, is liable to be debarred from the examination.

Parents are called as and when required to clarify the reasons for the poor in attendance of their ward. It is

compulsory for parents of defaulting students to be present during the filling of examination forms.

As per university ordinance 0.125 for grant of terms of an academic year, it is mandatory on part of the student to complete the course study to the satisfaction of the Principal/Head of the Institution.

If a student fails to abide by the above-mentioned ordinances, his/her terms may not be granted and hence he/she will not be considered eligible to appear for term/final examinations.

## EXAMINATION

It is mandatory that every student fills up an examination form for internal class test and semester exam. This will be as per the instructions displayed on the college notice board as well as website at least 10 days prior to the commencement of the exam. Students defaulting in attendance are required to bring their parents at the time of filling the examination form.

## IDENTITY CARD

The College issues Identity & Library Cards to each and every bonafide student at the beginning of the academic year, which is valid only for that particular academic year. If a student cancels the admission from the college, these cards and any other document or books belonging to the college must be surrendered along with the fee receipt, before applying for the Leaving Certificate. If a student misplaces or loses the Identity Card, it must be brought to the notice of the Principal immediately. If reasons for the loss are found excusable a duplicate Identity Card is issued to the student on a written request. Such student is levied a fine of Rs. 100/- for the same. If deemed necessary the student may be required to file an FIR for this loss. Students are requested to wear the Identity Card around their neck, every day, in the college premises. This is not only a valid document for the entry to the college, but also for the examinations, library, laboratory, and classrooms and in fact anywhere in the college campus. Students are required to produce the identitycard for random checking and verification by the staff members of the college. If asked for, the student must even surrender the identity Card to them courteously. Identity Card must be complete in all respects otherwise it will be treated as invalid.

## CODE OF CONDUCT TO BE OBSERVED BY STUDENTS

1. The Campus must be kept clean. All garbage/waste must be thrown in the dustbins.
2. No smoking, spitting, eating or chewing gum anywhere in the college premises.
3. Resting feet on the wall is prohibited.

# RULES & REGULATIONS

4. No loitering around in the corridors when the lectures are on.
5. Identity cards must be worn around the neck at all times while on the campus.
6. Students bearing in valid identity cards will be considered as non Bonafide.
7. Total silence must be observed in the library.
8. Sitting on cars or vehicles parked in the college campus is prohibited.
9. Students shall do nothing either inside or outside the college that will in any way interfere with its orderly conduct and discipline.
10. No student shall collect any money or contribution for picnic trip, education visit to some place, get together, study notes, charity or any other activity without prior sanction of the Principal.
11. Students should not take part in any intercollegiate events without the prior permission of the Principal.
12. No student shall communicate any information or write about matters dealing with the college administration to the press/ media without prior permission of the principal.
13. Matters not covered by the existing rules will rest at the absolute discretion of the Principal / Head of the institution.
14. Students are expected to come decently dressed.
15. Students are strictly prohibited from bringing any outsider to the college campus without prior written permission.
16. Students should observe and read information displayed on Notice Boards on a regular/daily basis in order to be informed/updated about instructions and information displayed for their benefit.
17. Students should deposit any lost property found by them in the college office. Owners of lost property should claim the same from the office counter with proper identification the very next day.
18. Use of mobile phone in class room / laboratory / corridor is strictly prohibited. Strict disciplinary action will be taken against defaulting students which shall include confiscation of the, mobile, fine and any other punitive measures as decided from time to time by the college administration.
19. As per the Supreme Court ruling,
  - i) Ragging in any form would be met with exemplary punishment.
  - ii) A student, if found guilty of ragging, would be expelled from the college.
  - iii) A student, if found guilty of ragging earlier, would not be admitted.
20. Any other instruction issued from time to time by the college authorities.

**Note:** Any violation of the code of conduct will entail strict disciplinary action against the student

## PROCEDURE TO BE ADOPTED BY THE STUDENTS WHO TAKE PART IN SPORTS

If a student takes part in any sport event National/State/District/University or any sports meet organized by a recognized body such as District Sports Authority/Sports Authority of India etc. he/she must forward a written application detailing the event / date etc. to the Principal. This must be attested by the Physical Instructor/Sports in - Charge. If possible valid document such as copy of entry form/ participation certificate/ merit certificate must be attached with the application form. A copy of this application form must be submitted to the Supervisor/ Prof. Charge of the examination, at the earliest, without any delay once the examination schedule is announced. Otherwise any benefit applicable to the students of sports category with respect to attendance in supplementary examination cannot be extended. The concerned student and the parents are responsible for following this procedure.

## NOTE TO PARENTS

Attention of Parents / Guardian is drawn to the fact that without their help and co-operation not much result can be expected in our endeavor to improve children's behavior and mould them into good citizens. The coming years of their life are crucial not only to them but also to all of us and to the society.

Growing up has its problems, physical, psychological and emotional. Children are going through tempestuous phases of teen life and are adjusting to rapid developments in their bodies as well as a new mental make-up. They may assert their new found independence, form their own opinions and views. Allow them to do so, but you must understand deep inside they are still children, young in mind, inexperienced, unsure of themselves, making plans and aspirations and desperately seeking reassurance and recognition. As parents, you need to be best friends of your children. They should feel free to talk to you about their problems, feel good enough to share their thoughts with you, should be assured that through you they can nurture their dreams. Convince them that they are safe with you and encourage them to open their minds to you and promise them that you will never let them down but will listen and understand and will be ever ready to address their problems. If you do not take this cardinal step they will go somewhere else to seek opinions, suggestions and advice, the result of which many a times is misleading or disastrous. Give them the support and encouragement. They need to go where their hearts take them, or where their minds lead them but at the same time be there for them as their guide just in case things do not work out. Be their refuge, if things go wrong, but make sure your ambitions do not overshadow their desires, your assertions do not kill their aspirations!

# EXAMINATION RULES UNDER CBSGS

## F.Y. / S.Y. Examinations Shall Be Held By The College - On Behalf Of The University.

### Semester RULE-8453: THE SCHEME OF EXAMINATION FOR FACULTY OF ARTS, SCIENCE & COMMERCE

#### For Aided Section

- All First Year (Semester I and II) Courses (except foundation course) effective from AY 2016-2017

| Theory Examination Pattern(Duration of exam) | Project Examination Pattern |
|--|-----------------------------|
| 100 marks (3 hours)                          | ---                         |

- All First Year (Semester I and II) Foundation Course effective from AY 2016-2017

| Theory Examination Pattern(Duration of exam) | Project Examination Pattern |
|--|-----------------------------|
| 75 marks (2 ½ hours)                         | 25 marks                    |

- All Second Year (Semester III and IV) Courses (except foundation course) effective from AY 2017-2018

| Theory Examination Pattern(Duration of exam) | Project Examination Pattern |
|--|-----------------------------|
| 100 marks (3 hours)                          | ---                         |

- All First Year (Semester III and IV) Foundation Course effective from AY 2016-2017

| Theory Examination Pattern(Duration of exam) | Project Examination Pattern |
|--|-----------------------------|
| 75 marks (2 ½ hours)                         | 25 marks                    |

- All Third Year (Semester V and VI) Courses effective from AY 2018-2019

| Theory Examination Pattern(Duration of exam) | Project Examination Pattern |
|--|-----------------------------|
| 100 marks (3 hours)                          | ---                         |

#### For Unaided Section

- All First Year / Second Year / Third (Semester I to VI) Courses effective from AY 2014-2015

| Theory Examination Pattern(Duration of exam) | Project Examination Pattern |
|--|-----------------------------|
| 75 marks (2 ½ hours)                         | 25 marks                    |

## PERFORMANCE GRADING

The Performance Grading of the learners shall be on TEN point ranking system as under:

| Grade | Marks         | Grade Points |
|-------|---------------|--------------|
| O     | 80.00 & above | 10           |
| A+    | 70 to 79.99   | 9            |
| A     | 60 to 69.99   | 8            |
| B+    | 54 to 59.99   | 7            |
| B     | 50 to 54.99   | 6            |
| C     | 45 to 49.99   | 5            |
| D     | 40 to 44.99   | 4            |
| F     | less than 40  | 0            |

The performance grading shall be based on the aggregate performance of Internal Assessment and Semester End Examination.

## R:8437 CARRY FORWARDS OF MARKS IN CASE OF A LEARNER WHO FAILS IN THE INTERNAL ASSESSMENT AND / OR SEMESTER END ASSESSMENT IN ONE OR MORE SUBJECTS

- A learner who PASSES in the Internal Examination but FAILS in the Semester End Examination of the Semester End Examination of that course. However his / her marks of the Internal Examinations shall be carried over and he /she shall be entitled for grade obtained by him / her on passing.
- A learner who PASSES in the Semester End Examination but FAILS in the Internal Assessment of the course shall reappear for the Internal Examination of that course. However his/ her marks of the Semester End Examination shall be carried over and he/she shall be entitled for grade obtained by him/her on passing.
- In case of learner who is reappearing for the Internal Examination, the examination will consist of one project of 25.

## AMENDED R. 8438

Eligibility criteria for a learner, to be admitted in Semester V (Third year) of UG programs (aided and non - aided) in Faculties of Arts and Commerce is amended as follows:

- Shall have passed Semester I, II, III and IV in full **OR**
- Shall have passed Semester I and II in full and secured ATKT in the Second year by failing in not more than Two Courses in each of Semester III and Semester IV **OR**
- Shall have Secured ATKT in First Year by failing in not more than Two Courses in each of Semester I and Semester II and have passed Semester III and Semester IV in full

# EXAMINATION RULES UNDER CBSGS

Eligibility for admission to semester V (Third year) of UG programs (aided and non - aided) in Faculty of Science is amended as follows,

1. Learner shall have passed Semester I, II, III and IV in full **OR**
2. Learner shall have passed Semester I and Semester II in full and secured ATKT in Second Year by failing in For programs with 900 and above marks in not more than Three Courses in each of Semester III and IV For programs with less than 900 marks in not more than Three Courses with not more than total 200 marks in each of Semester III & IV **OR**
3. Learner shall have passed Semester III and Semester IV in full and secured ATKT in First Year by failing in, For programs with 900 and above marks in not more than Three Courses in each of Semester I and II For programs with less than 900 marks in not more than Three Courses with not more than total 200 marks in each of Semester I & II.

## **R. 8439 ADDITIONAL EXAMINATION**

The additional examination for Semester I, II, III and IV will be conducted only for those students who have remained absent on the ground of medical / participation in Sports/ Cultural/ NCC camps, Coaching Camps for Sports and cultural activities etc. As per R. 8439 (Which was effected from A.Y. 2013 - 14 ) be repelled and earlier ordinance / regulations 8917 may again be brought to effect. a learner who fails in some or all the courses can appear for the ATKT Examinations Which Will be conducted only in the month of October and April of every year for all Semesters i.e. Semesters I,II,III and IV.

## **GRACE MARKS FOR FY & SY CLASS**

**GRACING RULES:** (University Of Mumbai Circular No. VG/278 of 2011 Dt. 25-5-11)

**ORDINANCE O.5042 - A:** Grace Marks passing in each course/ head of Passing (Theory/ Practical/ Oral/ Sessional/ TW External / Semester End Exam / Internal Assessment)

The examinee shall be given the benefit of grace marks only for passing in each course / head of passing (Theory/ Practical / Oral / Sessional/ TW) in External / Semester End Examination or Internal Examination Assessment as follows:

| Head of Passing | Grace Marks |
|-----------------|-------------|
| Upto 50         | 2           |
| 051-100         | 3           |
| 101-150         | 4           |
| 151-200         | 5           |
| 201-250         | 6           |
| 251-300         | 7           |
| 301-350         | 8           |
| 351-400         | 9           |
| 401 & Above     | 10          |

Provided that the benefit of such gracing marks given in different courses/ head of passing shall not exceed 1 % of the aggregate marks in that examination.

Provided further that the benefit of gracing of marks under this Ordinance, shall be applicable only if the candidate passes the entire examination of semester/year.

## **ORDINANCE O.5045-A: CONDONATION**

If a candidate/learner fails in only one course/head of passing, having passed in all other courses/heads of passing, his/her deficiency of marks in such head of passing may be condoned by not more than 1 % of the aggregate marks of the examination or 10% of the total number of marks of that course / head of passing in which he/she is failing, whichever is less. However, condonation, whether in one head of passing or aggregate head of passing be restricted to maximum up to 10 marks only.

**Note:** Gracing rules are applicable only for regular examination. For A.T.K.T. Examination the rules are not applicable.

## **UNFAIR MEANS RESORTED TO BY THE STUDENT**

### **Competent Authority**

- 1) The Board of Examinations of the University constituted under the provisions of Section 31(3) shall be the competent authority to take appropriate disciplinary action against the students using, attempting to use, aiding, abetting, instigating or allowing to use unfair means at the examination conducted by the University.
- 2) The Principal of the constituent College or Head of the Recognised Institution shall be the competent authority to take appropriate disciplinary action against the student/s using, attempting to use, aiding, abetting, instigating or allowing to use unfair means at the examination conducted by the College or Institution on behalf of the University.

# EXAMINATION RULES UNDER CBSGS

**Broad categories of unfair means resorted to by students at the university/college/institution examinations and the quantum of punishment for each category there of (*vide ordinance 5050/CRou/513 500 08 02*)**

1. **Possession of Copying Material:** Annulment of the performance of the student at the University / College / institution examination in full.  
*Note: This quantum of punishment shall apply also to the following categories of malpractice at Sr. No. (2) to Sr. No. (12) in addition to the punishment prescribed there at.*
2. **Actual copying from the copying material:** Exclusion of the student from University or College or Institution examination for one additional examination.
3. **Possession of another student's answerbook:** Exclusion of the student from University or College or Institution examination for one additional examination (*Both the Students*).
4. **Possession of another student's answerbook + actual evidence of copying therefrom:** Exclusion of the student from University or College or Institution examination for two additional examinations (*Both the Students*).
5. **Mutual / Mass copying:** Exclusion of the students from University or College or Institution examination for two additional examinations.
6. i) **Smuggling-out or smuggling-in of answerbook as copying material:** Exclusion of the student from University or College or Institution examination for two additional examinations.  
ii) **Smuggling-in of written answerbook based on the question paper set at the examination:** Exclusion of the student from University or College or Institution examination for three additional examinations.  
iii) **Smuggling-in of written answerbook and forging signature of the Jr. Supervisor thereon:** Exclusion of the student from University or College or Institution examination for four additional examinations.
7. **Attempt to forge the signature of the Jr. Supervisor on the answerbook or supplement:** Exclusion of the student from University or College or Institution examination for four additional examinations.
8. **Interfering with or counterfeiting of University / College / Institution seal, or answerbooks or office stationery used in the examination:** Exclusion of the student from University or College or Institution examination for four additional examinations.
9. **Answerbook, Main or Supplement Written outside the Examination Hall or Any Other Insertion in Answerbook:** Exclusion of the student from University or College or Institution examination for four additional examinations.
10. **Insertion of Currency Notes / to Bribe or Attempting to Bribe Any of The Personnels Connected with the Conduct of Examinations:** Exclusion of the student from University or College or Institution examination for our additional examinations.
11. **Using Abusive Language / Violence / Threat at the Examination Centre by a Student at the University / College / Institution Examination to Jr. / Sr. Supervisors / Chief Conductor or Examiners:** Exclusion of the student from University or College or Institution examination for four additional examinations.
12. **Impersonation at the University/college/institution Examination:** a) Exclusion of the student from University or College or Institution examinations for five additional examinations. (Both the students if impersonator is University or College or Institute Student.)  
b) **Impersonation By A University / College / Institute Student At S.S.C. / H.S.C./ Any Other Examination:** Exclusion of the impersonator from University or College or Institution examination for five additional examinations. Annulment of the performance of the student at the University.
13. **Revealing Identity In Any Form In The Answer Written Or In Any Other Part Of The Answerbook By Student At The University Or College Or Institution Examination:** Annulment of the performance of the should at the University or College of Institution examination in full.
14. **Found Having Written on Palms or on The Body or on the Clothes While in the Examination:** Annulment of the performance of the student at the University or College or Institution examination in full.
15. **All Other Malpractices Not Covered In The Aforesaid Categories:** Annulment of the performance of the student at the University or College or Institution in full, and severe punishment depending upon the gravity of the offence.
16. If on a previous occasion disciplinary action was taken against a student for malpractice used at examination and he/she is caught again for malpractices used at the examination, in this event he / she shall be dealt with severely. Enhanced punishment can be imposed on such students. This enhanced punishment may extend to

# EXAMINATION RULES UNDER CBSGS

double the punishment provided for the offence, when committed at the second or subsequent examination.

**17. Practical / Dissertation / Project Report Examination :** Student involved in malpractices at Practical / Dissertation/Project Report examinations shall be dealt with as per the punishment provided for the theory examination.

18. The Competent Authority, in addition to the above mentioned punishment, may impose a fine on the student declared guilty

**Note:** *the term “annulment of performance in full” includes performance of the student at the theory as well as annual practical examination, but does not include performance at term work, project work and dissertation examination unless malpractice used there at.*

## **RULE - 8448 EX-STUDENTS:**

Learners who are declared failed in one or more courses on account of failure at the Internal Assessment and/or Semester End Examinations or who have been allowed to keep terms for the higher class shall appear as ex-student for the Internal Assessment and/or the Semester End Examination in the failed course at the examinations held by their respective college. Examination for the ex - students will be held at least 15 days prior to the semester End Examination of the next Semester as per the pattern of the course in the respective (failed) semester eg. For a student who fails in the semester end examination in the subject of Foundation course paper I in Semester I the examination for FC paper I of semester I shall be held at least 15 days prior to the conduct of the Semester End Examination for Semester II. The examinations for the ex-students shall be held in every semester.

## **RULES AND PROCEDURE FOR PROVIDING THE PHOTOCOPIES OF ASSESSED ANSWER-BOOK(S) TO THE EXAMINEE & PROCESS OF REVALUATION OF THE ANSWER-BOOK(S)**

*(Directions No. Exam./ Rev./ VCD/ 4637 of 2010 dated 5th April, 2010)*

### **General Rules:**

1. Applying for Photocopy of answer book and applying for revaluation will be two independent processes.
2. Applying for photocopy of answer book or having photocopy of answer book shall not be a pre-requisite for applying for revaluation of the answer book in the said subject.
3. The examinee can independently apply for revaluation or photocopy or both simultaneously, if s/he desires so.

4. The examinee who desires to apply for revaluation is requested to note that, his/ her original marks will become null and void as soon as s/he submits his/her application for the revaluation.
5. The examinee shall check the University website from time to time for the various details regarding his/her result status/ information/ list etc., as the entire process is carried out online. It is responsibility of the examinee to verify the online details. No complaint will be entertained in this respect after due date is over.
6. However, the university may adopt any other procedure for acceptance of the application/ fees, which will be circulated for the information of examinees.
7. The facility of obtaining photocopy(ies) of assessed and/ or moderated answer book (s) by the examinee is extended with a view to bring transparency in the examinations system and ensure its credibility.
8. Under these rules, applying for photocopy(ies) of answer books shall be permitted in respect of:
  - i) For theory papers of all examinations conducted by the University in the current session.
  - ii) The examinations conducted by the Director of the Institute of Distance Education / Principals of constituent/ affiliated colleges or directors / Heads of University department / Recognized Institutions of behalf of the University, in the current session.
  - iii) The scripts of practical examination / session work/ project work / dissertation / internal assessment / term work (including theory part) whenever the written scripts are available, in the current session.
9. The examinee(s) shall apply for the photocopy to the principal/ Directors of the respective College / Institution to which the candidate has registered for the said course in the prescribed format along with the non-refundable fee prescribed for the purpose by Controller of Examinations, as per the procedure and the manner decided by the University, time-to-time. The examinee belonging to the reserved categories shall be granted 50% concession in the fees.
10. The Principal / Directors of the respective college / institutions to which the candidate has registered for the said course shall process the applications of practical examination / session work / project work / dissertation / internal assessment/ term work (including theory part) wherever the written scripts available as per the procedure laid down here-in-after *mutatis mutandis*.
11. The Principal/ Directors of the respective college/ institutions shall accept the prescribed application form

# EXAMINATION RULES UNDER CBSGS

- for obtaining photocopy(ies) of answer book(s) of the examinations conducted by University within ten working days from the date of the declaration of the result of the examination. He shall forward these applications to the university within next 3 days. No application after the date will be entertained on any ground whatsoever.
12. Incomplete application forms, applications with false information, unsigned applications shall be rejected without assigning any reason whatsoever and the fees paid along with the application form neither shall be refunded nor will any representation be entertained in such cases.
  13. The University shall endeavour to supply photocopy of answer books as far as possible within 25 working days from the date of receipt of application to the university.
  14. On receipt of photocopy(ies) the applicant examinee shall be the sole custodian of it and under any circumstances the examinee shall not part with the custody/ possession of the same and also shall not use the same for any other purpose(s).
  15. The photocopy(ies) so obtained by the examiner shall be for his/ her exclusive and relevant use. Neither the said examinee nor any other person can use the said copy to dispute or challenge the quality of assessment or quantum of marks assigned to the answer there-in.
  16. If the examinee is found guilty of indulging in any act/ attempt he / she shall be liable to be tried before the unfair means committee of the University and the decision taken by the authorities based in the recommendation of the said committee shall be final.
  17. If his/her indulgence/ commission in unfair act / attempt are proved, the examinee shall be liable for the punishment ranging from:
    - i) Cancellation of his/her marks in the said subject either original or after revaluation,
    - ii) Cancellation of his/her marks in full of the said examination,
    - iii) Annulment of examination(s) maximum up to 5 years.
  18. On receipt of the photocopy, if the discrepancy of following nature is noticed by the examinee, he should apply to the university within seven working days to the Controller of Examinations along with the fees of Rs. 100 as Grievance Redressal Fee.
    - i) Mistake in totalling
    - ii) Non assessment of question/ sub- question
    - iii) Improper photocopy
  19. After due verification, the Controller of Examinations shall make necessary rectification in the marks allotted to the said subject and consequently in the result of the candidate without charging any further fee for such rectification and also declare the same on University website.
  20. It will be binding on the concern examiner/ moderator to attend the call of the university and be present for revaluation work. It will also be the responsibility of the Principal/ Director to relieve the examiner/ moderator to attend University on the given date or within next three working days.
  21. Not attending the university revaluation work within stipulated period will be treated as misconduct. Appropriate action and/ or penalty of Rs.100/- per day will be imposed on concerned teacher and also the concerned principal, if he/she does not relieve the teacher in time.
  22. The examinee is free to apply for photocopy(ies) of answer books of as many subjects as he/she desires.
  23. The examinee is free to apply for photocopy(ies) of answer books of as many subjects as he/she desires.
- Rules and Procedure for the Revaluation of the Answer book(s)**
24. If the examinee is not satisfied with the marks awarded, he/she may apply for revaluation to the university/ Institutions / College in the prescribed form within the prescribed period and in the manner prescribed here-in after.
  25. The revaluation facility shall be for theory papers of all the examinations conducted by the university for the respective current session and the applications received within prescribed time limit.
  26. Under these rules the revaluation of answer books shall also be permitted in respect of,
    - i) The examinations conducted by the director of the institute of Distance Education / Principals of constituent/ affiliated colleges of Directors / Heads of University Departments / Recognized institutions, on behalf of the University,
    - ii) The marks awarded to the scripts of practical examination/ session / project work / dissertation / internal assessment/ term work (including theory part) wherever written scripts are available.
  27. All examinees can apply for the revaluation of the answer books with whatever marks s/he secured and even the zero marks.

# EXAMINATION RULES UNDER CBSGS

28. The examinee can apply for the revaluation of his / her answer books of the as many subjects as he / she desires
29. The examinee shall apply for revaluation in the prescribed form along with prescribed fee and in the manner and procedure decided by the University.
30. The candidates belonging to the reserved categories shall be given 50% concession in the fees, provided the principal of the concern college certify the same.
31. For the examinations conducted by the University, the prescribed application form for revaluation of answer book should be submitted to the college, within ten working days from the date of the declaration of the result of the respective examination. No documents are to be attached with application.
32. For the examinations conducted by the college/ department/ Institutions, and also for practical examination/ sessional work/ project work/ dissertation/ internal assessment/ term work (including theory part) wherever written scripts are available., the prescribed application form for revaluation of answer book should be submitted to the respective college/department/ Institutions, within 10 days working days from the day of the declaration of the result of the respective examination.
33. Examinee has to endorse all details / marks correctly in the application form. Any false information, if observed at any time, the application will be summarily rejected. No refund will be entertained in such cases.
34. The examinee shall submit the application and remit the prescribed fess in the manner and procedure decided by university. The principal of the concerned college shall verify the application data, especially the reserved category cases, certify and forward the applications of the examinations conducted by the university within next five days, to the university. The applications of the examinations conducted by the respective college / department / institution shall process the applications as per the manner and process defined by this VCD mutatis mutandis.
35. The processing and co-ordination of the revaluation cases will be done by the concerned unit. The verification and rectification, if required, in these cases be done by the concerned unit. Assessment of the revaluation process will be done by arranging the CAP.
36. The applications for revaluation received after the last date shall not be accepted by the university under any circumstances, whatsoever.
37. Effect shall be given to the change in original marks on revaluation, as under
  - i) The marks obtained after revaluation shall be accepted, if the marks awarded to a paper as a result of revaluation, increase or decrease in revaluation by 10 percent or more than the maximum marks assigned to that paper, and in such case(s) the marks originally obtained by the candidate shall be treated as null and void and the marks obtained by the candidate after revaluation shall be accepted as the marks obtained in that paper.

Notwithstanding what is stated above, the marks obtained after revaluation shall be accepted by the University, If the candidate gets benefit of passing the subject or examination or change of class or grade in the paper or in the overall result at the said examination with or without grace marks under the provisions of relevant ordinances or as resolved by the examiners in the said subject.
  - ii) Not withstanding what is contained in clause 39 (i) where the difference between marks originally obtained by the candidate without any grace marks and the marks obtained after revaluation will be accepted upto 25% of the maximum marks assigned to that paper.

However, if the difference between marks originally obtained by the candidate in the paper without any grace marks, and marks obtained after revaluation increase or decrease by more than 25% of the maximum marks assigned to that paper, a second revaluation of the said answer book be done by a third examiner from the panel of examiner for the said subject.
  - iii) An answerbook shall also be sent for second revaluation to another examiner (third examiner) if on the first revaluation, a candidate's marks are decreased below the passing marks. In such an event the marks assigned by the third examiner will be treated as the final marks in the said subject.
  - iv) The revised marks obtained by a candidate after revaluation, as accepted by the University shall be taken into account for the purpose of amendment of his or her results only and the said result will be communicated to the student through the University website.

# FREESHIPS & CONCESSIONS

## CENTRAL SECTOR SCHEME OF SCHOLARSHIP FOR COLLEGE AND UNIVERSITY STUDENTS

**Eligibility:** 80% and above at XII standard Exam from the year 2013-14 onwards. Last Date of Submission marksheet of the application in the college: 30th August 2014.

For further information, please refer to website [www.education.nic.in](http://www.education.nic.in) OR [www.drhe.org.in](http://www.drhe.org.in) OR contact the Registrar of the College.

## FREESHIP TO CHILDREN OF ECONOMICALLY BACKWARD CLASS

- Those students whose parents / guardian annual income is Rs. 15,000/- or below are eligible for E.B.C. Freeship
- Students who wish to apply for E.B.C. Freeship should apply in prescribed application form duly filled in and signed by S.E.O. (Special Executive Officer, Govt. of Maharashtra) and submit the same along with admission form.

## FREESHIP TO CHILDREN OF PRIMARY TEACHERS /SECONDARY TEACHERS / NON-TEACHING STAFF/ EX-SERVICEMEN / FREEDOM FIGHTERS

- Those students who wish to apply for P.T.C. / S.S.T. / N.T.S./ Ex-Servicemen/Freedom Fighter freeship are required to apply in prescribed application form duly filled in and signed by Headmaster / Headmistress for Children of Primary Teacher, Secondary Teacher & Non-Teaching Staff and counter signed by Block Development Officer, in case of Primary Teachers Only.
- The Following documents are required to be enclosed alongwith above freeship Form:
  - Two attested photocopies of Marksheet,
  - Two attested photocopies of Fee Receipt.
  - Two attested photocopies of Ration Card.

The students must follow these rules strictly. Incomplete forms will not be accepted under any circumstances. As per ordinance No. 119 Students who do not have a minimum 75% attendance will not be eligible for any kind of freeship

## STATE GOVERNMENT OPEN MERIT SCHOLARSHIP (FRESH AWARD) TO DEGREE COLLEGE STUDENTS

Those students who have secured 75% and above in the H.S.C. Examination can apply for the state Government Open Merit Scholarship (Fresh Award)

Students can get renewal of such Scholarship in S.Y. & T.Y., provided they secure minimum 50% of marks & fill

up the Annual Progress Report Form within 7 days from the date of admission.

## NATIONAL MERIT SCHOLARSHIP

Those students who have secured 1st/2nd Rank at School/Junior College level can apply for the National Merit Scholarships. The forms for the same will be issued from their respective School/Junior College where they have secured 1<sup>st</sup> / 2<sup>nd</sup> Rank or from the Divisional Secretary, Mumbai Divisional Board, Mumbai.

Students can get renewal of such Scholarship provided if they secure minimum 50% of marks & fill up the Annual Progress Report Form within 7 days from the date of admission.

## SCHOLARSHIPS FREESHIP

Those students who belong to S. C. & S. T. caste and their parents / guardian having annual income below Rs. 2,00,000/- (Rupees two Lacs only) for S. C. and Rs. 2,50,000/- (Rupees two lacs fifty thousand only) for S. T. are eligible for the said scholarship and family income is above Rs. 2,00,000/- (Rupees two lacs only) for S. C. And Rs. 2,50,000/- (Rupees two lacs fifty thousand only) for S. T. he/she eligible for freeship.

No upper limit of income has been fixed for S.C. & S. T. Category students to avail the above mention scholarship/freeship

## GOVERNMENT OF INDIA POST MATRIC SCHOLARSHIP TO BACKWARD CLASS STUDENT BELONGING TO N.T. (A) (B) (C) (D), S.B.C, O.B.C. CATEGORY

Those students who belong to N.T. (A) (B) (C) (D), S.B.C. O.B.C. category and those parent/ guardian having annual income below Rs. 6,00,000/- (Rupees six lakh only) are eligible for the said scholarship and if the family income is above Rs. 1,00,000/- to Rs. 4,50,000/-. He / She is eligible for free ship. Non Creamy Lear certificate is important.

### **Note:**

- Category NT, SBC and of IT course (under graduate as well as post graduate) students can not avail fee concession under reserve category.
- Computer Science and Management studies is categorized as 'Z group subject of N.T., S.B.C., O.B.C. who have taken Computer Science and Management Studies are not eligible for scholarship or free ship.
- Caste certificate, Income Certificate and Non Creamy Lear Certificate should be issued by competent authority (Tahasildar)
- First three wards are eligible fee concession under reserve category. For the third ward an affidavit should

# FRESHIPS & CONCESSIONS

be submitted stating that 1st and 2nd child (brother/sister) has not taken any concession anywhere.

- For EBC student income limit increased from rupees 15,000/- to rupees 1,00,000/-.

## **Documents to be submitted:**

- Form downloaded from the website
- Form 16/ Income Certificate from Tehsildar (Requirement for scholarship)

## **POST GRADUATE SCHOLARSHIP**

Those who have secured more than 60% in final year Degree College held in March /April, 2014 and his / her family income less than Rs. 1,00,000/- (Rupee one lakh only) he/ she eligible for post graduate Eklavya Scholarship of (Rs. 1500/-)

## **Documents required:**

- Attested photocopy of final year mark sheet.
- Attested photocopy of Income Certificate.
- Attested photocopy of I - card / Fee Receipt.
- Attested photocopy of Ration Card.
- Bank A/c. No.
- Caste Certificate (Only those students who belong the SC, ST, NT, SBC, OBC)
- Domicile Certificate.
- Affidavit

## **JUNIOR AND DEGREE COLLEGE MINORITY SCHOLARSHIP (CASTE BASIS)**

- Students (he/she) who belong to Muslim, Christian, Sikh, Boudha Religion, have secured more than 60% and if their family income is less than 2,00,000/- (Two Lac) can apply for minority Scholarship. Online forms are available on site - MOMA Scholarship.(Ministry of Minority Affairs Scholarship) [www.momascholarship.gov.in](http://www.momascholarship.gov.in) / [www.mahascholarship.gov.in](http://www.mahascholarship.gov.in)

- Students who have applied for Scholarship are required to open a S. B. Account in Union Bank of India, Dr. Ambedkar Road Branch only and submit the same along with the application form. The student seeking admission on the basis of caste certificates will be required to apply in prescribed application form for Scholarship / Freeship within twenty days from the date of taking admission. No application form will be accepted after completion of twenty days and students will have to pay full fees. Those students whose attendance is less than 75% their scholarship / freeship will not be sanctioned. Such students will have to pay full fees.

# COLLEGE AWARDS AND SCHOLARSHIPS

## **COLLEGE AWARDS AND SCHOLARSHIPS**

- Principal K. M. Kundnani Scholarship for University Rankers
- Barrister H.G. Advani Scholarship
- Principal K.M. Kundnani Scholarship
- Principal N.J. Hingorani Scholarship & R. N. Kudchadkar Scholarship
- Watumull Foundation (India) Scholarship
- Silver Jubilee Scholarship
- His Holiness Swami Ramanand Chidakashi Scholarship
- Smt. Kamala P. Bijani Scholarship & Smt. Shantidevi Narhari Scholarship
- Late Shri H.D. Rawtani Scholarship
- Late Dada Tirathdas Scholarship
- Shri Thakurdas Deomal Scholarship
- His Holiness Swami Amardas Udasi Scholarship
- Parasram T. Bhatia Scholarship
- Parasram Bharwani Scholarship
- K.T. Shahani Scholarship & Shri Dayaldas Meerani Scholarship
- Shri Dayaldas Chhabria Scholarship
- Meghraj Daryanani Scholarship
- Drupad J. Mane scholarship

- Dr. R.S. Sharma Scholarship
- Smt. Naina Parimal Shah Prize (*Highest marks in Hindi at F.Y.J.C. to a Girl student*) (*Highest marks in Hindi at F.Y.J.C. to a Boy student*)
- Teachers' Award for Girl Students
- Jotu Kundnani Award for Lady Teachers
- Felicitations of Teaching and Non Teaching Staff (*25 years of dedicated service*)
- Felicitations of teaching staff who completed PhD
- Mrs. Lila D'Souza Scholarship
- D. M. Harish & Ratna Harish Award for best student (*Girl or Boy*)
- Shri Sujan Singh Jagtians Scholarship

## **MEDALS, SHIELDS AND TROPHIES**

- Blow Fest Inter House Trophies
- Blow Fest Captaincy Awards
- Principal's Special Award (*Outstanding Students of the year*)
- N.S.S. Award (Best Camper Award) (*Special N.S.S. Award*)
- Honors' Certificates
- Sports Awards
- Nature Club Award
- Economic Convention Award

The development and implementation of innovations in an institute have an impact on all its systems elements: components, relationships and functions. At the components level, a wide range of direct and indirect, individual and institutional stakeholders are Influenced by these innovations. At the relationships level, the most important effects are due to cooperation, networking and increased mobility, which may alter traditional relationships among stakeholders or introduce new ones. At the functions level, the most significant impact is observed on the education function, and a more limited, but growing impact is observed on the research and engagement functions. The change induced in a higher education innovation system by the innovative practices examined in the study is not of a radical nature, but is rather slow and incremental.

Taking this into consideration, R. D. & S. H. National College has introduced important innovations which have been running very successfully for the past nine years. These innovations have brought about a sea of change in the general atmosphere of the college and have elevated it to an institution with excellent student-faculty interaction, wonderful research opportunities and a competitive spirit which keeps in mind the college motto "Play the Game", it encourages healthy and fair competition in every field.

## PERFORMANCE ENHANCEMENT PROGRAM / INITIATIVE

### Academic Preparatory Courses

The institution tries in every possible way to strengthen the process of subject comprehension whether it is to bridge the chasms left in the prescribed syllabi framed by the University or by the introduction of the Open book test series.

The college doesn't leave any stone unturned in attempting to bring even the remedial learners at par with regular students, with not only lectures but also remedial practical.

- **Bridge Course:** Bridge course brushes up the basics to help students understand concepts especially relevant to the syllabus. The course takes place in the first week of every semester.
- **Open Book:** It aims to make students aware about the language, jargons used, way of presenting an answer and inculcating a habit of reading and presenting the answers in a structured format. It is conducted after the completion of all the courses at the end of each semester.
- **Intensive Coaching:** Specialized training related to third year semester students clarifying their queries,

special tips for writing the papers effectively with the help of external subject experts and subject teachers.

- **Remedial lectures and practical for defaulters:** It is conducted to improve the performance of defaulters and slow learners in lectures and practical.

## FUNCTIONAL PROFICIENCY COURSE IN ENGLISH

Functional Proficiency Course in English is a short term course, introduced by the department of English. This is not a speaking course but it aims at enhancing all the skills needed for communication in English viz. Reading, Writing, Speaking and Listening. It is run for the basic level for a period of 3 months. It is taught with the help of a syllabus especially framed for this purpose. This syllabus is meant to improve students' fluency, diction, pronunciation, body language and expression.

## HONORS / RESEARCH PROGRAM

The syllabus followed by the college for any subject is prescribed by the University. As a result, students do not get an opportunity to study subjects which do not belong to their chosen stream. Thus, they have limited scope go beyond the options offered. This results in a stunted academic growth. To meet the shortcomings of the system, the college has introduced an interdisciplinary research-based program, 'Honors Program' – The students' Research Initiative for the students of UG & PG courses.

The duration of this program varies from six months to one year depending on the nature of the projects through which they enrich their knowledge beyond curriculum in their own subject or in an interdisciplinary topic. The Honors program consists of two modules, namely, a compulsory component of Research Methodology and Project Work. Projects can be selected from their own discipline or any other disciplines. At the end, they are required to prepare a project report and the same is presented which is evaluated by a panel of experts. Successful candidates are awarded with a certificate. Students have reported that the Honors certificate has done wonders for them in the job market because their prospective employers have been impressed by the fact that they have done something more than what their basic degree demands, a quality that each employer looks for in a candidate.

UG as well as PG Students participating in Honors Program have been participating in the Research Convention – "Avishkar" Research Convention, organized by the University of Mumbai. Since 2018 college has been receiving Best College Award (awarded by the DSW, University of Mumbai) in West Zone for participation in Avishkar Research Convention.

## COMMUNITY SERVICE AND CONNECT

The students of Foundation Course subject make an attempt to connect and serve various segments of the society. The social work includes helping an NGO's , municipal school, traffic police, government hospitals etc. The students are expected to devote atleast 50 hours to community service every semester. Every group of 5 students is headed by a working group leader and each class is led by their Core Group leader

## CAMPUS INDUCED PLACEMENT PROGRAM (CIPP)

Employability skills are not just about being good at academics or project submissions. With the increasing number of graduates every year, the competition to get placed during campus placements and find good jobs has grown exponentially. As it is, most of the fortune companies turn to elite universities and colleges for hiring. Thus, the situation turns demanding for many students.

In the highly competitive job market, it is very unfortunate to see many students unable to get into their desired jobs; not because there is a scarcity of jobs, but because they don't match the recruiter's criteria. One big step required to improve this situation is to start preparing students early and not directly in the final year.

The college takes continuous practice and assessment at every stage to bring out the improvements and achieve the level of perfection we strive for. The same applies to enhance their employability skills that would help improve the rate of campus placements and make students achieve success. Therefore we undertake Campus induced Placement Program with the aim of:

- To ensure that undergraduate students had opportunities to develop the skills required for the workplace, to experience the processes involved in documenting and reviewing their skills set, and for action planning.
- To link the skills, work to the requirements for chartership and to demonstrate that work done as students was a foundation for continuing professional development in the workplace.

Hence college, under this practice, have developed following Instruments:

### • In House Internship Programs & Short Term Courses:

In House Internship initiative & short term course of the college helps students to get real time feel of relevant industry and learn new techniques. It also helps the students to understand office/ work

environment, the work process in their chosen subject and improve academic excellence. The college identified some of the operations on which students can be provided hands on training under the expert guidance of the teaching and non-teaching staff. It is a structured program consisting of technical sessions, actual hands on training, record maintenance, review and reporting.

The operations under this program are: Milk Testing, Energy Saving, Solid Waste management, Water Testing. Monitoring of Recycled Water, Web Management, Identity/ Library card management, Maintenance of Computer systems in college, Event Management, Accounting & MIS , Household Vegetable farming, Social Forestry for livestock, Language Clinic for English Proficiency, Teacher training / Peer learning, Career Counseling Clinics, Horticulture. Various Inter-disciplinary short term courses are Principle of Management & Applications, Value Education through Literature, Taxation, Digital Media Marketing, Research Methodology, Wealth Management Courses, Eco-Toursim.

The **Department of Psychology** offers two short term courses on **Australian Certification MFA course** and **American Certification SKY**.

### • Industry Based Internship

#### Types

- ✓ Post Short Term Course
- ✓ Curriculum Driven
- ✓ Special Project Oriented

**Departments Involved:** BMM, MSc (Biotechnology), BMS, Commerce, Botany, Physics, BAF, IT, Computer Science

**Organizations Covered:** Backpack, Sutra, Soaring Eagles, Karvey, MotilalOswal, ABP News, Vogue-Magazine, Elle- Magazine, DCB, ICICI Mutual Funds, Ogilvy & Mathers, ICRISAT-Hyderabad, ISER-Pune, MITCON-Pune, CCMB Hyderabad, Serum Institute of India-Pune to name a few

### • Curriculum intense Intercollegiate festivals:

Providing industry-based knowledge on curriculum is essential to a student during the course of their study. Equally important is to learn soft skills, gain financial acumen, team building, resume building, event management and establishing meaningful contacts with the employed alumni.

The departments are encouraged to organize Inter Collegiate festival with curriculum intense activities in a

corporate like structure. Some of intercollegiate festivals over the years are: Cutting Chai (Mass Media), Meter Down (Management Studies and Accountancy and Finance), Helix (Biotechnology), Fluorescence (Chemistry), SynTech-X (Computer Science), TechTris (Information Technology), Fizzics (Physics), Prakriti (Botany), PsychoMagicum (Psychology), Illumnavi (Arts and Commerce), Prajatantra (Political Science) and Zoonation (Zoology).

## **TUTOR/MENTOR SYSTEM**

In schools, students get personalized attention from teachers because the teacher-student ratio is small and manageable. However, in college, due to large numbers, the students are mere roll numbers for the teachers. This robs them of a sense of belonging. Even the students do not know the names of their teachers and relate them to the subjects taught. This impersonal interaction certainly does not lead to enrichment of college life.

Taking this into consideration, the college decided to introduce the tutor system to encourage a more meaningful and close relationship between the students and teachers. Accordingly a class of 120 students is divided into batches of 40 each and put in charge of a teacher who acts as friend, guide and counsellor.

Regular meetings are held with fixed agenda where the students are informed about all the rules and activities of the college. Since the numbers are small, the students have direct and close interaction with their tutors. They can seek clarifications in matters like examination rules, academics and others. In case students have problem in the college, they can go to their Tutor for guidance. The tutor also acts as a bridge between the administration and the students and tries to iron out any rough edges which the students experience.

Tutors also encourage their group of students to take part in all the college activities. Since its inception, the system has been successful in establishing closer interaction between the students and teachers.

Academic Mentoring of students from the academic year 2013 -14 the mentor system was initiated especially for TY Students This was to monitor their academic performance in each subject, call parents of students defaulting in attendance and to motivate students to enhance their learning skill.

Since, the academic year 2015 –16, the mentor system was introduced for FY Classes also to closely monitor the academic performances right from the first semester. This

has significantly improved the attendance and result of the students.

## **HOUSE SYSTEM**

It was observed that participation in co-curricular and extra-curricular activities was restricted to only a few front runners. To encourage widespread participation, the college decided to introduce the House system which would ensure larger support and more competitive spirit. Five houses were created and named after pancha tatva, the five elements of nature - Agni, Aakash, Jal, Prithvi and Vayu. The Houses were assigned symbolic colors – red, dark blue, light blue, green and white respectively. Each House selects a mascot and a logo. Special flags and banners were designed so as to give each house a distinct identity. All the students belong to one of these five Houses.

Captains and vice captains of the five houses are selected through an interview by a panel. Every house is headed by a Captain and his / her team consisting of Vice Captains, Board of Directors & Class Directors. Their role is to motivate & encourage participation in the various programs organized by the college. Each competition is awarded a ranking and given credits. The house that gets the maximum credits wins the coveted Inter-House Cup.

All the co-curricular and extra-curricular Programs organized by R. D. & S. H. National College is conducted by the House System. Besides the above mentioned programs, the House system is actively involved in facilitating all other socially relevant and other programs that help in sensitizing the students towards their social and environmental responsibilities.

The participation of the students from National College in all the co-curricular as well as extracurricular competitions/ Programs / Intercollegiate competitions/ Festivals organized by other colleges, including the Youth Festival organized by the University of Mumbai is exclusively facilitated by the Cultural Committee.

Over the last couple of years the participation has increased in these programs and since the academic year 2017-18, students of R. D. & S. H. National College have bagged many trophies in some of the prominent intercollegiate festivals organized by other colleges as well as in the Youth Festival organized by the University of Mumbai.

# ASSOCIATIONS & CLUBS

## RESEARCH CELL

Research must be an integral part of academic institutes. It enhances the knowledge of teachers and satisfies their enthusiasm. It also keeps on updating them with the latest happening around them. Realizing this the research committee mainly focuses on promoting and encouraging research culture in the institute amongst teachers and students. It promotes the culture of innovation by creating an ecosystem of resources, academic programs, incubators & experts to boost innovation and successful start-ups. Research committee facilitates student oriented research as follows: Kishore Vaigyanik Protsahan Yojana (KVPY), National Initiative on Undergraduate Science (NIUS), summer trainings at recognized centers in India in association with HBCSE (TIFR) and National Science Academies are available for undergraduate student. Interested students can avail such scholarships in assistance of college research cells. Students can register themselves under research projects under extremely motivated research faculty from various departments. Students are provided with financial support from college with Principal's permission for paper presentations in conferences and workshops.

In association with various departments in college, the research committee has organised a National Level conferences, seminars and colloquium in the last five years. Research committee has also come up with National conference proceedings which have been a part of UGC-recognised journals in interdisciplinary subjects. Research committee channelizes Central government grant which includes **DBT STAR College Scheme** for six Science departments and **DST-FIST GRANT** for all Science Departments. These grants are helping college to initiate various research Infrastructure updation which include undergraduate instruments updation in individual science departments and a common instrumentation facility for High-end instruments for all faculty and students at college level.

## INSTITUTE INNOVATION COUNCIL (IIC), MHRD

There is a pressing need of the Institute Innovation Council that can not only foster the aforesaid activities but can also create an Innovation Ecosystem at institute as well as at regional level. A well-defined innovation centre will not only enable knowledge sharing among various stakeholders but will also enhance collective and individual visibility of higher education institutes and faculty. The Ministry of Human resource development has given this opportunity to all the higher Institutions to compose their IIC in 2018. Therefore, the college has initiated the efforts to start the IIC, MHRD in College which has enrolled more than 700 students in 2019-20 and provided them continuous innovation and entrepreneurship learning even during the lockdown period. IIC has three main facets where external experts are the strength to connect the students with the right industry as well providing them mentoring as or when needed.

The IIC is managed by president, convener and coordinators in various areas supported by a team of enthusiastic students equipped with a strategic plan developed through participatory sessions. Its effective implementation shall be in consultation with the Head of the institution. IIC coordinators with his team shall ensure successive growth of innovation capacity and innovation ecosystem. The IIC shall also stimulate innovative and entrepreneurial thinking fostering research potential among

students through practice and regular interactions with academicians, industry leaders and scientists leading to cultivation of mind set for innovations, organizations of academia and industry to achieve the innovation cohort and institutional consortium for innovation in this region.

In 2019-20, College has been awarded 5STAR and among the top performers from the western Zone at the National network of IICs. This year, under the aegis of IIC National Innovation and Start-up Policy (NISP) has been framed for the College which has been approved by the management. A pre- incubation centre Vidysagar Principal Kundanani Innovation and Entrepreneurship Centre has been established following the NISP guidelines to strengthen the Innovation and Start up Ecosystem in the college. This year implementation of NISP guidelines will be followed in a sustainable approach.

Students who are looking for some Innovation and start-up opportunities in future can join the IIC, RDNC in the first year only and can take advantage of various schemes and programs conducted regularly by the IIC, RDNC.

## PLACEMENT CELL

Placement cell of the college provides job opportunities to the final year students, by facilitating on campus & off-campus recruitments. It conducts orientations for Civil Service Aspirants and also for students interested in studies abroad. It also strives hard for providing internship opportunities to students of FY& SY classes so that on completion of graduation the students have a fair exposure of corporate world and are well versed of the market requirements. Placement cell has a Notice Board in a prominent place and it displays placement offers received from the employers. The Placement Cell and individual departments conduct workshops / seminars to improve the employability and placement potential of the students. The Placement cell of the college coordinates with potential employers and arranges for placement interviews. A Full Time Placement Officer looks after the Placement Cell.

A Placement Mela / Job Fair is organised at the end of every academic year for the students where they interact with multiple companies for full time placements and internships

Some of the companies where the students have been placed / interned are Infosys, Capgemini, Accenture, L&T Infotech, ICICI Prudential Life Insurance, Aufklaren, TCS, Deloitte, Wadhwa Group, Direct-I, Wipro Cipla, Loop In, Glenmark, Asian Paints, BASF, PricewaterhouseCoopers, JP Morgan, Backpack, Birla SunLife, HPCL, Soaring Eagles, Brand Trunks, Sutra, Iosis etc.

Some of the institutes of higher learning where our students are enrolled are Dunkin Boston University, TIFR, BARC, TISS, University of Australia, Institute of Costs Accountants of India, MET, Symbiosis University, Amity University institutions affiliated to the University of Mumbai etc.

## NATIONAL SERVICE SCHEME (NSS)

The National Service Scheme (NSS) is a Scheme of Government of India, Ministry of Youth Affairs & Sports launched on 24th September 1969, Mahatma Gandhi's Birth Centenary Year. The scheme encourages the youth to participate in the community service initiatives of the academic institutions thereby enhancing

# ASSOCIATIONS & CLUBS

their leadership skills and empathy quotient. Currently, around 3.8 million students participate in this NSS Nation-wide. RDNC NSS Unit is one of the most vibrant and active teams of the University of Mumbai. The NSS unit was also conferred “Best NSS unit of University of Mumbai, Best NSS unit of Mumbai western suburb District and also Maharashtra State NSS Appreciation award in the year 2016-2017 for its excellent community Service.

**The RDNC NSS Unit has an intake capacity of 250 volunteers. A team of seven faculty members including three program officers guides and monitors the performance of NSS volunteers.** The service methodology for the unit is through constructive and productive community actions such as

Awareness Drives, Exploration on social reforms, Communal Harmony, Creation of Community Assets, Blood Donation, Plantation, and other environmental conservation projects, education to school dropout adults, Health awareness and Education through various Campaign, plantation works, Training Programs including skill development, Disaster Management, etc. the NSS unit also organizes one socio-cultural fest **BENEVOLENCE** on the 5<sup>th</sup> of December to mark the **International Volunteer’s Day** to promote young cultural talent in the various performing arts like Dance, Drama, Music Bands, etc. NSS also organizes one special camp of 7 days and two additional camps of 4-5 days every year at its adopted village in the Konkan area with the objective of providing the volunteers with a blended flavour of rural landscapes, trekking, project planning, and execution, etc. Such camps have a multi-dimensional effect on the life of a student for making her/him a stronger and responsible being. Deserving Volunteers get the opportunity to participate in National Level Camps like National Adventure Camp (NAC) in the Himalayas, National Integration Camps (NIC), Avhan Camp for disaster Management, Utkarsh Cultural Camp, etc. Hence the focus of the college NSS unit is on the volunteers who are trained with skills, imbued with values, developed with temperament and rational persona, and empathy-driven behaviour.

After admission, any student can join NSS by filling a form issued by the NSS unit of the college. Link for the same is <https://forms.gle/novWQC88eMx4wATv7>. The admission is purely based on the availability of seats and there is No Fee for enrolment in NSS.

A volunteer has to enrol for 2 consecutive years (e.g. FY and SY) and complete 120 hours of service each year to become eligible for 10 grace marks at the end of the even semester i.e. Sem II and IV. On the Completion of 240 hours of service and one special rural residential camp, the volunteer is awarded a certificate by the Govt. of India, which holds a great significance in their career.

## **THE NATURE CLUB**

College has an active Nature Club. Main objectives of Nature Club are to promote Research & Culture pertaining to environment related issues. It also tries to improve our natural habitat through self-governed action by supporting government agencies, NGO's & educational organization in the urban regions. Nature Club tries to co- related the scientific understanding of undergraduate courses for creating

better living space, which in turn helps to overcome the grim effect of Global Warming and Climate change. It helps all inhabitants of the planet earth to make small changes which will lead to a gigantic change in the long run through people's participation. An E-Newsletter “Neev” is published electronically in collaboration with the Department of Botany which is circulated among more than 5000 people in India and abroad. The articles are contributed by students, alumni and faculty of the college.

The theme of the Nature Club for the academic year 2020-21 is ‘SUSTAINABILITY’. All programs of the club during this academic year will be based on this theme.

## **ALUMNI ASSOCIATION OF NATIONALITES (AAN)**

AAN is an active body which contributes in academic matters, student support as well as mobilization of resources – both financial and non financial. It promotes and maintains contact among all Nationalities, by creating opportunities which enables alumni to strengthen their bond with their alma mater.

### **Some of the activities of AAN:**

- Alumni Mentorship Programs: Mentorship of Students, Guidance in Projects etc, Career Guidance, Competitive Exams.
- Department Wise Mentorship
- Volunteering: Employment, Internships, Industrial Visits, Linkages, Guest Lectures
- Community Service
- Philanthropy
- Research & Innovation
- Library: Books & other Materials
- Performances: Cultural and sports events
- Contribution towards Add on /Skill Development Courses.

## **WOMEN DEVELOPMENT CELL (CWDC)**

In keeping with the statutory requirements of the University of Mumbai, R.D. National College has constituted a Women Development Cell whose primary objective is to address issues related to women staff and students of the college and create a safe environment for them.

The cell also seeks to empower its women staff and students through workshops, lectures discussions. It sensitizes young minds on gender related issues, looks into grievances of female staff and students, as well as creates social awareness about gender related issues and legal awareness on specific issues. In this way, the WDC promotes the wellbeing of the female staff and students of the college.

Over the years, the WDC has held panel discussions, quizzes, presentations and lectures on women's issues by eminent personalities from the fields of media, politics, academics, social work etc. It has also supported the initiative of the Khar Police Station to facilitate a better understanding of women's issues in our society.

# COMMITTEES

## **STUDENT SUPPORT COMMITTEE**

Student support is an organisation conducted by students and supervised by the Faculties. The purpose of the student support is to give students an opportunity to develop leadership by organising and carrying out various college activities and services. In addition to planning events that contribute to college spirit and community welfare, the student support is the voice of the student body. They help share student ideas, interests and concerns with the college wide community.

## **CAMPUS OUTREACH COMMITTEE:**

College was established in 1949 and had planted several trees at that time, adding to overall ambiance of the college.

However, gradually the plant cover was deteriorating and the planters were transforming towards desolated patches due to technical inefficiency of non-teaching staff solely responsible for greenery. Therefore, the concept of Campus outreach committee was conceived. The outreach committee has up-keeping and expansion of campus green milieu as one of its core responsibility. The campus outreach committee has undertaken the campus development work that has resulted into increased serenity and green cover, in and at the fringes of college campus.

## **ANTIRAGGING AND ANTIDRUG**

Despite all the efforts by police and other law enforcing agencies, drugs are being distributed around the world to the youth. The college recognizes it as a serious threat to the society. Hence, it seeks to eradicate this menace. For this reasons an anti-ragging and anti-drug committee has been created so that both threats can be tackled together. The committee is headed by the senior Vice Principal.

## **DROPOUT EVALUATION COMMITTEE**

It is responsible for conducting feedback sessions with students who leave the college by exit interviews.

## **HEALTH AND HYGIENE COMMITTEE**

It takes care of cleanliness and monitor canteen food in campus. A qualified doctor visits the college every Saturday and operates from the NSS cell and is available on-call in the campus on other days. Annual health check camp is organized for non-teaching staff and their families, teaching staff in campus colleges.

## **LOCAL MANAGEMENT COMMITTEE (COLLEGE DEVELOPMENT COMMITTEE)**

The College Development Committee shall prepare an overall comprehensive development plan of the college regarding academic, administrative and infrastructural

growth, and Enable College to foster excellence in curricular, co-curricular and extra-curricular activities.

## **LECTURE MONITORING COMMITTEE**

A lecture monitoring committee ensures that the lectures are conducted on time as per the Time Table allotted to the Faculty

## **OUTSTATION STUDENT COMMITTEE**

The College has established an "Outstation student committee "under the aegis of a Vice- Principal and a coordinator.

The Committee helps the students for eligibility requirements for admissions, gives admission counselling on one to one basis besides addressing other issues pertaining to safety and security, procurement of Visa, grievance related to attendance, Curriculum related difficulties, examination etc. The committee also takes the initiative to familiarize them with the institutional framework, work culture, academic requirements and extracurricular activities of the institution.

## **PROSPECTUS COMMITTEE**

It incorporates the changes in the prospectus every year. It improvises the content of the prospectus under the guidance of respective committee heads.

## **SC/ST COMMITTEE**

A SC/ST Committee is constituted to look in the matter related to SC/ST students. College follows guidelines of social welfare office for admission and follow university guidelines for fees structure for the same.

## **SPORTS AND GYMKHANA COMMITTEE**

The Sports and Gymkhana committee actively motivates students to participate in several levels of sports competitions with complete support of college authorities. The Sports committee conducts coaching/training sessions for the teams before sending them for the competition. The Sports committee also coordinates the activities of the NCC cadets of the College who have enrolled themselves to NCC unit through other College.

## **CULTURAL COMMITTEE**

Cultural Committee of the Institute has been actively grooming students to involve and participate in Intercollegiate festivals and youth festivals of University of Mumbai, over the past many years.

Students are moulded by teachers in an organized manner and trained to participate in every cultural event organised by different colleges. Celebrating cultural festivals in college have become an integral part of the legacy of our College, preparing students for real life and strengthening their personal skills.

# COMMITTEES

These cultural activities not only help students to identify themselves with the college and university, but also assist students to develop themselves in a desired field also improving skills such as organizational, presentation, leadership and interpersonal communication.

As social and cultural activities are of paramount importance, the College has been encouraging all extracurricular activities that are both in line with the educational objectives of the institution and meet the needs of the students. Students actively participate in arts and culture at varying levels of skill and engagement, making them creative, hardworking and dedicated. The Cultural Committee always stands in support of proliferating new talents, impart motivation among students to achieve success.

## **STAFF COMMON ROOM COMMITTEE**

It coordinates with staff to organize all meetings, term end picnics / lunch.

## **STUDENTS' COUNCIL**

The College has an active Student's Council with 15 members from all streams. The Council comprises of the General Secretary (Dr. Kiron Jathar, Vice Principal, Science) heading the Council, the Joint Secretary, assisting the General Secretary, the Treasurer, looking into the monetary aspects of the Council, Cultural secretaries and a Sports secretary.

The Council helps in conducting the various programs of the College.

## **STUDENTS GRIEVANCE CELL**

The College has a Student Grievance (S.G.C) Cell to look into and effectively address the issues and problems brought to it by the Students, Parents, or any other concerned person. The S.G.C comprise the Principal as ex-officio Chairman, Vice- Principal as Chairperson, at least one staff member from Degree College and one from Jr. College as teacher representative, one non-teaching staff and five students consisting, one lady representative and one from SC and ST community.

## **SUBJECT CHANGE COMMITTEE**

It evaluates the subject change matters at FY, SY & TY level. Students have to fill a form provided in the prospectus.

Final evaluation is done on the basis of a screening test provided by the subject teachers in which students have applied for the subject change. Students as well as parents are interacted before granting the subject change. Subject is changes depending on seat availability

## **TIME TABLE COMMITTEE**

It prepares time table and arranges lectures semester wise. It looks in the matters of students request related to time table changes.

## **COLLEGE MAGAZINE**

As a part of the in-house internship for its students, at the end of each semester, the college comes out with a newsletter to encourage the literary talent amongst the students. Student reporters collect information from all departments, editors edit, and compose articles along with the designers who design the magazine and the newsletter. This is a bunch of enthusiastic and skilful students with an eye for detail and a deep sense of commitment, bringing to you the annual college magazine, "Rational National" - A blend of academic and non-academic content, promoting creativity, youth and art of R. D. National College.

## **ADVANCED LEARNING AND REMEDIAL COURSE**

Classrooms are made up of increasingly diverse learners with a wide variety of learning needs. To create classrooms that are appropriately responsive to students' learning needs, the Advanced Learning and Remedial Course Committee has initiated activities through differentiated methods with emphasis on:

- Learning Needs of Academically Advanced Learners
- Learning Needs of Slow Learners and Reluctant

### **Learners Objectives of Advanced Learning:**

- To enhance an advanced learner towards greater academic excellence
- To provide challenging and interesting differentiated learning opportunities
- To enable a learner to learn at an appropriate pace, with significant depth and breadth and in stimulating environments

### **Eligibility Conditions for Advanced Learners:**

- Students enrolled for the academic year 2016-17
- Students with 85% attendance every month will be eligible for extra coaching in various Subjects by the respective teacher
- During class assessments, the learner must attain 75% marks consistently in every Subject to be recognized as Advanced Learners

### **Objectives of Remedial Teaching:**

- To give additional help to pupils who, for one reason or another, have fallen behind the rest of the class in the subjects that fall under a certain department and to bring them back into the mainstream classes as far as possible
- To identify best learning strategies and with the help of the respective teacher to determine how the student will be most supported in the learning environment

### **Eligibility Criteria for Remedial Teaching Program:**

- Students enrolled for the academic year 2016-17
- Students with 85% attendance every month will be eligible for the remedial course in various Subjects

# HOW TO GET???

## **RAILWAY CONCESSION**

1. Bonafide students of the College are eligible for railway concessions for Season Ticket (pass) between the nearest station from their residence as in the admission form to Bandra/Khar. Applications for railway concession form will be accepted between 9:30 AM to 12:30 PM and between 02:30 PM to 04:00 PM in the office on all working days in the prescribed railway concession form.
2. Long journey Railway concessions will be granted to bonafide students during vacations to visit their native place in accordance to the information specified in the admission form only.

## **BEST BUS CONCESSION**

Regular students of F.Y.J.C. and S.Y.J.C. can avail of half fare concession while commuting from home to College and back by BEST buses. This concession is applicable on all working days of the College. The students who wish to avail of this facility must fill in prescribed application form and get it attested by the Principal. This form must then be submitted to the nearest BEST bus depot, which in turn issues an identify card to the eligible students. Production of this Identity Card to the conductor of the bus, enables the student to enjoy half fare concession.

## **BONAFIDE CERTIFICATE**

Students who are admitted to the Junior or Degree College are eligible to get a bonafide certificate on submission of the following:

1. An application on a plain paper
2. A copy of the latest marksheet
3. A copy of ID Card
4. Fee of Rs.20/- for Degree College or Rs. 25/- for Junior College

The Bonafide Certificate will be issued within 3 working days following the submission of application and payment of fees.

## **TRANSFER CERTIFICATE**

The rules for issuing Transfer Certificate are as per the ordinance given below:

**0.131** If, as a result of a student leaving one college to join another, it will be necessary for him to count the attendance kept by him in more than one college to

enable him to make up the necessary number of attendance, a Transfer certificate shall not be granted except for reasons which appear to the executive council to be sufficient and except with the written permission of the Principal of the college which he intends to join. Provided , however, that in the event of a student leaving one college to join another after the completion of a term, or terms, it will be necessary for him to obtain the written permission from the Principal of the college which he desires to leave and the Principal of the college which he intends to join.

**0.132** Student shall make application of Transfer Certificate without unnecessary delay through the Principal of the college to which they wish to be transferred.

The application fees for Transfer Certificate is Rs.100/-. The Transfer Certificate will be sent directly to the College through which the application is made following the submission of application and payment of fees.

## **TRANSCRIPT**

Students seeking Transcripts should submit the following:

1. An application on a plain paper
2. Copies of all marksheets
3. Fees of Rs.1000/- for the first 5 copies and Rs. 50/- for each copy thereafter.

The Transcripts will be issued after verification of documents within 7 working days following the submission of application and payment of fees.

## **RECOMMENDATION LETTER**

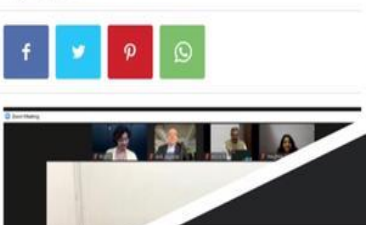
Student applying for post graduate courses to Indian or Foreign Universities may apply for a Recommendation Letter as follows:

1. An application on a plain paper giving the purpose for which the recommendation letter is sought and other personal and academic details and the name of faculty from whom such a letter is sought.
2. Fee of Rs.100/- for per copy of the Recommendation Letter.

The Principal on scrutiny of the application will issue relevant instructions to the office to do the needful. The recommendation letter will be issued within 7 working days thereafter.

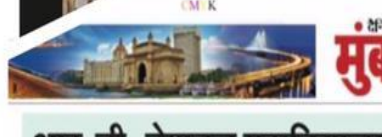


A virtual convocation ceremony was organized R.D and S.H National College for the graduates 2019 2020 ,Amid Pandem



Mumbai Mirror article titled 'Bandra college gets top marks for Covid-related initiatives'. The article discusses the college's virtual lab, online classes, and community service projects during the pandemic.

News snippets from 'हलचल' (Halchal) section, including reports on HSNC board members and a lockdown case.



आर. डी. नेशनल महाविद्यालय एवं एक्वाक्रॉफ्ट द्वारा अद्वितीय कोर्स 'स्वच्छ' का शुभारंभ

Advertisement for the 'Swachh' course launch, featuring a poster with the text 'LAUNCH OF SWACHH COURSE' and details about the inauguration ceremony.

समाचार विशेष मुंबई, सितंबर, 6 वॉर 2021

Advertisement for a seminar titled 'मुख्य न्यायाधीश श्री एच. के. वेनानी के सम्मान में विजित मार्ग-नामकरण कार्यक्रम का भव्यतापूर्ण समारोह'.



Advertisement for the 'LAUNCH OF SWACHH COURSE' by R.D. and S.H. National College and S.W.A. Science College, featuring a woman in a pink saree.

महाराष्ट्र शासन  
सक्षम प्राधिकारी तथा प्रधान सचिव  
अल्पसंख्याक विकास विभाग,  
मंत्रालय, मुंबई - ४०० ०३२.

क्रमांक:असंस-२००८/१५२/(९८)/५.क्र.३५९/२००८/का.५, दिनांक - ४ फेब्रुवारी, २०१०.

अल्पसंख्याक दर्जाच्या मान्यतेचे प्रमाणपत्र

हैदराबाद (सिंध) नॅशनल कॉलेजिएट बोर्ड, के.सी. कॉलेज बिल्डिंग, दिन्शा वाच्छा रोड, चर्चगेट, मुंबई या शैक्षणिक संस्थेने त्यांच्या संस्थेस भाषिक अल्पसंख्याक शैक्षणिक संस्था म्हणून दर्जाच्या मान्यतेचे प्रमाणपत्र दिवण्यासाठी दि.११.०७.२००७ रोजी सादर केलेल्या अर्जास अनुसरून तत्कालीन सक्षम प्राधिकारी तथा प्रधान सचिव व विशेष चीफशी अधिकारी-२, सामान्य प्रशासन विभाग यानी संबंधित संस्थेच्या पदाधिकार्यांसोबत झालेल्या सुनावणीअंती दिनांक १२ नोव्हेंबर, २००७ रोजी सदा संस्थेस शानन निर्णय, सामान्य प्रशासन विभाग, क्रमांक:असंस-२००६/६३४/प्र.क्र.६३/२००६/३५, दि.११ जून, २००७ अन्वये विहित केलेल्या तरतुदीनुसार शैक्षणिक वर्ष २००७-०८ पासून पुढील तीन वर्षाकरिता भाषिक (सिंधी) अल्पसंख्याक दर्जा प्रदान केला होता.

शासन निर्णय, अल्पसंख्याक विकास विभाग, क्रमांक:अशास-२००८/प्र.क्र.१३३/२००८/का.५, दि.४ जुलै, २००८ च्या परिच्छेद (१०) मध्ये विहित तरतुदीनुसार सदा संस्थेने सादर केलेल्या दिनांक २१.११.२००९ च्या अर्जास हैदराबाद (सिंध) नॅशनल कॉलेजिएट बोर्ड, मुंबई या शैक्षणिक संस्थेस याद्वारे भाषिक (सिंधी) अल्पसंख्याक शैक्षणिक संस्था म्हणून घोषित करण्यात येत आहे.

हे प्रमाणपत्र केवळ महाराष्ट्र राज्यापुरते लागू असेल. सदा संस्थेस प्रदान करण्यात आलेला भाषिक अल्पसंख्याक दर्जा हा संस्था संचालित करत असलेल्या सर्व शैक्षणिक शाखांना लागू राहिल.

उपरोल्लेखित शैक्षणिक संस्थेस याद्वारे प्रदान करण्यात आलेला भाषिक अल्पसंख्याक दर्जा हा शैक्षणिक वर्ष २००९-१० पासून विधिग्राह्य असेल. संबंधित संस्थेने अल्पसंख्याक विकास विभाग, शासन निर्णय, अ.असंस-२००८/प्र.क्र.१३३/२००८/का.५, दि.४ जुलै, २००८ अन्वये विहित करण्यात आलेल्या निकष व अटीची सातत्याने व विनिर्देशपूर्वक पूर्तता करणे बंधनकारक राहिल.



टी. एम. धेकेकरा

( टी. एम. धेकेकरा )

सक्षम प्राधिकारी तथा प्रधान सचिव,  
अल्पसंख्याक विकास विभाग, महाराष्ट्र शासन,  
मंत्रालय, मुंबई - ४०० ०३२.

# HYDERABAD (SIND) NATIONAL COLLEGIATE BOARD, MUMBAI

**Mr. Kishu Mansukhani**  
*President*

**Dr. Niranjan Hiranandani**  
*Former President & Trustee*

**Shri Anil Harish**  
*Former President & Trustee*

**Ms. Maya Shahani**  
*Trustee*

**Mr. Lal Chellaram**  
*Trustee*

**Shri Dinesh Panjwani**  
*Secretary*

## Institutions Managed by the Board

1. **Rishi Dayaram and Seth Hasaram National College & Seth Wassiamull, Assomull Science College,** 1949  
Bandra, Mumbai 400 050.
2. **Kishinchand Chellaram College,** 1954  
Churchgate, Mumbai 400 020.
3. **Kishinchand Chellaram Law College,** 1955  
Churchgate, Mumbai 400 020.
4. **Hassaram Rijhumal College of Commerce & Economics,** 1960  
Churchgate, Mumbai 400 020.
5. **Smt. Mithibai Motiram Kundnani College of Commerce & Economics,** 1961  
Bandra, Mumbai 400 050.
6. **Smt. Chandibai Himathmal Mansukhani College,** 1965  
Ulhasnagar, Dist. Thane 421 003.
7. **Bombay Teachers' Training College,** 1969  
Colaba, Mumbai 400 039.
8. **Principal K. M. Kundnani College of Pharmacy,** 1971  
Cuffe parade, Mumbai 400 005.
9. **Gopaldas Jhamatmal Advani Law College,** 1977  
Bandra, Mumbai 400 050.
10. **Watumull Institute of Electronic Engineering Computer Technology and Electronic Instrumentation** 1981  
Ulhasnagar – 3
11. **Thadomal Shahani Engineering College,** 1983  
Bandra, Mumbai 400 050.
12. **Dr. L. H. Hiranandani College of Pharmacy,** 2004  
Ulhasnagar – 3
13. **Nari Gurasahani Law College,** 2005  
Ulhasnagar – 3
14. **Shri. H. & G. H. Mansukhani College of Management,** 2004  
Ulhasnagar – 3
15. **K. C. College of Management Studies Churchgate,** 1969  
Mumbai 400 020.
16. **Principal K. M. Kundnani College of Pharmacy Polytechnic,** 1971  
Ulhasnagar 421 003.

# A SNEAK PEAK INTO ACADEMIC YEAR 2020-21



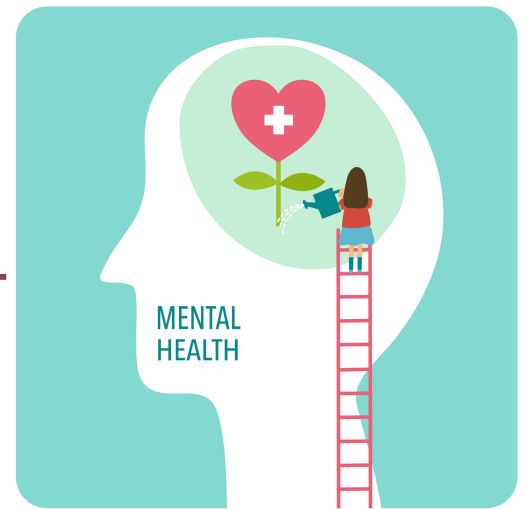
**MARCH 2020,**



**Launch of Vidyasagar  
Principal Kundnani  
Innovation and  
Entrepreneurship  
Centre (VPKIEC)**

**APRIL 2020,**

**"You don't have to struggle  
in Silence" - Helpline for  
Mental Health was launched  
to help deal with anxiety and  
mental health during the  
pandemic.**



**Assistance to the Adopted  
Village - "Continuing  
Education Through Digital  
Means at Adopted Village of  
Pansai" was envisioned by  
the Nationalite's NSS wing.**

**MAY 2020,**



**Promotion of Khadi masks to serve the Community - KHADI KAVACH, India's 1st Khadi Face Mask, fully aligned with Hon'ble Prime Ministers vision of Atmanirbhar Bharat and Vocal for Local.**

**Principal Dr Neha Jagtiani invited at Radio City 91.1 live on their very popular show 'Kasa Kai Mumbai ' with RJ Salil and RJ Archana.**



**JUNE 2020,**



**NSS Unit of Mumbai University and R.D National College expresses their heartfelt gratitude towards the BMC workers by designing and distributing face masks for the BMC workers of the ward.**

**JULY 2020,**



**SWACHH is India's 1st Covid response & resilience-building skill development & vocational course. The course aims to empower incumbent Water & Sanitation, Community health & hygiene which are critical factors in Pandemic control.**

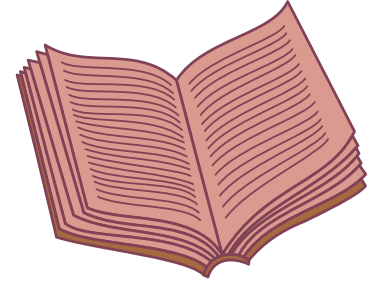
**AUGUST 2020,**

**Freedom in the Mind, Faith in the Words and Pride in our Souls. Saluting the Nation on the 74th Independence Day.**



**Principal, Dr. Neha Jagtiani received Sindhi Chamber of Commerce Covid-19 Game Changer Award**

SEPTEMBER 2020,



**HSNC Board & R.D & S.H. National**  
in association with  
**The Shahani Group**  
presents  
**CALLING THE CURIOUS** with  
*Placement Opportunities During COVID*


Organized by.....



Mr. Kishu Mansukhani  
Trustee, HSNCB



Dr. Neha Jagtap  
I/C Principal  
R.D & S.H. National



Dr. Niranjana Hiranandani  
Trustee, HSNCB

Calling the curious -  
A placement drive

Food Donation Drive organised by R. D. National College in collaboration with Bhamla Foundation witnessed the presence of well-known playback Singer Shaan. The staff and students of the college arranged and distributed ration kits to slum dwellers in the areas around the college.

OCTOBER 2020,



**R.D. & S.H. NATIONAL COLLEGE**  
Bandra (W), Mumbai - 400050

**National Service Scheme Unit**

**BECOME A WARRIOR AGAINST COVID-19 DONATE BLOOD**

**BLOOD DONATION CAMP**

In Association with **29th Oct. 2020**

**AmbaGopal FOUNDATION**

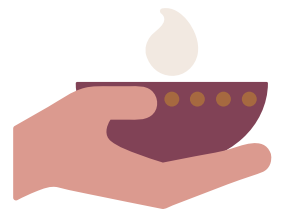
**YOUR SOCIETY NEEDS YOU**

Venue :  
College Gymkhana (Badminton Court)

Time : 10.00 am to 2.30 pm

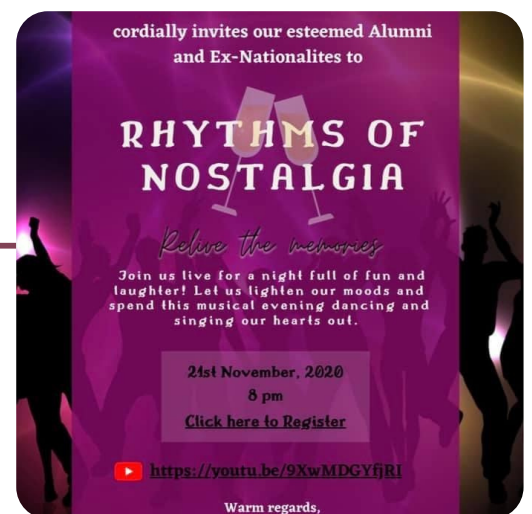
NSS Unit of R. D. National College in association with Amba Gopal Foundation organised Blood Donation Camp.

## NOVEMBER 2020,



Diwali get-together for Support Staff organised by R. D National College with some singing, dancing and lots of fun with many cheers.

Cordially invited our esteemed Alumni and Ex-Nationalites to Rhythms of Nostalgia, a night full of dance and music filled with joy and laughter



## DECEMBER 2020,



Principal nominated as advisor to New Education Policy

Jashan 2020 - The Grandeur of Sindhi Culture was organized virtually in association with Sindhi Chamber of Commerce to celebrate the Sindhiyat in us.





**JANUARY 2021,**



With patriotism in our hearts and culture in our mind, the difficult times in the world couldn't stop us from celebrating the 72nd Republic Day of India.

**FEBRUARY 2021,**

**Cutting Chai 2021, A BMM Initiative.**



**MARCH 2021,**



**Workshop on Cyber Suraksha**

**Literary Program for Development & Popularization of Sindhi Literature**



**Psychomagicum 2021- Initiative of Department of Psychology**

**SynTech-X 2021 - Fest of Computer Science Department**



APRIL 2021,



## The Book Launch - Pedagogical Approaches in Commerce

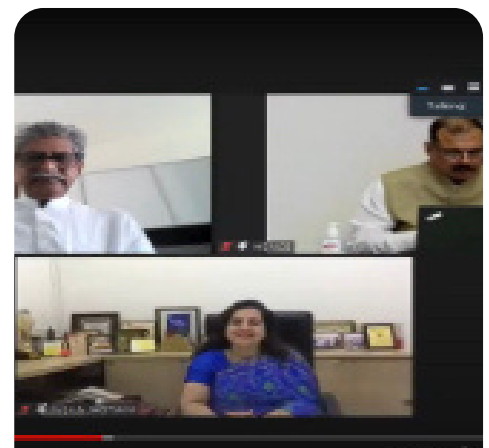
Education Conclave - Connect to Careers. The Virtual Conclave was a great source of inspiration and motivation for the students as it saw many Industry Stalwarts.



Meterdown 2021, A BMS & BAF Fest.

MAY 2021, 

The Convocation Ceremony for the Batch 2019-2020 was a virtual celebration of the success and perseverance of the final year students.





**Exemplary art made by Mr. Sahdev Sawant,  
Lab Assistant, Botany Department, RDNC  
lauding the efforts of the true Corona  
Warriors.**